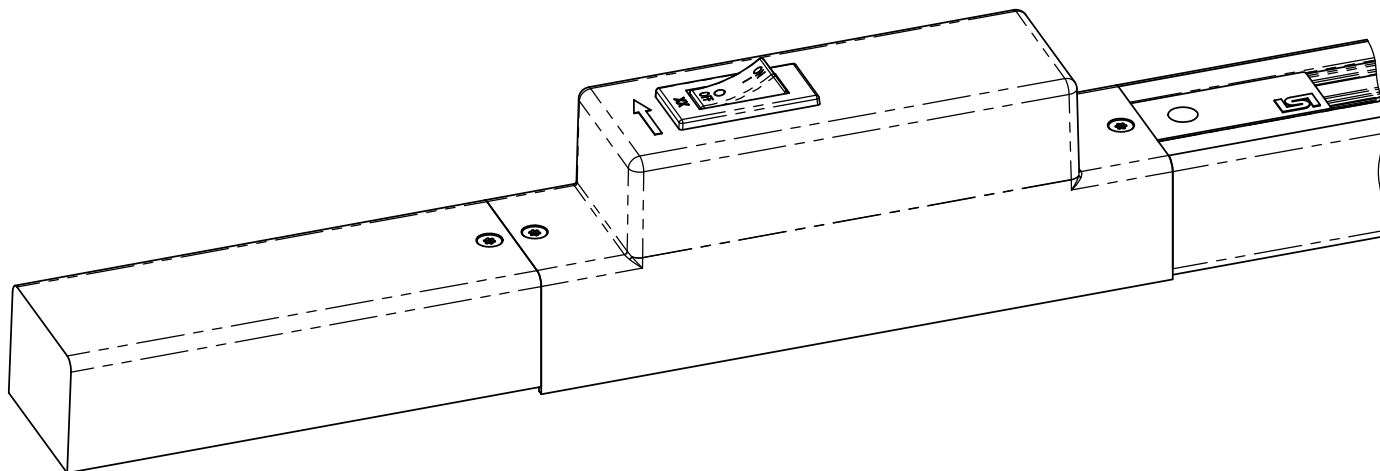


INSTALLATION INSTRUCTIONS

LSI TRACK CURRENT LIMITER



TO PREVENT RISK OF SHOCK, TURN OFF ELECTRICITY PROPER TO INSTALLATION OR MAINTENANCE

IMPORTANT SAFETY INSTRUCTIONS

WHEN INSTALLING OR USING THIS TRACK SYSTEM, BASIC SAFETY PRECAUTIONS SHOULD ALWAYS BE FOLLOWED, INCLUDING THE FOLLOWING:

- READ ALL INSTRUCTIONS.
- FOR USE WITH 120V TRACK SYSTEM ONLY
- DO NOT INSTALL IN DAMP OR WET LOCATIONS.
- DO NOT INSTALL ANY PART OF THE TRACK SYSTEM LESS THAN FIVE FEET FROM FLOOR.
- DO NOT INSTALL ANY FIXTURE ASSEMBLY CLOSER THAN SIX INCHES FROM ANY CURTAIN OR SIMILAR COMBUSTIBLE MATERIAL.
- CHECK WITH A QUALIFIED ELECTRICIAN.
- DO NOT ATTEMPT TO ENERGIZE ANYTHING OTHER THAN LIGHTING FIXTURES ON THE TRACK.
- DO NOT ATTEMPT TO CONNECT POWER TOOLS, EXTENSION CORDS, APPLIANCES AND THE LIKE TO THE TRACK.
- MOUNTING LOCATIONS SHALL NOT EXCEED 6 FEET ON CENTER.

SAVE THESE INSTRUCTIONS

CONFIDENTIAL-PROPRIETARY INFORMATION - THE INFORMATION HEREIN IS PROTECTED UNDER COPYRIGHT AND IS OF A PROPRIETARY NATURE AND IS SUBMITTED IN CONFIDENCE FOR USE BY OUR CLIENTS ONLY. UNAUTHORIZED REPRODUCTION, PUBLICATION, DISTRIBUTION OR DISSEMINATION IN WHOLE OR PART, IS EXPRESSLY PROHIBITED. THE INFORMATION CONTAINED HEREIN IS AND REMAINS THE PROPERTY OF LIGHTING SERVICES INC. AND RECEIPT OR POSSESSION OF THIS INFORMATION CONFERS NO RIGHT IN OR LICENSE TO DISCLOSE TO OTHERS THE SUBJECT MATTER CONTAINED HEREIN FOR ANY BUT AUTHORIZED PURPOSES. COPYRIGHT LIGHTING SERVICES INC. ALL RIGHTS RESERVED



LIGHTING SERVICES INC 2 HOLT DRIVE STONY POINT, NY 10980-1996 TEL: 845-942-2800 www.LightingServicesInc.com

INSTALLATION INSTRUCTIONS

LSI TRACK CURRENT LIMITER

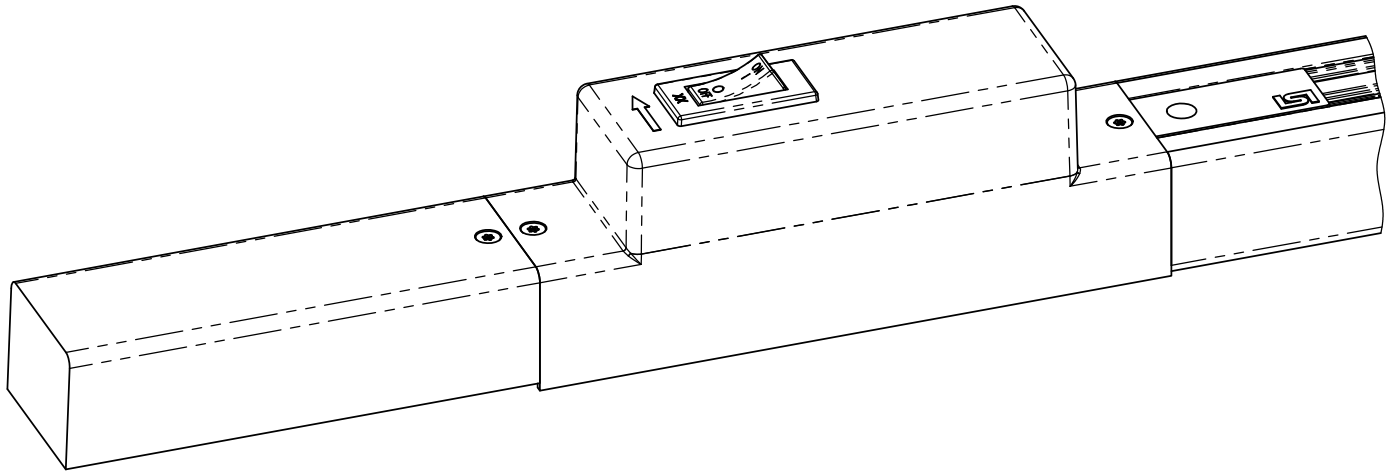


TABLE OF CONTENTS:

PAGE 3. CANOPY KIT FOR END FEED

PAGE 4. SURFACE HANGER CLIP KIT

PAGE 5. CANOPY KIT FOR USE WITH SURFACE HANGER CLIPS

PAGE 6. CANOPY FEED STEM KIT (RIGID AND HANG STRAIGHT)

PAGE 7 & 8. STAINLESS STEEL CABLE SUPPORT KIT

PAGE 9. FEED KIT FOR STAINLESS STEEL CABLE SUPPORT KIT

PAGE 10. UNITRACK & GEMINI HOUSING MOUNTING

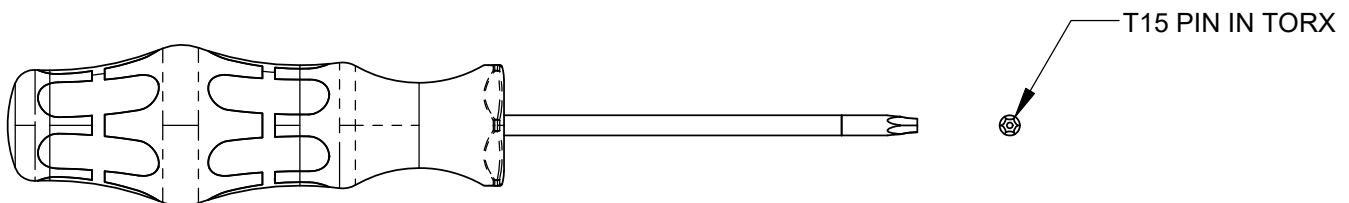
PAGE 11 & 12. CONTINUOUS LENGTHS (STRAIGHT MINI-JOINER & STRAIGHT JOINER / FEEDER OPTIONS)

PAGE 13. TRACK CURRENT LIMITER WIRING

**** ALL MOUNTING OPTIONS SHOWN IN THIS INSTALLATION INSTRUCTION ARE ORDERED SEPARATELY ****

SPECIAL TOOLS NEEDED FOR INSTALLATION

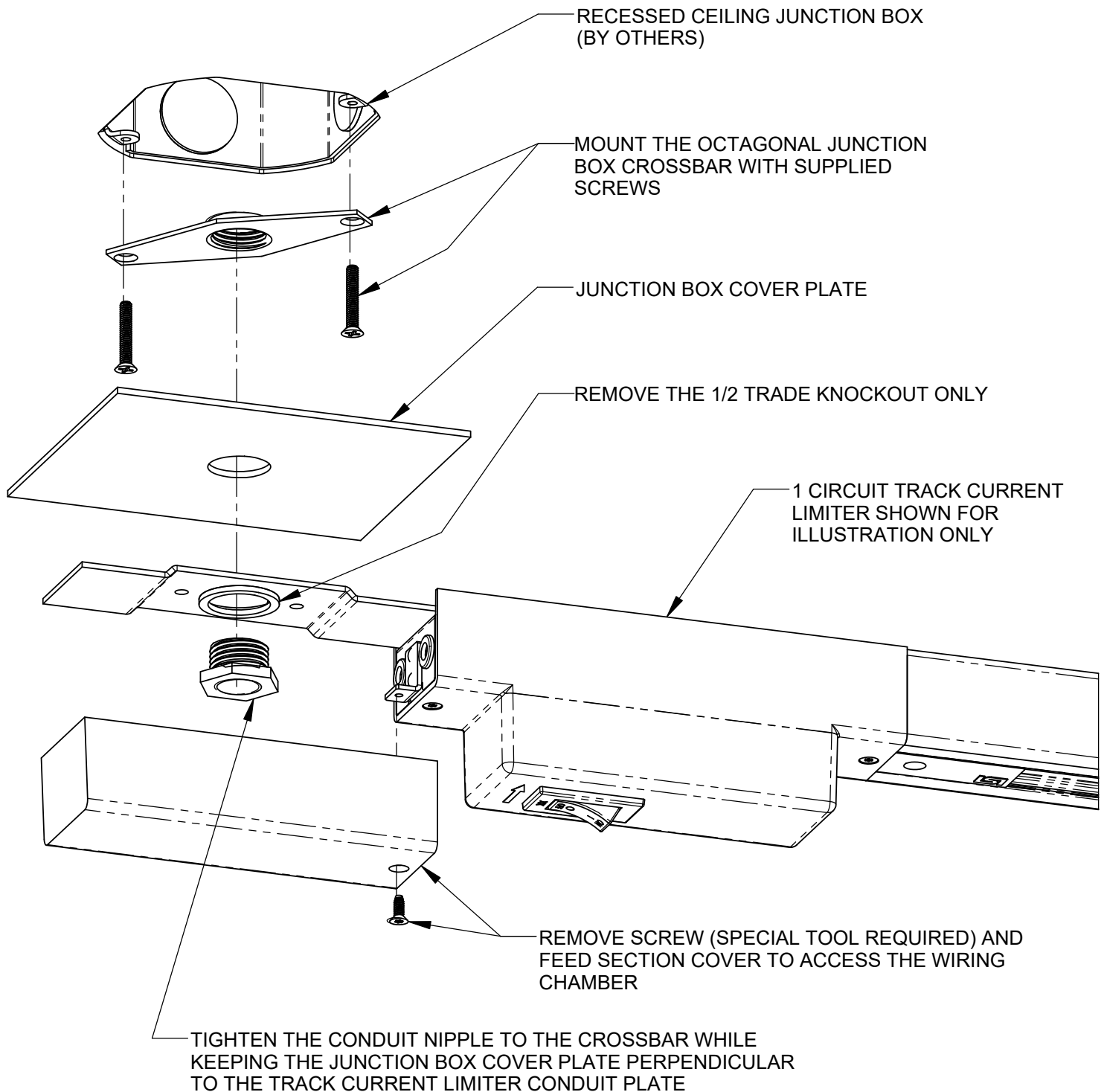
FOR REMOVAL OF END FEED COVER TO ACCESS SPLICING COMPARTMENT



INSTALLATION INSTRUCTIONS

LSI TRACK CURRENT LIMITER

CANOPY KIT FOR END FEED



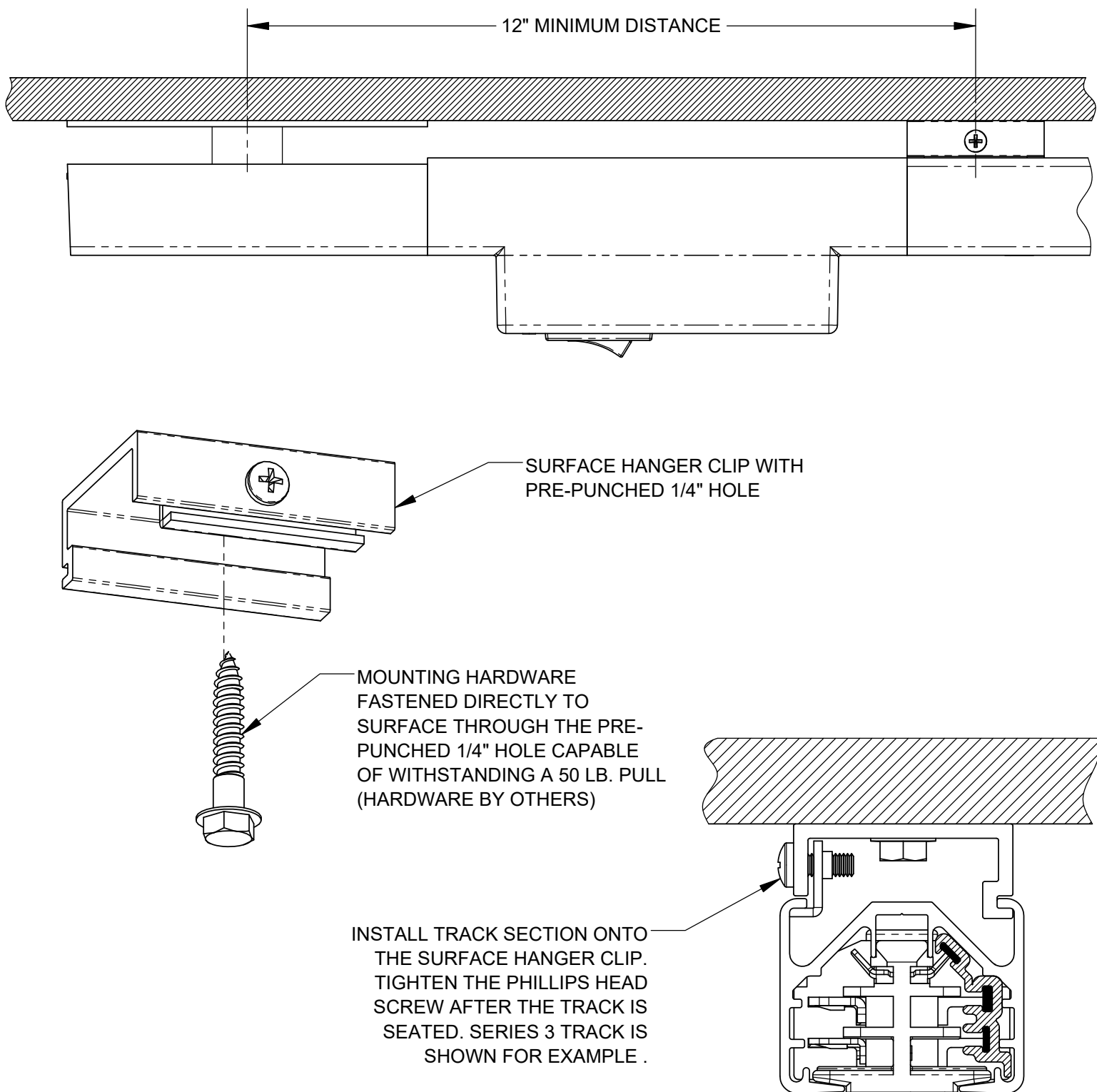
NOTES:

1. REMOVE THE SCREW (SPECIAL TOOL REQUIRED) AND FEED SECTION COVER TO ACCESS THE WIRING CHAMBER. MOVE WIRES OUT OF THE WAY SO THEY DO NOT BECOME PINCHED DURING INSTALLATION.
2. SEE PAGE 12 FOR WIRING INSTRUCTIONS.

INSTALLATION INSTRUCTIONS

LSI TRACK CURRENT LIMITER

SURFACE HANGER CLIP KIT

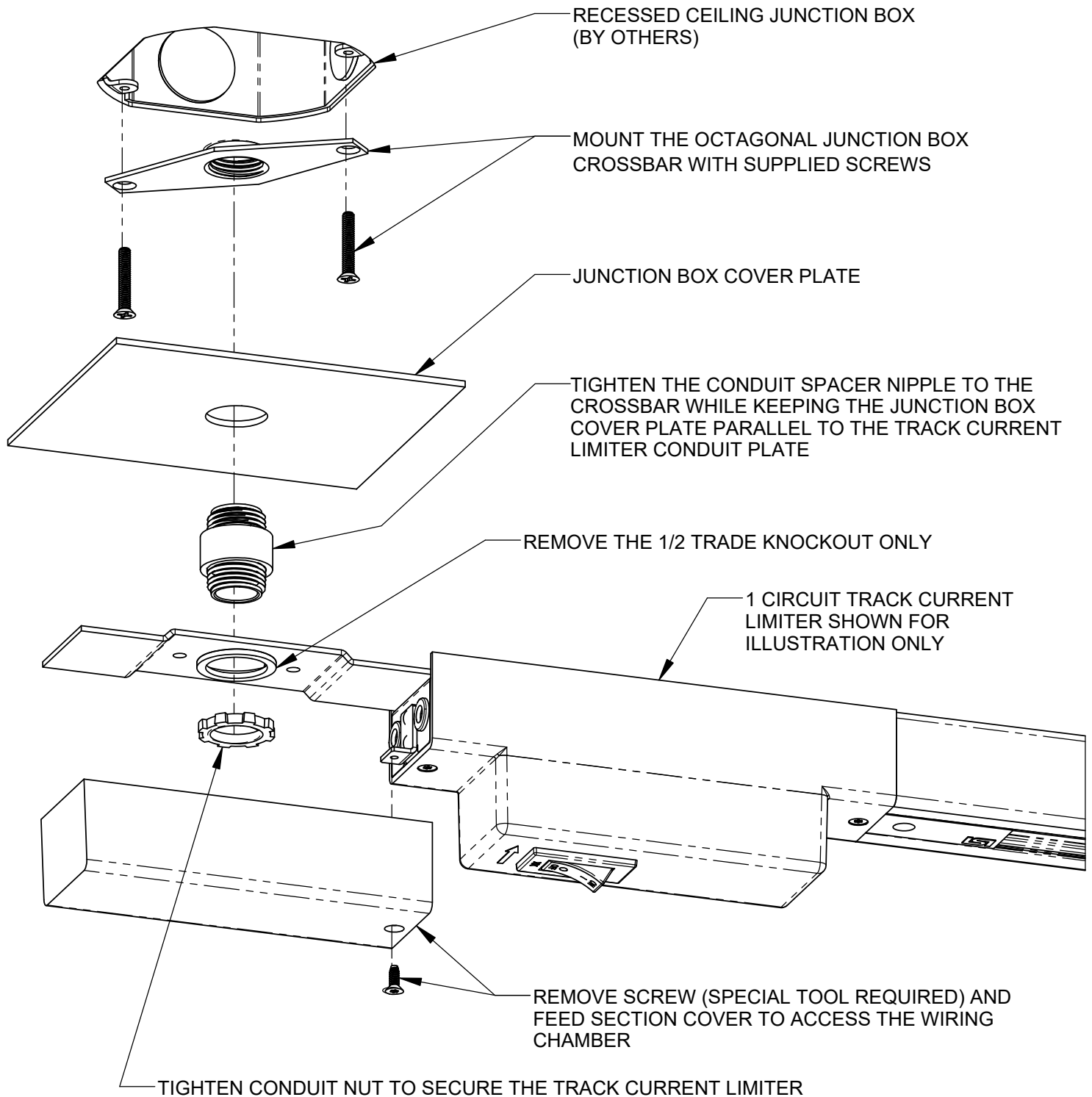


- NOTES:
1. LSI RECOMMENDS (2) HANGER CLIPS PER 4 FOOT LENGTH, (2) HANGER CLIPS PER 8 FOOT LENGTH AND (3) HANGER CLIPS PER 12 FOOT LENGTH.

INSTALLATION INSTRUCTIONS

LSI TRACK CURRENT LIMITER

CANOPY KIT FOR USE WITH SURFACE HANGER CLIPS



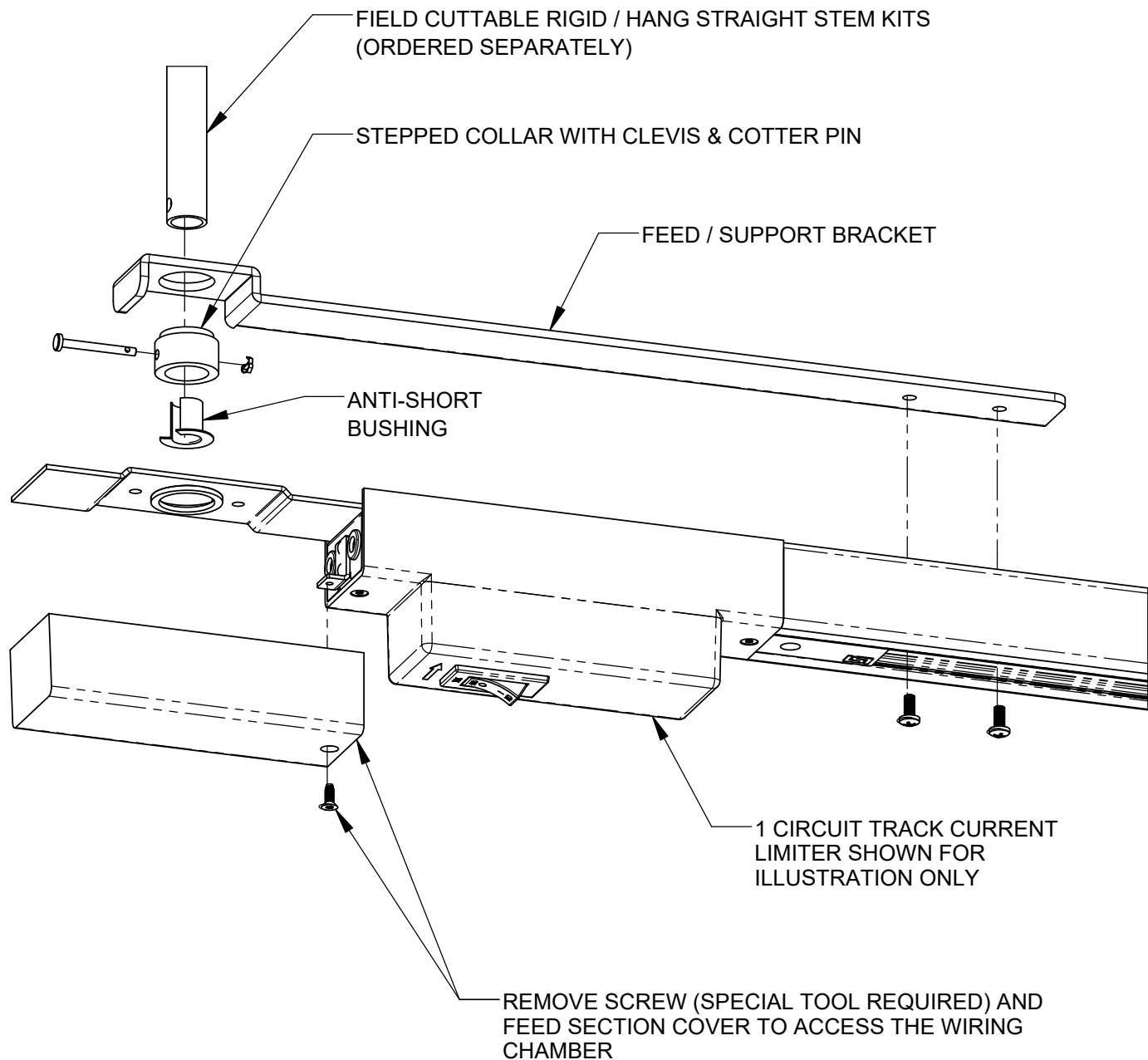
NOTES:

1. REMOVE THE SCREW (SPECIAL TOOL REQUIRED) AND FEED SECTION COVER TO ACCESS THE WIRING CHAMBER. MOVE WIRES OUT OF THE WAY SO THEY DO NOT BECOME PINCHED DURING INSTALLATION.
2. SEE PAGE 12 FOR WIRING INSTRUCTIONS.

INSTALLATION INSTRUCTIONS

LSI TRACK CURRENT LIMITER

CANOPY FEED STEM KIT (RIGID AND HANG STRAIGHT)



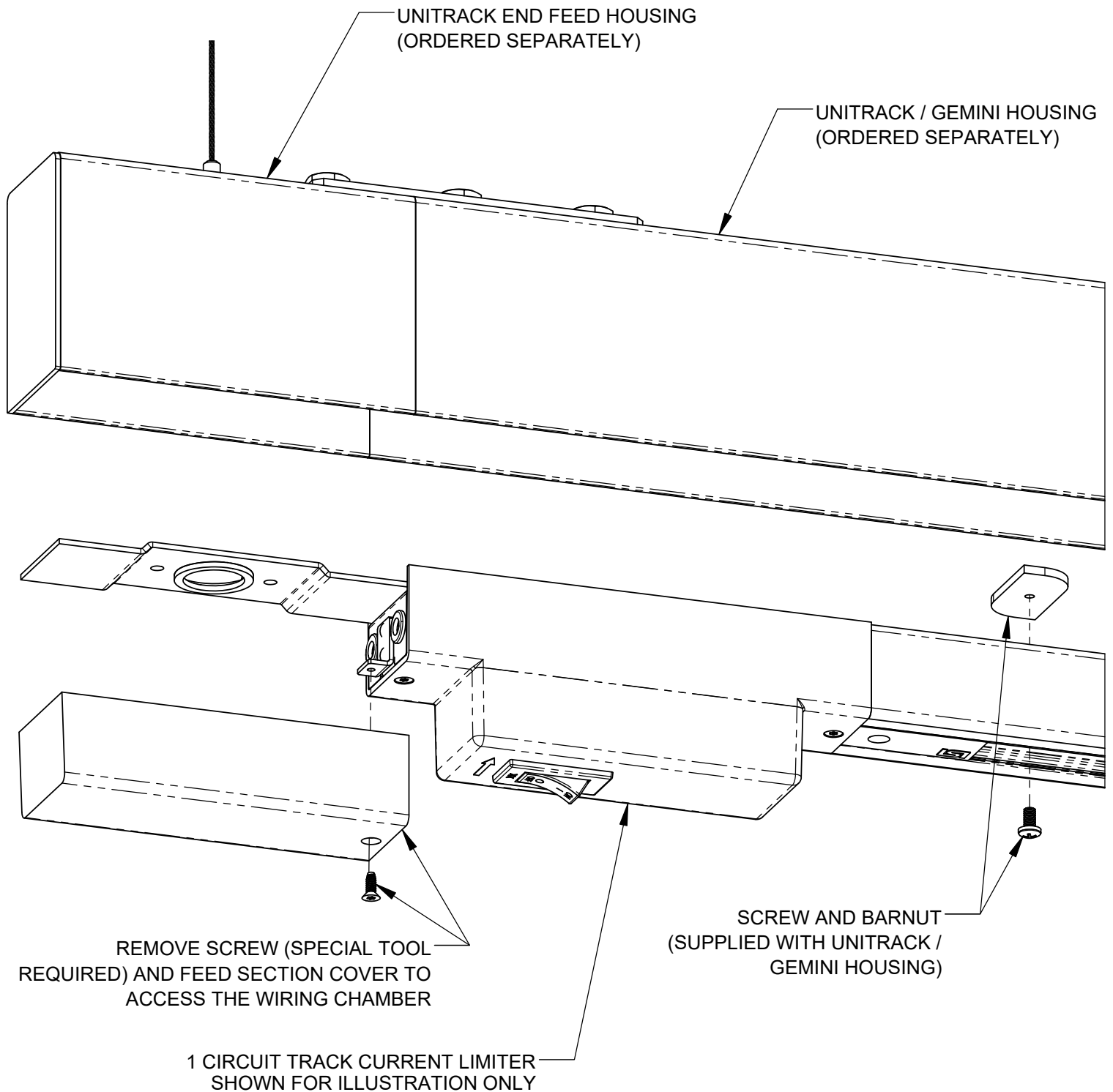
NOTE:

1. REMOVE THE SCREW (SPECIAL TOOL REQUIRED) AND FEED SECTION COVER TO ACCESS THE WIRING CHAMBER. MOVE WIRES OUT OF THE WAY SO THEY DO NOT BECOME PINCHED DURING INSTALLATION.
2. USING THE FEED / SUPPORT BRACKET AS A GUIDE, MARK HOLE LOCATIONS ON THE TRACK SECTION.
3. DRILL (2) 3/16" DIAMETER CLEARANCE HOLES IN THE TRACK SECTION. DO NOT USE THE FEED / SUPPORT BRACKET AS A GUIDE FOR DRILLING.
4. USE THE #8-32 SCREWS (SUPPLIED) AND ASSEMBLE.
5. SEE PAGE 12 FOR WIRING INSTRUCTIONS.

INSTALLATION INSTRUCTIONS

LSI TRACK CURRENT LIMITER

UNITRACK AND GEMINI HOUSING MOUNTING



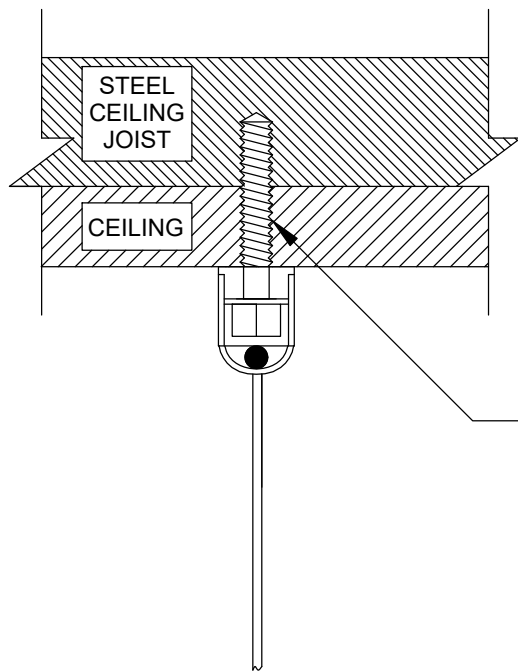
NOTES:

1. REMOVE THE SCREW (SPECIAL TOOL REQUIRED) AND FEED SECTION COVER TO ACCESS THE WIRING CHAMBER. MOVE WIRES OUT OF THE WAY SO THEY DO NOT BECOME PINCHED DURING INSTALLATION.
2. SEE PAGE 12 FOR WIRING INSTRUCTIONS.
3. ALL UNITRACK HOUSING COMPONENTS ARE ORDERED SEPARATELY.

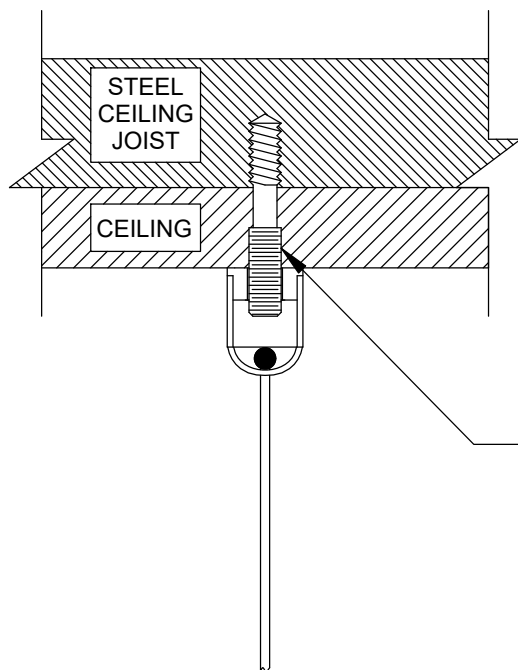
INSTALLATION INSTRUCTIONS

LSI TRACK CURRENT LIMITER

STAINLESS STEEL CABLE SUPPORT KIT



OPTION 1:
STEEL SCREW CAN BE INSERTED INTO MOUNT
AND UP INTO STEEL CEILING JOIST OR OTHER
MOUNTING MATERIAL SUITABLE FOR STEEL OR
STEEL SCREW MOUNTING (BY OTHERS)



OPTION 2:
MOUNT CAN BE SCREWED ON USING THE REAR
THREADED SECTION AFFIXED TO A STEEL STUD
CAPABLE OF WITHSTANDING A 50LB. PULL
(BY OTHERS)

NOTES:

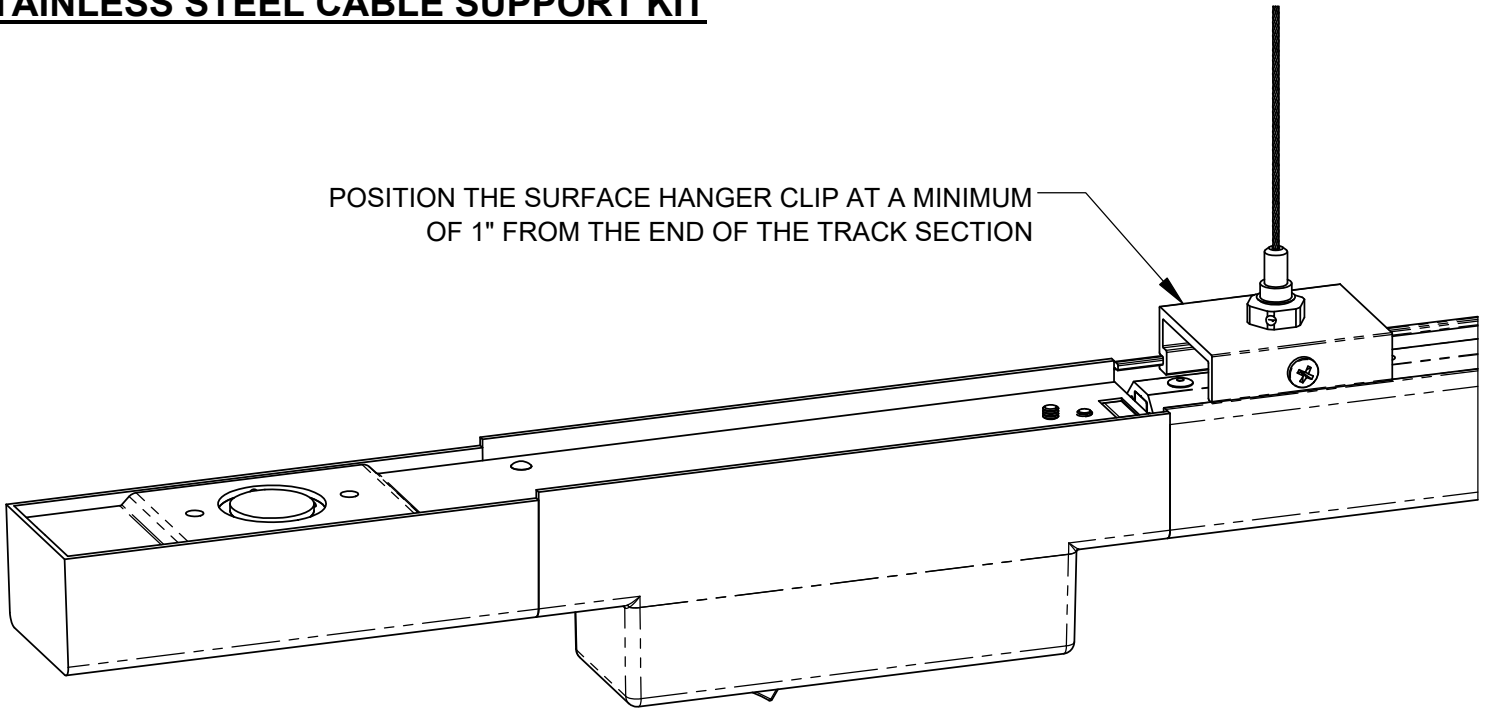
1. TRACK MUST BE INSTALLED AT A MINIMUM OF 8 FEET ABOVE THE FLOOR.

INSTALLATION INSTRUCTIONS

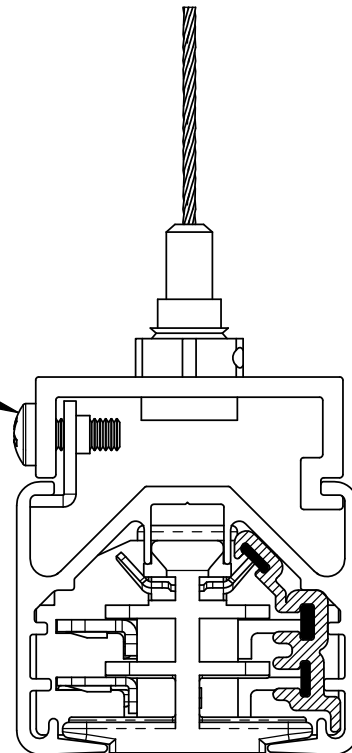
LSI TRACK CURRENT LIMITER

STAINLESS STEEL CABLE SUPPORT KIT

POSITION THE SURFACE HANGER CLIP AT A MINIMUM OF 1" FROM THE END OF THE TRACK SECTION



INSTALL TRACK SECTION ONTO THE SURFACE HANGER CLIP. TIGHTEN THE PHILLIPS SCREW AFTER THE TRACK IS SEATED.



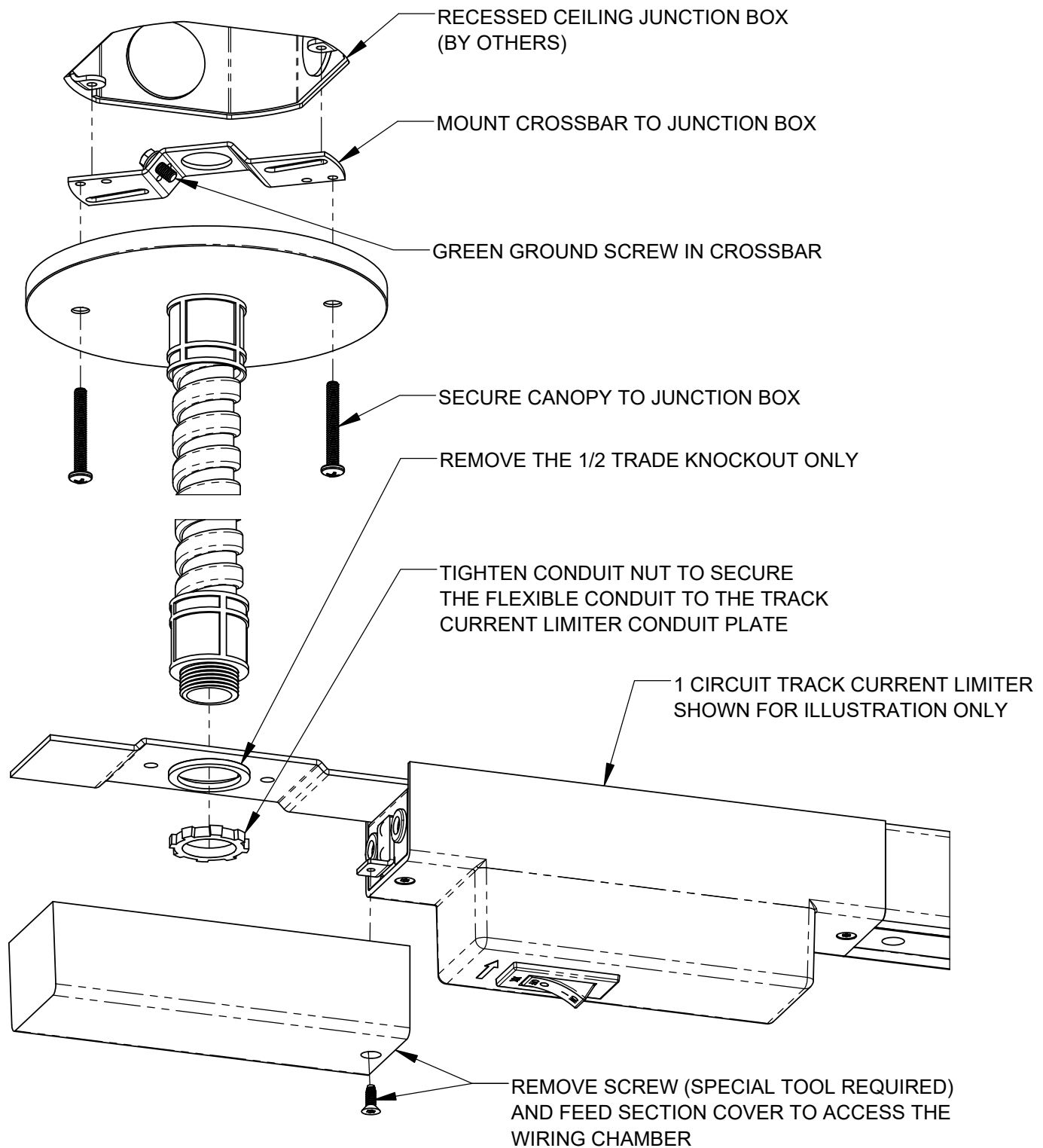
NOTES:

1. LSI RECOMMENDS (2) HANGER CLIPS PER 4 FOOT LENGTH, (2) HANGER CLIPS PER 8 FOOT LENGTH AND (3) HANGER CLIPS PER 12 FOOT LENGTH.

INSTALLATION INSTRUCTIONS

LSI TRACK CURRENT LIMITER

FEED KIT FOR STAINLESS STEEL CABLE



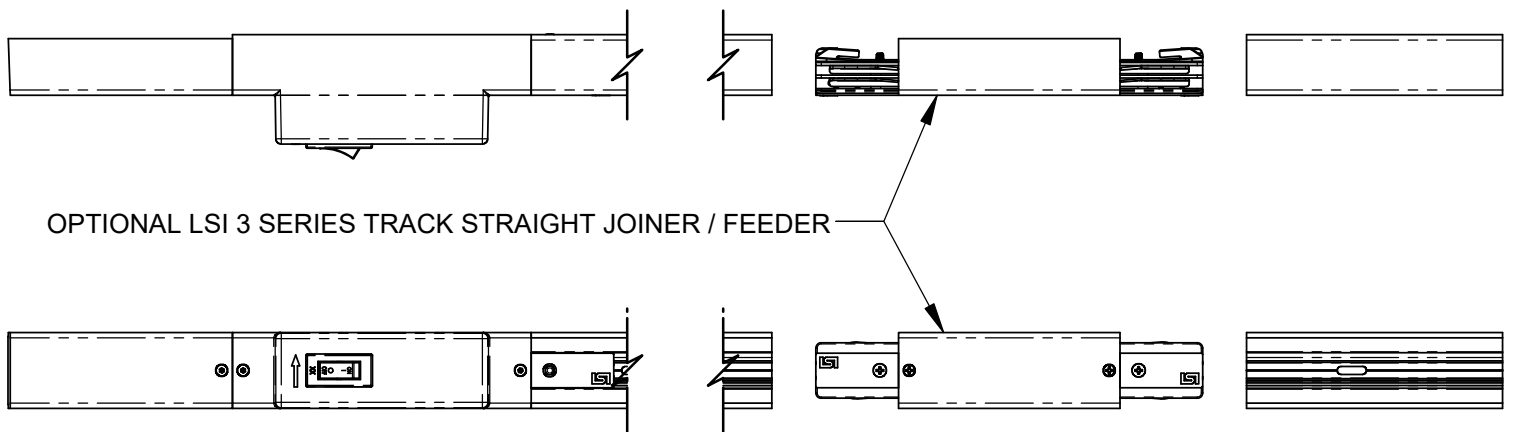
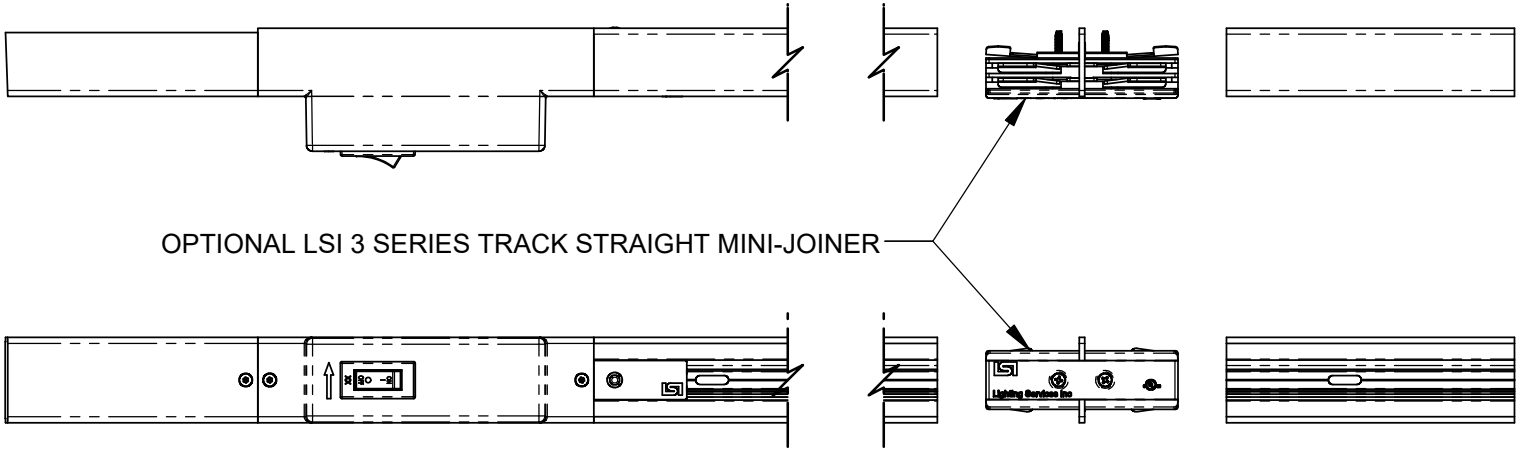
NOTES:

1. REMOVE THE SCREW (SPECIAL TOOL REQUIRED) AND FEED SECTION COVER TO ACCESS THE WIRING CHAMBER. MOVE WIRES OUT OF THE WAY SO THEY DO NOT BECOME PINCHED DURING INSTALLATION.
2. SEE PAGE 12 FOR WIRING INSTRUCTIONS.
3. FLEXIBLE CONDUIT IS FIELD CUTTABLE WITH A SHARP HACKSAW OR A CHOP SAW WITH A NON-FERROUS BLADE.

INSTALLATION INSTRUCTIONS

LSI TRACK CURRENT LIMITER

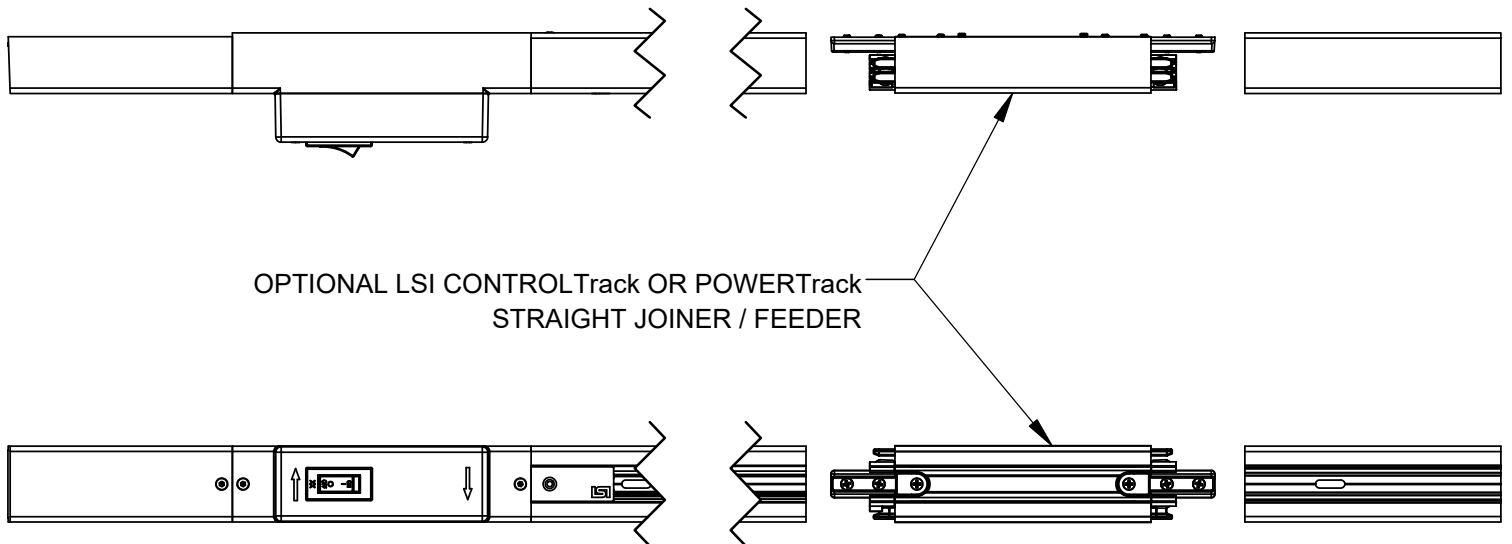
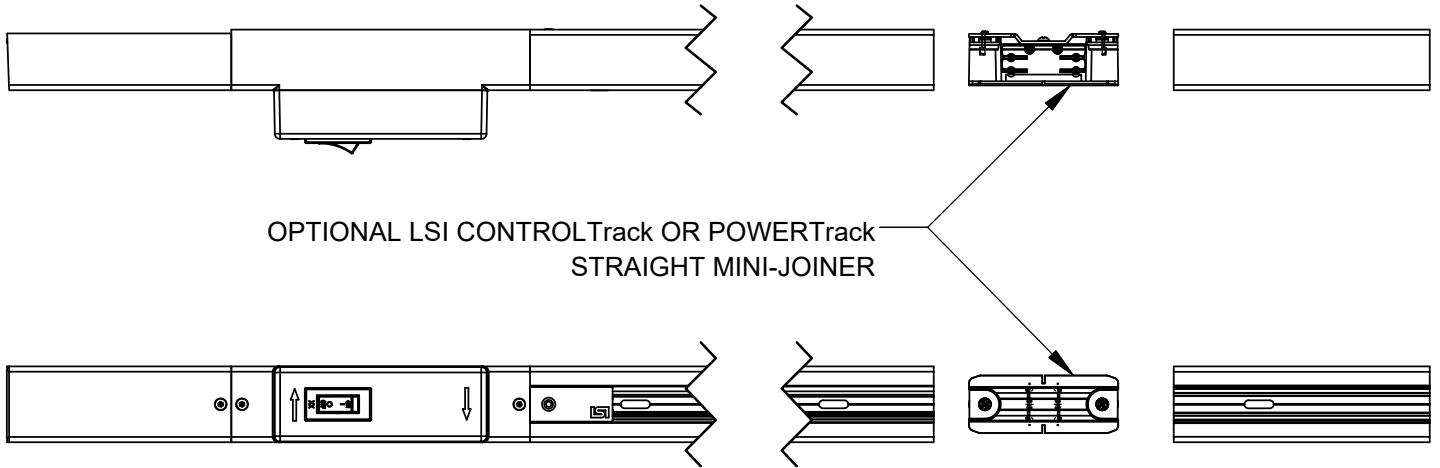
CONTINUOUS LENGTHS (STRAIGHT MINI-JOINER & STRAIGHT JOINER / FEEDER OPTIONS)



INSTALLATION INSTRUCTIONS

LSI TRACK CURRENT LIMITER

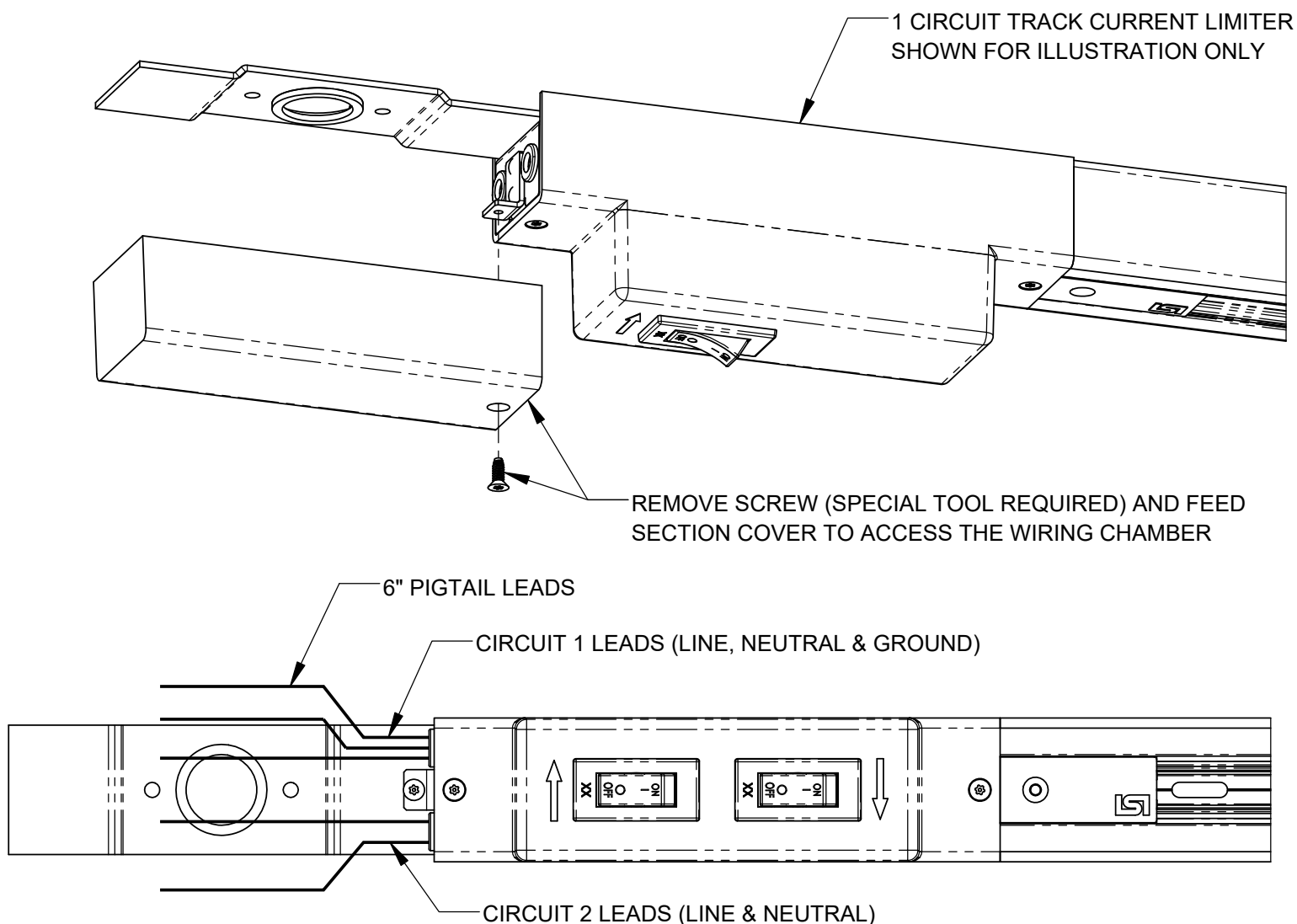
CONTINUOUS LENGTHS (STRAIGHT MINI-JOINER & STRAIGHT JOINER / FEEDER OPTIONS)



INSTALLATION INSTRUCTIONS

LSI TRACK CURRENT LIMITER

TRACK CURRENT LIMITER WIRING



| 1 CIRCUIT TRACK CURRENT LIMITER - WIRING | | |
|---|-------|-------------------|
| WIRE COLOR | LABEL | FUNCTION |
| BLACK | L1 | CIRCUIT 1 LINE |
| WHITE | N1 | CIRCUIT 1 NEUTRAL |
| 2 CIRCUIT TRACK CURRENT LIMITER - WIRING | | |
| WIRE COLOR | LABEL | FUNCTION |
| BLACK | L1 | CIRCUIT 1 LINE |
| RED | L2 | CIRCUIT 2 LINE |
| WHITE | N1 | CIRCUIT 1 NEUTRAL |
| WHITE | N2 | CIRCUIT 2 NEUTRAL |

NOTE: FOR CONTROLTrack INSTALLATIONS, DATA CANNOT BE FED THROUGH THE TRACK CURRENT LIMITER.