

# UV94 • 100V/120V/240V • LED



## Powerful blacklight fixture for special effect and themed environments.

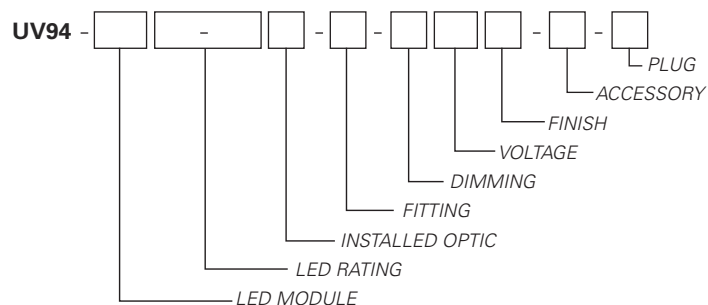
- High power, 365nm UV A LED array, 23200mW at 70 watts, field replaceable
- 30,000 hour life to 70% of initial intensity, L70
- Hidden integral electronic driver, compatible with trailing edge electronic low voltage dimmers (dimnable to 5%); other dimming options available
- High intensity 4°, 10°, 20° or 30° fixed optic choice
- LED module can be interchanged to switch beam spread via thumb screw. No tools required
- DMX control option available
- Heavy duty aluminum housing
- Black stainless steel safety cable with integral snap hook (included)
- Integrated double gate accessory holder capable of holding either a barndoor or hood and a glass accessory lens
- UV Lens UV90 blocks all visible light while allowing UV transmission (included)
- Double clutch locking for vertical focusing and tooled locking for horizontal focusing
- Finish: LSI Black
- Fixture weight: 10 lbs

## FIXTURE PART NUMBERS

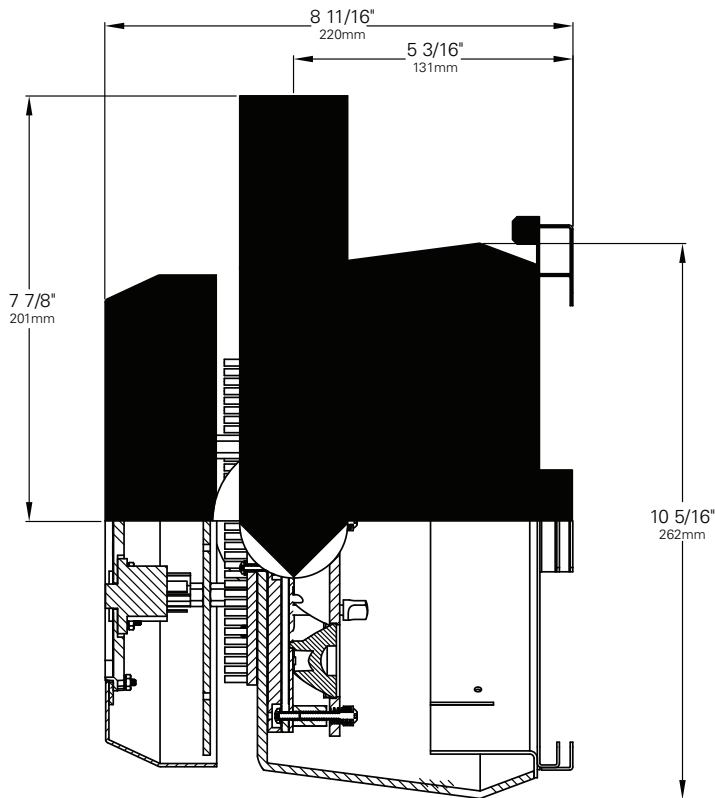
Please review the **ORDERING INFORMATION** section on the next page as well as the **MOUNTING OPTIONS** on page 3 to create a part number for each fixture that specifies the following:

- LED Module
- LED Rating
- Optic (mm/beam spread)
- Fitting/Controls (Dimming)
- Voltage
- Finish
- Accessory (optional)
- Starter Harness Plug

### PART NUMBER



Example Part Number: **UV94-N1623-3604-3A-DMX120B-BDHD-P1** is a UV Blacklight fixture with a high power, UV A (16) LED array, 23200mW/365 Wavelength/70 Watt LED rating, 4° Fixed Optic, 3A Mega Clamp Fitting. The 120V fixture in black finish is equipped with DMX Address Buttons, DMX compatible control gear, a P1 Starter Harness Plug (NEMA 5-15P, 125V Max) and UV lens. Barndoor and Hood are optional accessories.

**UV94** • 100V/120V/240V • LED**DRIVER TYPE (Electronic)**

Input Power (A) - 100V	0.70
Input Power (A) - 120V	0.58
Input Power (A) - 240V	0.29
Wattage	70
Power Factor - 115V	.95

**LED ORDERING INFORMATION****Base Fixture Model**

UV94-N16 = UV A (16) LED Array

**LED Rating (mW/Wavelength/Wattage)**

23-36 = 23200/365/70

**Installed Optic**

04 = 4° Fixed Optic

10 = 10° Fixed Optic

20 = 20° Fixed Optic

30 = 30° Fixed Optic

**Fitting/Controls (Dimming)**

2A-DMX = Unistrut Mount & DMX (1%)

2A-ELV = Unistrut Mount & ELV (5%)

2B-DMX = Base Plate Mount & DMX (1%)

2B-ELV = Base Plate Mount & ELV (5%)

3A-DMX = Mega Clamp Fitting & DMX (1%)

3A-ELV = Mega Clamp Fitting & ELV (5%)

**Voltage**

100 = 100V     120 = 120V     240 = 240V

**Finish**

B = Black

**Accessory (Optional)**

BD = Barndoor

HD = Hood

**Starter Harness Plug**

P1 = NEMA 5-15P (125V Max)

P2 = NEMA L5-15P (125V Max)

P3 = NEMA L6-20P (250V Max)

P4 = NEMA L5-20P (125V Max)

P5 = 10 FT, No Plug (250V Max)

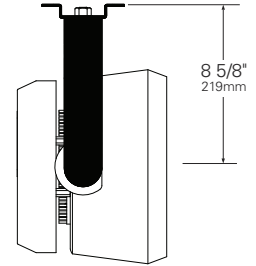
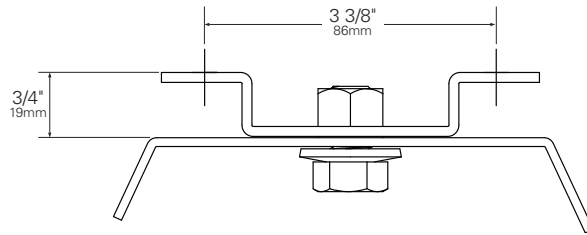
**Example Part Number:**

**UV94-N16**   **23-36**   **04**   **-3A-DMX**   **120B**   **-BDHD**   **-P1**  
FIXTURE MODEL   LED RATING   OPTIC   FITTING/DIMMING   VOLTAGE/FINISH   ACCESSORY   PLUG

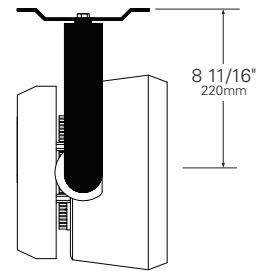
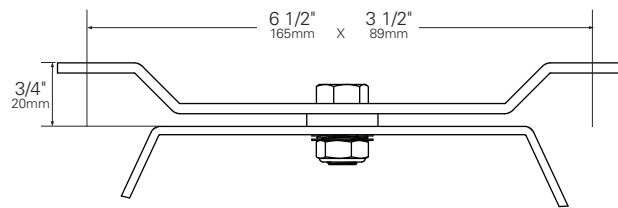
# UV94 • MOUNTING OPTIONS

FITTING	SIDE VIEW	PROFILE VIEW
---------	-----------	--------------

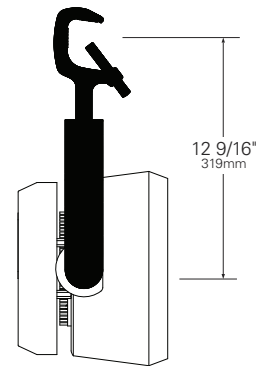
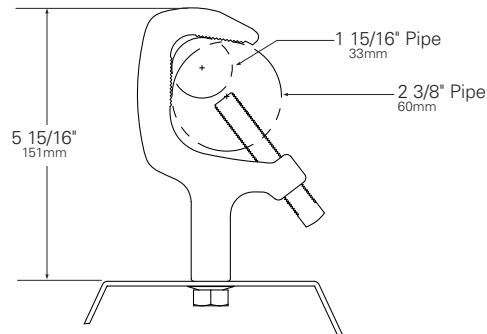
**2A Unistrut Fitting**



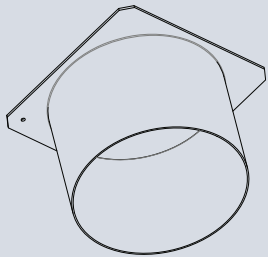
**2B Base Plate Fitting**



**3A Mega Clamp Fitting**

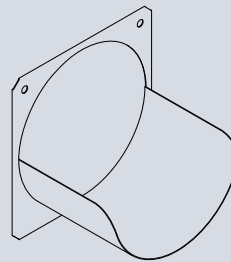


# UV94 • ACCESSORIES



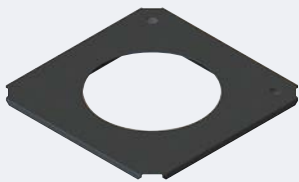
### HOOD UV90

6 inch deep hood. Controls spill light and glare. Black finish.



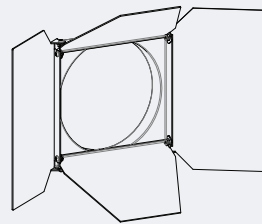
### HALF HOOD UV90

6 1/16 inch deep half hood. Controls spill light and glare. Black finish.



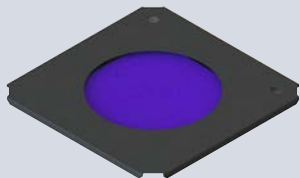
### DIRT SHIELD UV90

Clear glass in sheet metal frame to prevent dirt and debris from going inside the fixture.



### BARNDOOR UV8

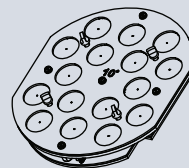
4-way individually adjustable blades for control of light beam. Black finish.



### UV LENS UV90

Narrow band pass filter blocks all visible light while allowing UV transmission.

### UV 94 FIXED OPTICS



Beam Spread	Part Number
4°	Module-N16-04-UV94
10°	Module-N16-10-UV94
20°	Module-N16-20-UV94
30°	Module-N16-30-UV94