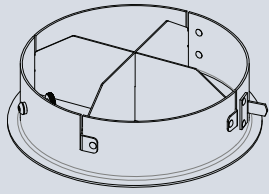
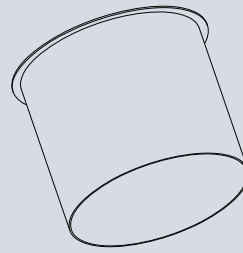


# LP2 • ACCESSORIES



## CROSS BAFFLE LP2B

Internal insert with cross blades. Controls spill light and glare. Black finish.



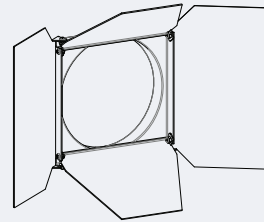
## HOOD LP2B

6 inch deep hood. Interior flocking included to control spill light and glare. Black finish. LP2 Holder (External Accessory Cartridge) required.



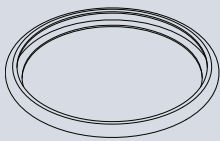
## LOUVER HEX EB

1/8" thick Hexcell black metal louver used for thin profile. Black finish.



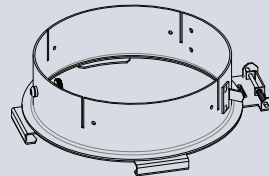
## BARNDOOR LP2B

4-way individually adjustable blades for control of light beam. Black finish. LP2 Holder required.



## BACKER RING EB

Stainless steel ring to hold gel when no other size E accessory is being used. Black finish.



## LP2 HOLDER

External Accessory cartridge to hold LP2 hood and LP2 barndoor. Black finish.

# LP2 • GELS

As the foremost innovator in accent lighting, LSI offers a complete range of pre-cut Gels to modify the spread and color of light.



## SPREAD GELS

Size: E (158 mm diameter)	Spread Gel
GEL-L1-E	1° Spread Gel
GEL-L5-E	5° Spread Gel
GEL-L10-E	10° Spread Gel
GEL-L20-E	20° Spread Gel
GEL-L30-E	30° Spread Gel
GEL-L40-E	40° Spread Gel
GEL-L60-E	60° Spread Gel
GEL-L80-E	80° Spread Gel
GEL-L30X5-E	30° by 5° Spread Gel
GEL-L40X1-E	40° by 1° Spread Gel
GEL-L60X1-E	60° by 1° Spread Gel
GEL-L60X10-E	60° by 10° Spread Gel
GEL-L75X45-E	75° by 45° Spread Gel
GEL-L90X60-E	90° by 60° Spread Gel
GEL-R101-E	Beam Softener

## COLOR GELS

Size: E (158 mm diameter)	Gel Color	% of Light Transmission	Size: E (158 mm diameter)	Gel Color	% of Light Transmission
GEL-R2-E	Bastard Amber	78	GEL-R312-E	Canary	85
GEL-R7-E	Pale Yellow	96	GEL-R331-E	Shell Pink	68
GEL-R12-E	Straw	88	GEL-R383-E	Sapphire Blue	4
GEL-R13-E	Straw Tint	78	GEL-R397-E	Pale Grey	70
GEL-R14-E	Medium Straw	68	GEL-R2001-E	Storaro Red	12
GEL-R21-E	Golden Amber	43	GEL-R2004-E	Storaro Green	15
GEL-R25-E	Orange Red	14	GEL-R2009-E	Storaro Violet	3
GEL-R26-E	Light Red	12	GEL-R3202-E	Full Blue	36
GEL-R27-E	Medium Red	4	GEL-R3204-E	Half Blue	52
GEL-R57-E	Lavender	24	GEL-R3206-E	Third Blue	64
GEL-R62-E	Booster Blue	54	GEL-R3216-E	Eighth Blue (Boosts 3200K to 3300K)	81
GEL-R71-E	Sea Blue	30	GEL-R3318-E	Tough 1/8 Minusgreen	89
GEL-R72-E	Azure Blue	44	GEL-R3410-E	Roscocolor (1/8 CTO) (Reduces 5500K to 4900K)	92
GEL-R91-E	Primary Green	7	GEL-R3441-E	Full Straw (CTS)	50
GEL-R97-E	Light Grey	50	GEL-R3443-E	Quarter Straw (CTS)	81
GEL-R98-E	Medium Grey	25	GEL-R4330-E	CalColor 30 Cyan	63
GEL-R101-E	Light Frost	N/A	GEL-R4415-E	CalColor 15 Green	67
GEL-R104-E	Tough Silk	N/A	GEL-R4490-E	CalColor 90 Green	25
GEL-R119-E	Lt. Hamburg Frost	N/A	GEL-R4860-E	CalColor 60 Pink	46
GEL-R121-E	Blue Diffusion	N/A	GEL-R4890-E	CalColor 90 Pink	38
GEL-R305-E	Rose Gold	75	GEL-R4930-E	CalColor 30 Lavender	47

\* Backer Ring EB required to hold gels when no other rimmed "E" accessories are used.

Type	ROSCO #	ROSCO Description	Resulting CCT
Amber Filters Lower CCT	3420	Double CTO	1531
	3407	Sun CTO	1999
	3401	Sun 85	2154
	3411	Sun 3/4 CTO	2154
	3408	Sun 1/2 CTO	2414
	3409	Sun 1/4 CTO	2664
	3410	Sun 1/8 CTO	2830
	3114	UV Filter	2930
Blue Filters Raise CCT	3220	Double Blue	N/A
	3202	Full Blue	4942
	3203	Three-Quarter Blue	4286
	3204	Half Blue	3769
	3206	Third Blue	3517
	3208	Quarter Blue	3297
	3216	Eighth Blue	3112