

LX2020 • ACCESSORIES



1 LIGHT BLOCKING SCREENS AAA

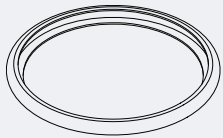
Stainless steel mesh screens used alone or in combinations will block from approximately 20% to 90% of the transmitted light without changing color temperature of the light.

No.	% of Light Blocked
AAA801S	20
AAA802S	30
AAA803S	40



LOUVER HEX AAAB

1/8" thick Hexcell black metal louver used for thin profile. Black finish.



BACKER RING AAAB

Aluminum ring to hold thin film gels when no other size AAAB accessories are being used. Black finish.

1. Figures vary based upon LED module/optic being used and relationship of screen(s) to LED module/optic and to each other.

LX2020 • GELS

As the foremost innovator in accent lighting, LSI offers a complete range of pre-cut Gels to modify the spread and color of light for the LumeLEX LED Series.



LumeLEX® SPREAD GELS

Size: AAA (60 mm diameter)	Spread Gel
GEL-L1- AAA	1° Spread Gel
GEL-L5- AAA	5° Spread Gel
GEL-L10- AAA	10° Spread Gel
GEL-L20- AAA	20° Spread Gel
GEL-L30- AAA	30° Spread Gel
GEL-L40- AAA	40° Spread Gel
GEL-L60- AAA	60° Spread Gel
GEL-L80- AAA	80° Spread Gel
GEL-L30X5- AAA	30° by 5° Spread Gel
GEL-L40X1- AAA	40° by 1° Spread Gel
GEL-L60X1- AAA	60° by 1° Spread Gel
GEL-L60X10- AAA	60° by 10° Spread Gel
GEL-L75X45- AAA	75° by 45° Spread Gel
GEL-L90X60- AAA	90° by 60° Spread Gel
GEL-R101- AAA	Beam Softener

LumeLEX® COLOR GELS

Size: AAA (60 mm diameter)	Gel Color	% of Light Transmission	Size: AAA (60 mm diameter)	Gel Color	% of Light Transmission
GEL-R2- AAA	Bastard Amber	78	GEL-R312- AAA	Canary	85
GEL-R7- AAA	Pale Yellow	96	GEL-R331- AAA	Shell Pink	68
GEL-R12- AAA	Straw	88	GEL-R383- AAA	Sapphire Blue	4
GEL-R13- AAA	Straw Tint	78	GEL-R397- AAA	Pale Grey	70
GEL-R14- AAA	Medium Straw	68	GEL-R2001- AAA	Storaro Red	12
GEL-R21- AAA	Golden Amber	43	GEL-R2004- AAA	Storaro Green	15
GEL-R25- AAA	Orange Red	14	GEL-R2009- AAA	Storaro Violet	3
GEL-R26- AAA	Light Red	12	GEL-R3202- AAA	Full Blue	36
GEL-R27- AAA	Medium Red	4	GEL-R3204- AAA	Half Blue	52
GEL-R57- AAA	Lavender	24	GEL-R3206- AAA	Third Blue	64
GEL-R62- AAA	Booster Blue	54	GEL-R3216- AAA	Eighth Blue (Boosts 3200K to 3300K)	81
GEL-R71- AAA	Sea Blue	30	GEL-R3318- AAA	Tough 1/8 Minusgreen	89
GEL-R72- AAA	Azure Blue	44	GEL-R3410- AAA	Roscocolor (1/8 CTO) (Reduces 5500K to 4900K)	92
GEL-R91- AAA	Primary Green	7	GEL-R3441- AAA	Full Straw (CTS)	50
GEL-R97- AAA	Light Grey	50	GEL-R3443- AAA	Quarter Straw (CTS)	81
GEL-R98- AAA	Medium Grey	25	GEL-R4330- AAA	CalColor 30 Cyan	63
GEL-R101- AAA	Light Frost	N/A	GEL-R4415- AAA	CalColor 15 Green	67
GEL-R104- AAA	Tough Silk	N/A	GEL-R4490- AAA	CalColor 90 Green	25
GEL-R119- AAA	Lt. Hamburg Frost	N/A	GEL-R4860- AAA	CalColor 60 Pink	46
GEL-R121- AAA	Blue Diffusion	N/A	GEL-R4890- AAA	CalColor 90 Pink	38
GEL-R305- AAA	Rose Gold	75	GEL-R4930- AAA	CalColor 30 Lavender	47

* Backer Ring AAAB required to hold gels when no other rimmed "AAA" accessories are used.

Type	ROSCO #	ROSCO Description	Resulting CCT
Amber Filters Lower CCT	3420	Double CTO	1531
	3407	Sun CTO	1999
	3401	Sun 85	2154
	3411	Sun 3/4 CTO	2154
	3408	Sun 1/2 CTO	2414
	3409	Sun 1/4 CTO	2664
	3410	Sun 1/8 CTO	2830
	3114	UV Filter	2930
Blue Filters Raise CCT	3220	Double Blue	N/A
	3202	Full Blue	4942
	3203	Three-Quarter Blue	4286
	3204	Half Blue	3769
	3206	Third Blue	3517
	3208	Quarter Blue	3297
	3216	Eighth Blue	3112