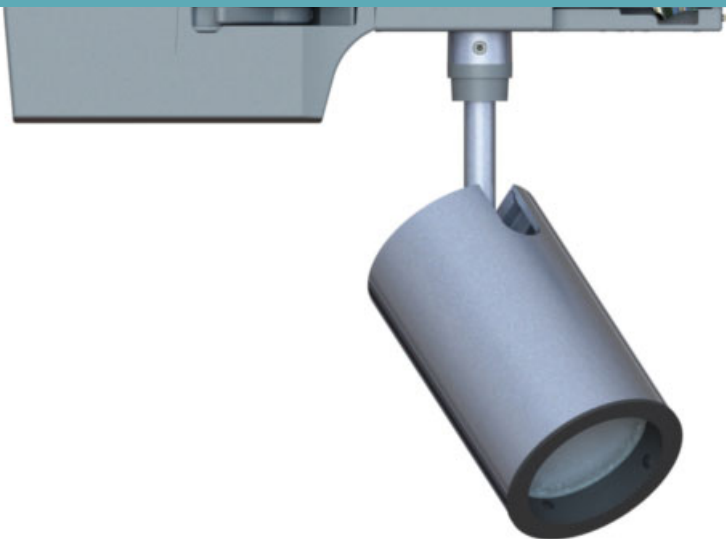


LX2020 • 120/277V • LED • COB • CONTROLTrack COMPATIBLE



These LED Cylinder units offer high functionality in LSI's smallest, sleekest package.

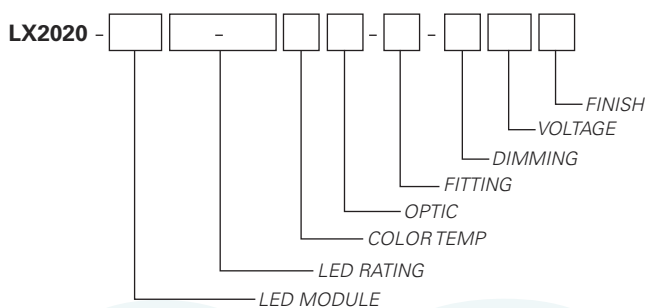
- 4° optic produces 26000 CBCP with 270 lumens at 4 watts
- System efficiency up to 46 lumens/watt
- Exceeds ANSI specifications by maintaining extremely tight color consistency over the life of the fixture
- Tested to LM79 and LM80 Protocols
- 50,000 hour life to 70% lumen output, L₇₀ at 95°F max ambient
- Color Rendering Index (CRI) 90+
- Color Fidelity Index (R_f) 92
- Gamut Area Index (R_g) 102
- Color consistency, 2 MacAdam ellipses
- DMX compatible with dimming below 1%
- 0-10V dimming allows for 2 zones of control on one circuit CONTROLTrack down to 0.1%, with convenient zone selection switch
- Removable accessory cartridge for any double combination of size-AAA LSI filters and accessories
- No UV or IR emissions; no mercury or lead
- On/off safety switch (on most mounting types)
- Sturdy die-cast aluminum housing
- Self and wrench locking stem for vertical and horizontal focusing
- Finishes: LSI Black, White, and Silver
- Fixture weight: 3 lbs

FIXTURE PART NUMBERS

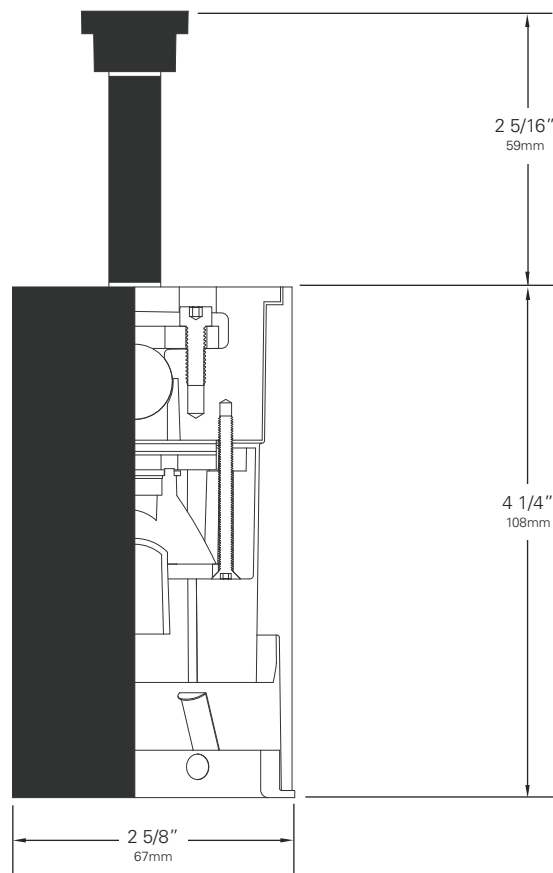
Please review the **ORDERING INFORMATION** section on the next page as well as the **MOUNTING OPTIONS** on page 3 to create a part number for each fixture that specifies the following:

- LED Module
- LED Rating
- Color Temperature
- Optic - mm/beam spread
- Fitting/Controls (Dimming)
- Voltage
- Finish

PART NUMBER



Example Part Number: **LX2020-ZE102-903004-CT4-DX120W** is a fixture with a single LED module, 270 Lumen/90 CRI/4 Watt LED rating, 3000°K Color Temperature, 35mm 4° Optic, CT4 CONTROLTrack fitting with DMX Address knobs and DMX compatible control gear, 120V and a White finish.

LX2020 • 120/277V • LED • COB • CONTROLTrack COMPATIBLE**DRIVER TYPE (Electronic)**

| | |
|------------------------|------|
| Input Power (A) - 120V | 0.04 |
| Input Power (A) - 277V | 0.02 |
| Wattage | 4 |
| Power Factor - 115V | 0.96 |

LED ORDERING INFORMATION**Base Fixture Model**

LX2020-ZE1 (Single LED)

LED Rating (Lumens/CRI/Wattage)

02-90 = 270/90/4

Color Temperature

27 = 2700K

30 = 3000K

35 = 3500K

40 = 4000K

Optic

04 = 35mm/ 4°

12 = 35mm/ 12°

25 = 35mm/ 25°

Fitting/Controls (Dimming)

CT2-10 = CONTROLTrack Fitting & 0-10V (0.1%)

CT4-DX = CONTROLTrack Fitting & DMX (<1%)

Voltage

120 = 120V

230 = 220-240V

277 = 277V

Finish

B = Black

W = White

S = Silver

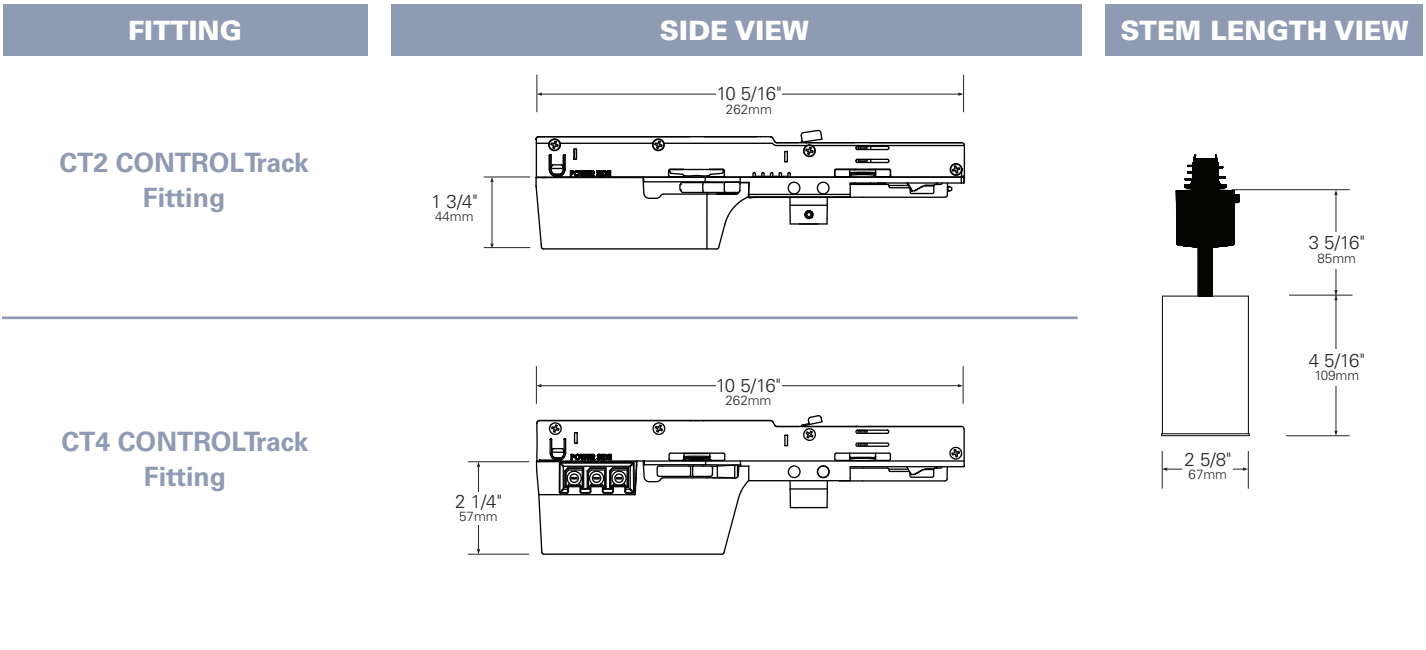
Example Part Number:

LX2020-ZE1 **02-90** **30** **04 - CT4-DX** **120** **W**
FIXTURE MODEL LED RATING COLOR TEMP OPTIC FITTING/DIMMING VOLTAGE FINISH

Other Options (Consult Factory):

- Custom Stems, specify length (4" - 48")
- Custom Finish, RAL palette

LX2020 • MOUNTING OPTIONS



LX2020 • PERFORMANCE

The performance characteristics of the LX2020 family of products can be customized based on the LED module and the optic selected.

Each available LED module is defined by four characteristics – the color rendering index (CRI), the correlated color temperature (CCT), the power that it uses (watts), its “available lumens” and beam spread. Note that available lumens is a theoretical value that represents the light output of the module on its own – no fixture or optic attached.

In the LSI part number, the LED module is specified with a letter and a number that immediately follow the product series number. For example, in the part number LX2020-ZE102-903004-CT4-DX120B, the “ZE102-903004” represents an LED module with an output of 270 lumens, a CRI of 90, a power usage of 4 watts, color temperature of 3000K and a 4-Degree beam.

Additional parameters, such as Center Beam Candle Power (CBCP), Delivered Lumens, and Efficiency (Lumens per Watt) are all shown in a table that is organized by LED module and optic combination.

| CBCP = Center Beam Candle Power | | | |
|---------------------------------|-------------------|-------|-----|
| LED Module | Optic (Reflector) | | |
| Lumens/CRI/Wattage | 04° | 12° | 25° |
| 270/90/4 | 26,016 | 3,747 | 995 |

| Delivered Lumens | | | |
|--------------------|-------------------|-----|-----|
| LED Module | Optic (Reflector) | | |
| Lumens/CRI/Wattage | 04° | 12° | 25° |
| 270/90/4 | 116 | 182 | 165 |

| Efficiency = Lumens Per Watt | | | |
|------------------------------|-------------------|-----|-----|
| LED Module | Optic (Reflector) | | |
| Lumens/CRI/Wattage | 04° | 12° | 25° |
| 270/90/4 | 29 | 46 | 41 |

| LED Module Lumens/CRI/Wattage SKU Code | 270/90/4 02-90 |
|--|-------------------|
| Nominal Fixture Power (+/- 20%), Watts | 4 |
| Maximum Inrush Current Amps | 10 |
| Minimum Power Factor | 0.92 |

Inrush current is instantaneous current drawn by the LED only when fixture is initially powered on or instantaneously changed from full dim to full bright. For more details see Dimming Application Sheet, IS-0119.

LX2020 • PHOTOMETRIC DATA

PHOTOMETRIC DATA

LX2020

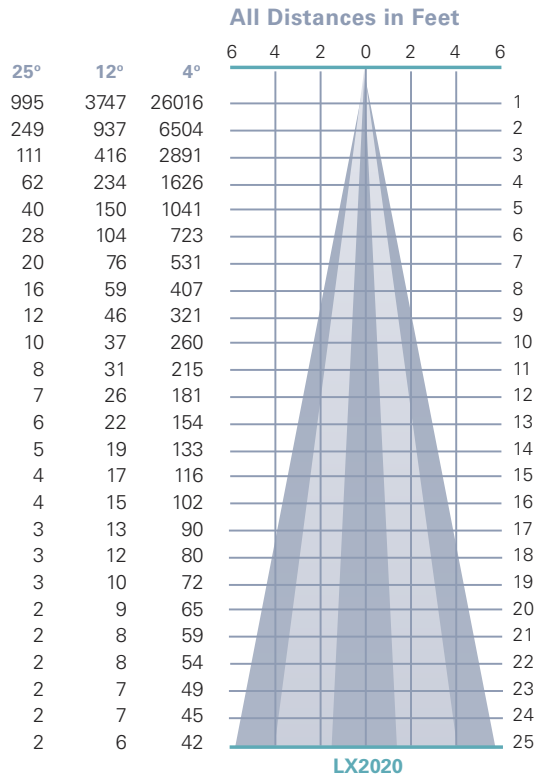
Beam Spread (minimum) **4°**
 Center Beam Candlepower **26016**
 CRI **90+**

LX2020

Beam Spread (minimum) **12°**
 Center Beam Candlepower **3747**
 CRI **90+**

LX2020

Beam Spread (minimum) **25°**
 Center Beam Candlepower **995**
 CRI **90+**

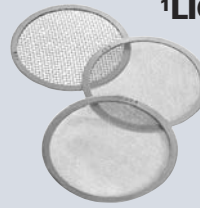


LX2020 • ACCESSORIES



LOUVER HEX AAAB

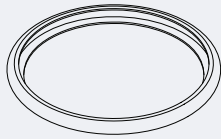
1/8" thick Hexcell black metal louver used for thin profile. Black finish.



¹LIGHT BLOCKING SCREENS AAA

Stainless steel mesh screens used alone or in combinations will block from approximately 20% to 90% of the transmitted light without changing color temperature of the light.

| No. | % of Light Blocked |
|---------|--------------------|
| AAA801S | 20 |
| AAA802S | 30 |
| AAA803S | 40 |



BACKER RING AAAB

Aluminum ring to hold thin film gels when no other size AAA accessories are being used. Black finish.

1. Figures vary based upon LED module/optic being used and relationship of screen(s) to LED module/optic and to each other.

LX2020 • GELS

As the foremost innovator in accent lighting, LSI offers a complete range of pre-cut Gels to modify the spread and color of light for the LumeLEX LED Series.



LumeLEX® SPREAD GELS

| Size: AAA (60 mm diameter) | Spread Gel |
|-------------------------------|-----------------------|
| GEL-L1- AAA | 1° Spread Gel |
| GEL-L5- AAA | 5° Spread Gel |
| GEL-L10- AAA | 10° Spread Gel |
| GEL-L20- AAA | 20° Spread Gel |
| GEL-L30- AAA | 30° Spread Gel |
| GEL-L40- AAA | 40° Spread Gel |
| GEL-L60- AAA | 60° Spread Gel |
| GEL-L80- AAA | 80° Spread Gel |
| GEL-L30X5- AAA | 30° by 5° Spread Gel |
| GEL-L40X1- AAA | 40° by 1° Spread Gel |
| GEL-L60X1- AAA | 60° by 1° Spread Gel |
| GEL-L60X10- AAA | 60° by 10° Spread Gel |
| GEL-L75X45- AAA | 75° by 45° Spread Gel |
| GEL-L90X60- AAA | 90° by 60° Spread Gel |
| GEL-R101- AAA | Beam Softener |

LumeLEX® COLOR GELS

| Size: AAA (60 mm diameter) | Gel Color | % of Light Transmission | Size: AAA (60 mm diameter) | Gel Color | % of Light Transmission |
|-------------------------------|-------------------|----------------------------|-------------------------------|--|----------------------------|
| GEL-R2- AAA | Bastard Amber | 78 | GEL-R312- AAA | Canary | 85 |
| GEL-R7- AAA | Pale Yellow | 96 | GEL-R331- AAA | Shell Pink | 68 |
| GEL-R12- AAA | Straw | 88 | GEL-R383- AAA | Sapphire Blue | 4 |
| GEL-R13- AAA | Straw Tint | 78 | GEL-R397- AAA | Pale Grey | 70 |
| GEL-R14- AAA | Medium Straw | 68 | GEL-R2001- AAA | Storaro Red | 12 |
| GEL-R21- AAA | Golden Amber | 43 | GEL-R2004- AAA | Storaro Green | 15 |
| GEL-R25- AAA | Orange Red | 14 | GEL-R2009- AAA | Storaro Violet | 3 |
| GEL-R26- AAA | Light Red | 12 | GEL-R3202- AAA | Full Blue | 36 |
| GEL-R27- AAA | Medium Red | 4 | GEL-R3204- AAA | Half Blue | 52 |
| GEL-R57- AAA | Lavender | 24 | GEL-R3206- AAA | Third Blue | 64 |
| GEL-R62- AAA | Booster Blue | 54 | GEL-R3216- AAA | Eighth Blue (Boosts 3200K to 3300K) | 81 |
| GEL-R71- AAA | Sea Blue | 30 | GEL-R3318- AAA | Tough 1/8 Minusgreen | 89 |
| GEL-R72- AAA | Azure Blue | 44 | GEL-R3410- AAA | Roscoun (1/8 CTO) (Reduces 5500K to 4900K) | 92 |
| GEL-R91- AAA | Primary Green | 7 | GEL-R3441- AAA | Full Straw (CTS) | 50 |
| GEL-R97- AAA | Light Grey | 50 | GEL-R3443- AAA | Quarter Straw (CTS) | 81 |
| GEL-R98- AAA | Medium Grey | 25 | GEL-R4330- AAA | CalColor 30 Cyan | 63 |
| GEL-R101- AAA | Light Frost | N/A | GEL-R4415- AAA | CalColor 15 Green | 67 |
| GEL-R104- AAA | Tough Silk | N/A | GEL-R4490- AAA | CalColor 90 Green | 25 |
| GEL-R119- AAA | Lt. Hamburg Frost | N/A | GEL-R4860- AAA | CalColor 60 Pink | 46 |
| GEL-R121- AAA | Blue Diffusion | N/A | GEL-R4890- AAA | CalColor 90 Pink | 38 |
| GEL-R305- AAA | Rose Gold | 75 | GEL-R4930- AAA | CalColor 30 Lavender | 47 |

* Backer Ring AAAB required to hold gels when no other rimmed "AAA" accessories are used.

| LSI ROSCO GEL CCT CONVERSION CHART FROM 3000K | | | |
|---|---------|--------------------|---------------|
| Type | ROSCO # | ROSCO Description | Resulting CCT |
| Amber Filters Lower CCT | 3420 | Double CTO | 1531 |
| | 3407 | Sun CTO | 1999 |
| | 3401 | Sun 85 | 2154 |
| | 3411 | Sun 3/4 CTO | 2154 |
| | 3408 | Sun 1/2 CTO | 2414 |
| | 3409 | Sun 1/4 CTO | 2664 |
| | 3410 | Sun 1/8 CTO | 2830 |
| | 3114 | UV Filter | 2930 |
| Blue Filters Raise CCT | 3220 | Double Blue | N/A |
| | 3202 | Full Blue | 4942 |
| | 3203 | Three-Quarter Blue | 4286 |
| | 3204 | Half Blue | 3769 |
| | 3206 | Third Blue | 3517 |
| | 3208 | Quarter Blue | 3297 |
| | 3216 | Eighth Blue | 3112 |