

LXS2038 • 120/277V • XICATO 9MM



Elegant fixed downlight designed specifically for the most demanding architectural applications

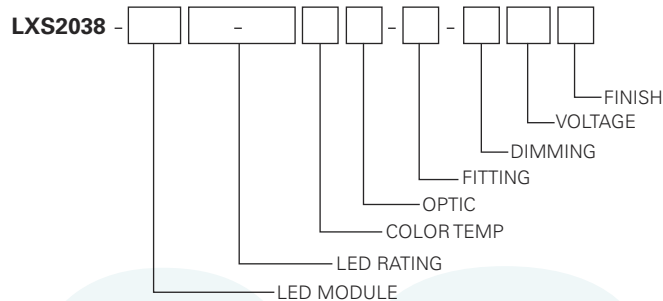
- Designed for the Xicato XTM 9mm LED module up to 14Watts, enabling narrow beams
- Extremely tight color consistency (less than 2 MacAdam Ellipses)
- System efficiency up to 39 lumens/watt
- 50,000 hour life to 70% lumen output, L70 at 95°F max ambient
- Interchangeable LED module, CRI and/or color temperature, via tool-less magnetic mounting
- Field Interchangeable optics (16°– 40°) modify the beam spread distribution
- Choice of color temperature
- Color Rendering Index (CRI) of either 98 (high) or 83 (standard)
- Choice of lumen outputs (delivered lumens)
- Tested to LM79 and LM80 Protocols, TM-30 available
- Hidden integral electronic driver compatible with various dimmers down to 0.1%
- Integral Dimmer with built-in potentiometer also available, dimming down to 10%
- Accessory holder accepts up to two size-AAA LSI filters and accessories
- Optional Cross Baffle accessory holder available
- Sturdy die-cast aluminum housing
- No UV or IR emissions; no mercury or lead
- On/off safety switch (on 0E and PT5 Track fitting)
- Finishes: LSI Black, White, and Silver
- Fixture weight: 3 lbs
- All modules are field replaceable
- Fixed center stem
- Maximum stem length is 48"

FIXTURE PART NUMBERS

Please review the **ORDERING INFORMATION** section on the next page as well as the **MOUNTING OPTIONS** on page 3 to create a part number for each fixture that specifies the following:

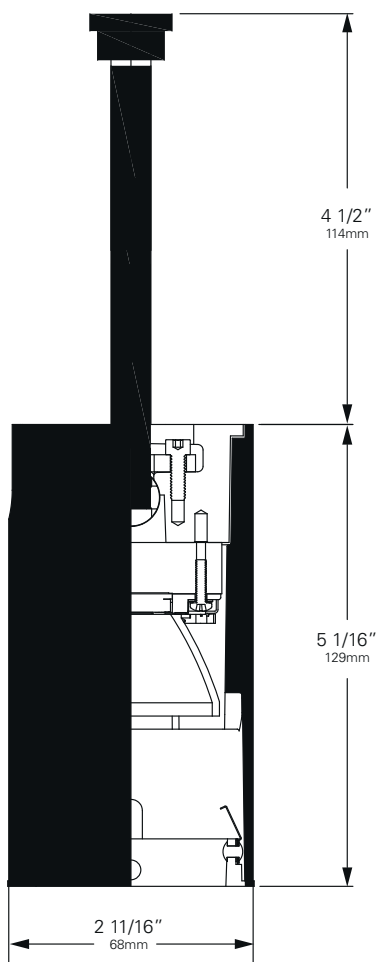
- LED Module
- LED Rating
- Color Temperature
- Optic- mm/beam spread
- Fitting/Controls (Dimming)
- Voltage
- Finish

PART NUMBER



Example Part Number: **LXS2038-TS907-9830P1-0E-TE120W** is a fixture with a Xicato 9mm LED module, 700 Lumen/98 CRI/14 Watt LED rating, 3000° Color Temperature, 50mm 16° Optic, 0E Track fitting with Trailing Edge group dimming capability, 120V and a White finish.

LXS2038 • 120/277V • XICATO 9MM



Color Temperature & Center Point Tolerance

| Color Temp | Center Point | Tolerance |
|------------|--------------|-----------|
| 2700K | 2700K | +/- 40K |
| 3000K | 2950K | +/- 50K |
| 3500K | 3420K | +/- 60K |
| 4000K | 4000K | +/- 70K |

Chromaticity Specifications

| LED | R _a -CRI | R _f -Fidelity | R _g -Gamut Area |
|------------|---------------------|--------------------------|----------------------------|
| T19-TS9-83 | 83 | 78 | 101 |
| T19-TS9-98 | 98 | 96 | 103 |

XTM 9MM ORDERING INFORMATION

Base Fixture Model

LXS2038-TS9 (XTM 9mm)

LED Rating (Lumens/CRI/Wattage)

07-98 = 700/98/14 09-83 = 930/83/14

Color Temperature

27= 2700K 30= 3000K
 35= 3500K 40= 4000K

Optic

P1 = 50mm/ 16°
 P2 = 50mm/ 24°
 P4 = 50mm/ 40°

Fitting/Controls (Dimming)

0E-TE = Track Fitting & Trailing Edge (10%)
 PT5-ED = Track Fitting & Integral Dimmer (0.1%)
 0EEF-TE = Security/Worklight Track Fitting & Trailing Edge (10%)
 5A-TE = Canopy Fitting & Trailing Edge (10%)
 5B-ED = Canopy Fitting & Integral Dimmer (0.1%)
 5B-10 = Canopy Fitting & 0-10V (0.1%)

Voltage

120 = 120V 230 = 220-240V 277 = 277V

Finish

B = Black W = White S = Silver

Example Part Number:

LXS2038-TS9 **07-98** **30** **P1 - 0E-TE** **120** **W**
FIXTURE MODEL LED RATING COLOR TEMP OPTIC FITTING/ DIMMING VOLTAGE FINISH

ADDITIONAL LX SELECT MODULES ORDERING INFORMATION

Base LED Module Model

MOD-LXS2030-TS9 (XTM 9mm)

LED Rating (Lumens/CRI/Wattage)

07-98 = 700/98/14 09-83 = 930/83/14

Color Temperature

27= 2700K 30= 3000K
 35= 3500K 40= 4000K

Example Part Number:

MOD-LXS2030-TS9 **07-98** **30**
MODULE MODEL LED RATING COLOR TEMP

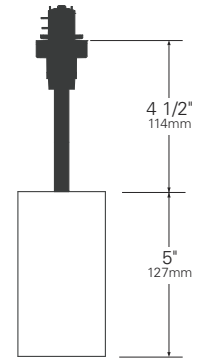
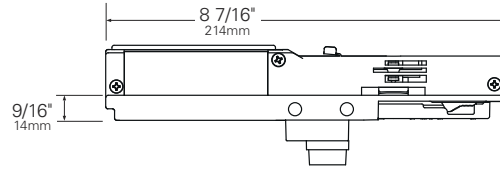
Other Options (Consult Factory):

- Custom Stems, specify length (4" - 48")
- Custom Finish, RAL palette

LXS2038 • MOUNTING OPTIONS

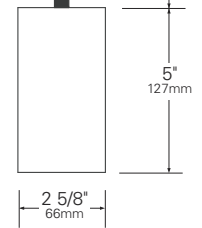
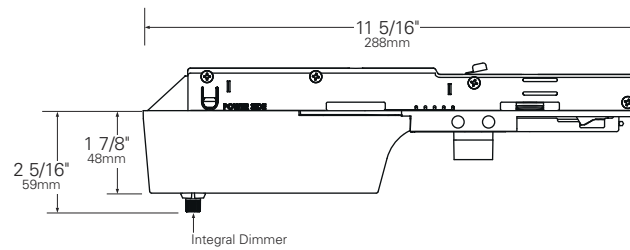
| FITTING | SIDE VIEW | STEM LENGTH VIEW |
|---------|-----------|------------------|
|---------|-----------|------------------|

**0E Track Fitting/
0EEF Security/Worklight
Fitting***

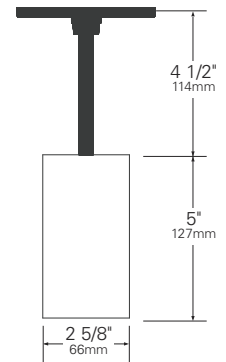
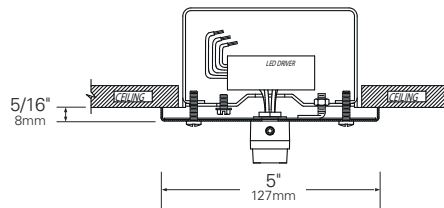


*0EEF Security/Worklight fittings do not have an on/off switch. Fixture is always on.

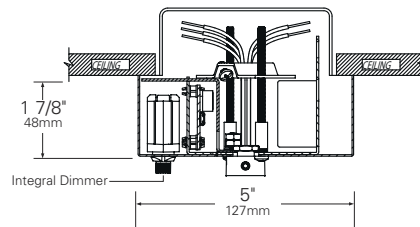
**PT5-ED Track Fitting
with Integral Dimmer**



**5A Canopy Fitting
with TE Dimming**



**5B Canopy Fitting
with Integral Dimmer
and 0-10V Dimming**



LXS2038 • PERFORMANCE

The performance characteristics of the LumeLEX family of products can be customized based on the LED module and the optic (reflector) selected.

Each available LED module is defined by four characteristics – the color rendering index (CRI), the correlated color temperature (CCT), the power that it uses (watts), and its “available lumens.” Note that available lumens is a theoretical value that represents the light output of the module on its own – no fixture or optic attached.

In the LSI part number, the LED module is specified with a range of numbers that immediately follow the product series number. For example, in the part number LXS2038-TS907-9827P1-0E-TE120B, the “TS907-9827” represents an LED module with an output of 700 lumens, a CRI of 98, a power usage of 14 watts and a color temperature of 2700K.

The available optics (reflectors) are characterized by size, beam angle, and in some cases the characteristics of the field angle (narrow or wide). The optic is specified by the two characters that follow the LED designation in the part number. For example, the “P1” in LXS2038-TS907-9827P1-0E-TE120B is a 50mm diameter optic that has a 16-Degree beam.

Additional parameters, such as Center Beam Candle Power (CBCP), Delivered Lumens, and Efficiency (Lumens per Watt) are all shown in a table that is organized by LED module and optic combination.

| CBCP = Center Beam Candle Power | | | |
|---------------------------------|-------------------|------|------|
| LED Rating | Optic (Reflector) | | |
| Lumens/CRI/Wattage | P1 | P2 | P4 |
| 700/98/14 | 4347 | 2149 | 1071 |
| 930/83/14 | 5775 | 2855 | 1423 |

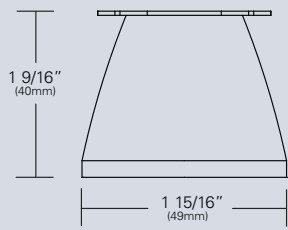
| Delivered Lumens | | | |
|--------------------|-------------------|-----|-----|
| LED Rating | Optic (Reflector) | | |
| Lumens/CRI/Wattage | P1 | P2 | P4 |
| 700/98/14 | 392 | 406 | 399 |
| 930/83/14 | 521 | 539 | 530 |

| Efficiency = Lumens Per Watt | | | |
|------------------------------|-------------------|----|----|
| LED Rating | Optic (Reflector) | | |
| Lumens/CRI/Wattage | P1 | P2 | P4 |
| 700/98/14 | 28 | 29 | 29 |
| 930/83/14 | 37 | 39 | 38 |

| LED Module | External System Dimming | |
|---|-------------------------|--------------------|
| Lumens/CRI/Wattage SKU Code | 700/98/14 07-98 | 930/83/14 09-83 |
| Nominal Fixture Power (+/- 20%), Watts | 14 | 14 |
| Maximum Inrush Current Amps | 10 | 10 |
| Minimum Power Factor | 0.90 | 0.90 |

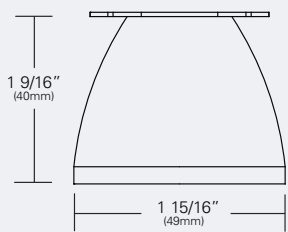
Inrush current is instantaneous current drawn by the LED only when fixture is initially powered on or instantaneously changed from full dim to full bright. For more details see Dimming Application Sheet, IS-0119.

LXS2038 • OPTICS



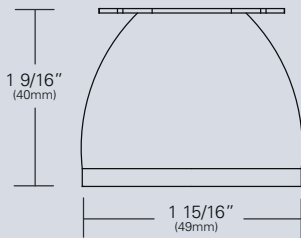
LX-P16-REF-CLR (P1) (50mm/16°)

Faceted specular metal optic.
Tool-less twist and lock
installation. Aluminized finish.



LX-P24-REF-CLR (P2) (50mm/24°)

Faceted specular metal optic.
Tool-less twist and lock
installation. Aluminized finish.



LX-P40-REF-CLR (P4) (50mm/40°)

Faceted specular metal optic.
Tool-less twist and lock
installation. Aluminized finish.

LXS2038 • PHOTOMETRIC DATA

LED RATING: 09-83

P1-50mm DIA Optic

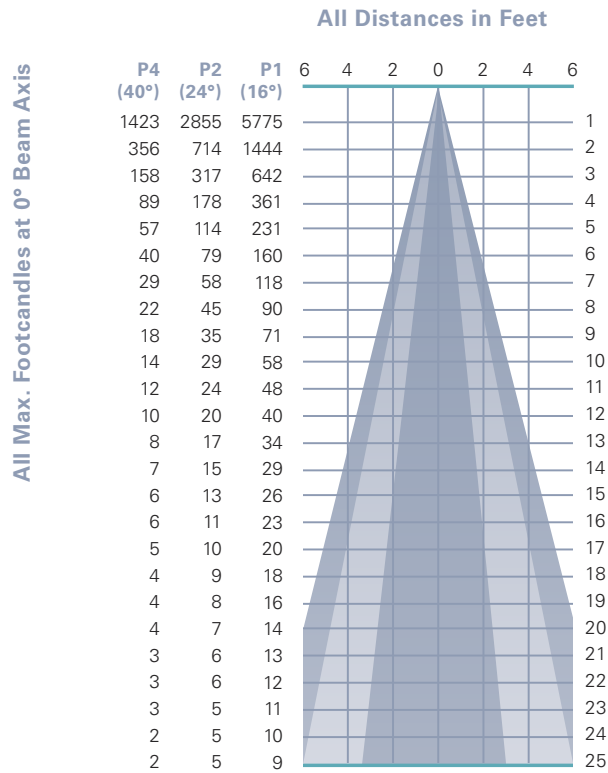
Beam Spread (minimum) **16°**
 Center Beam Candlepower **5775**
 CRI **83**

P2-50mm DIA Optic

Beam Spread (minimum) **24°**
 Center Beam Candlepower **2855**
 CRI **83**

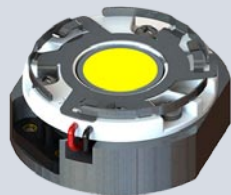
P4-50mm DIA Optic

Beam Spread (minimum) **40°**
 Center Beam Candlepower **1423**
 CRI **83**



Photometric Data based on LED Rating: 09-83 (930 Lumens/83CRI/14watts)

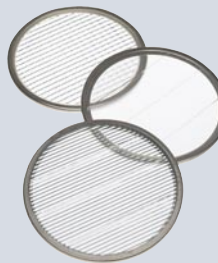
LXS2038 • ACCESSORIES



LXSelect 2030 TS9 LED MODULE

Interchangeable via tool-less magnetic mount.

For ordering information, please refer to page 2.



SPREAD LENSES AND BEAM SOFTENER

| No. | Description | % of Light Transmission |
|--------|---------------------|-------------------------|
| AAA990 | Spread Lens/Clear | 83 (5°X 50°) |
| AAA992 | Spread Lens/Clear | 85 (5°X 30°) |
| AAA995 | Spread Lens/Clear | 83 (50°X 50°) |
| AAA996 | Spread Lens/Clear | 86 (45°X 50°) |
| AAA998 | Beam Softener/Clear | 80 (45°X 45°) |



1' LIGHT BLOCKING SCREENS AAA

Stainless steel mesh screens used alone or in combinations will block from approximately 20% to 90% of the transmitted light without changing color temperature of the light.

| No. | % of Light Blocked |
|---------|--------------------|
| AAA801S | 20 |
| AAA802S | 30 |
| AAA803S | 40 |



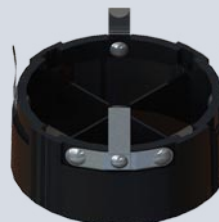
LOUVER HEX AAAB

1/8" thick Hexcell black metal louver used for thin profile. Black finish.



BACKER RING AAAB

Aluminum ring to hold thin film gels when no other size AAA accessories are being used. Black finish.



CROSS BAFFLE LX2030B

Controls spill light and glare. Capable of holding up to (2) additional size AAA accessories. Black finish.

1. Figures vary based upon LED module/optic being used and relationship of screen(s) to LED module/optic and to each other.

LXS2038 • GELS

As the foremost innovator in accent lighting, LSI offers a complete range of pre-cut Gels to modify the spread and color of light for the LumeLEX LED Series.



LumeLEX® SPREAD GELS

| Size: AAA (60 mm diameter) | Spread Gel |
|-------------------------------|-----------------------------|
| GEL-L1-AAA | 1° Spread Gel |
| GEL-L5-AAA | 5° Spread Gel |
| GEL-L10-AAA | 10° Spread Gel |
| GEL-L20-AAA | 20° Spread Gel |
| GEL-L30-AAA | 30° Spread Gel |
| GEL-L40-AAA | 40° Spread Gel |
| GEL-L60-AAA | 60° Spread Gel |
| GEL-L80-AAA | 80° Spread Gel |
| GEL-L30X5-AAA | 30° by 5° Spread Gel |
| GEL-L40X1-AAA | 40° by 1° Spread Gel |
| GEL-L60X1-AAA | 60° by 1° Spread Gel |
| GEL-L60X10-AAA | 60° by 10° Spread Gel |
| GEL-L75X45-AAA | 75° by 45° Spread Gel |
| GEL-L80X50-AAA | 80° by 50° Spread Gel |
| GEL-R101-AAA | Beam Softener (Light Frost) |

LumeLEX® COLOR GELS

| Size: AAA (60 mm diameter) | Gel Color | % of Light Transmission | Size: AAA (60 mm diameter) | Gel Color | % of Light Transmission |
|-------------------------------|-------------------|----------------------------|-------------------------------|---|----------------------------|
| GEL-R2-AAA | Bastard Amber | 78 | GEL-R312-AAA | Canary | 85 |
| GEL-R7-AAA | Pale Yellow | 96 | GEL-R331-AAA | Shell Pink | 68 |
| GEL-R12-AAA | Straw | 88 | GEL-R383-AAA | Sapphire Blue | 4 |
| GEL-R13-AAA | Straw Tint | 78 | GEL-R397-AAA | Pale Grey | 70 |
| GEL-R14-AAA | Medium Straw | 68 | GEL-R2001-AAA | Storaro Red | 12 |
| GEL-R21-AAA | Golden Amber | 43 | GEL-R2004-AAA | Storaro Green | 15 |
| GEL-R25-AAA | Orange Red | 14 | GEL-R2009-AAA | Storaro Violet | 3 |
| GEL-R26-AAA | Light Red | 12 | GEL-R3202-AAA | Full Blue CTB | 36 |
| GEL-R27-AAA | Medium Red | 4 | GEL-R3204-AAA | Half Blue CTB | 52 |
| GEL-R57-AAA | Lavender | 24 | GEL-R3206-AAA | Third Blue CTB | 64 |
| GEL-R62-AAA | Booster Blue | 54 | GEL-R3216-AAA | Eighth Blue CTB (Boosts 3200K to 3300K) | 81 |
| GEL-R71-AAA | Sea Blue | 30 | GEL-R3318-AAA | Tough 1/8 Minusgreen | 89 |
| GEL-R72-AAA | Azure Blue | 44 | GEL-R3410-AAA | Roscosun (1/8 CTO) (Reduces 5500K to 4900K) | 92 |
| GEL-R91-AAA | Primary Green | 7 | GEL-R3441-AAA | Full Straw (CTS) | 50 |
| GEL-R97-AAA | Light Grey | 50 | GEL-R3443-AAA | Quarter Straw (1/4 CTS) | 81 |
| GEL-R98-AAA | Medium Grey | 25 | GEL-R4330-AAA | CalColor 30 Cyan | 63 |
| GEL-R101-AAA | Light Frost | N/A | GEL-R4415-AAA | CalColor 15 Green | 67 |
| GEL-R104-AAA | Tough Silk | N/A | GEL-R4490-AAA | CalColor 90 Green | 25 |
| GEL-R119-AAA | Lt. Hamburg Frost | N/A | GEL-R4860-AAA | CalColor 60 Pink | 46 |
| GEL-R121-AAA | Blue Diffusion | N/A | GEL-R4890-AAA | CalColor 90 Pink | 38 |
| GEL-R305-AAA | Rose Gold | 75 | GEL-R4930-AAA | CalColor 30 Lavender | 47 |

* Backer Ring AAAB required to hold gels when no other rimmed "AAA" accessories are used.

| LSI ROSCO GEL CCT CONVERSION CHART FROM 3000K | | | |
|---|---------|------------------------|---------------|
| Type | ROSCO # | ROSCO Description | Resulting CCT |
| Amber Filters Lower CCT | 3420 | Roscosun Double CTO | 1531 |
| | 3407 | Roscosun CTO | 1999 |
| | 3401 | Roscosun 85 | 2154 |
| | 3411 | Roscosun 3/4 CTO | 2154 |
| | 3408 | Roscosun 1/2 CTO | 2414 |
| | 3409 | Roscosun 1/4 CTO | 2664 |
| | 3410 | Roscosun 1/8 CTO | 2830 |
| | 3114 | UV Filter | 2930 |
| Blue Filters Raise CCT | 3220 | Double Blue CTB | N/A |
| | 3202 | Full Blue CTB | 4942 |
| | 3203 | Three-Quarter Blue CTB | 4286 |
| | 3204 | Half Blue CTB | 3769 |
| | 3206 | Third Blue CTB | 3517 |
| | 3208 | Quarter Blue CTB | 3297 |
| | 3216 | Eighth Blue CTB | 3112 |

COLOR MEDIA

COLOR FILTERS

As the foremost innovator in accent lighting, LSI offers a complete range of permanent fade-free glass color filters, which are available in four stock diameters. All glass color filters are rimmed in a seamless aluminum ring and are slotted for heat expansion.



| Size | Diameter | LSI Fixture Series | No. | Color | % of Light Transmission |
|------|----------|---|-----|------------------|-------------------------|
| AAA | 2 3/8" | LumeLEX® 2020/2030/2031/2038, SSLCX16, SSL260 | 902 | Medium Pink | 36 |
| | | | 903 | Deep Pink | 37 |
| | | | 904 | Flesh Pink | 73 |
| AA | 3" | LumeLEX® 2044, LumeLEX 2048 | 906 | Pale Lavender | 14 |
| | | | 907 | Surprise Pink | 19 |
| A | 3 1/2" | LumeLEX® 2060, SSL230, SSLCX30, SSLGR30CL | 908 | Lilac | 21 |
| | | | 910 | Warm Red | 10 |
| | | | 911 | Strawberry | 6 |
| C | 4 3/4" | LumeLEX® 2084, LumeLEX® 2088, SSL238, SSLCX36, SSLCX38, SSLGR38CL | 912 | Ruby | 4 |
| | | | 913 | Magenta | 1 |
| | | | 914 | Light Amethyst | 25 |
| | | | 915 | Medium Amethyst | 16 |
| | | | 916 | Deep Amethyst | 4 |
| | | | 917 | Olive | 18 |
| | | | 918 | Light Green | 68 |
| | | | 920 | Medium Green | 25 |
| | | | 921 | Deep Green | 7 |
| | | | 922 | Silver green | 65 |
| | | | 923 | Yellow Green | 49 |
| | | | 924 | Emerald Green | 12 |
| | | | 925 | Light Turquoise | 68 |
| | | | 926 | Medium Turquoise | 40 |
| | | | 927 | Deep Turquoise | 17 |
| | | | 928 | Light Blue | 34 |
| | | | 930 | Medium Blue | 3 |
| | | | 932 | Daylight | 59 |
| | | | 933 | Gene Moore Blue | 18 |
| | | | 936 | Grey | 56 |
| | | | 937 | Light Blue Green | 17 |
| | | | 939 | Light Amber | 68 |
| | | | 940 | Medium Amber | 48 |
| | | | 941 | Deep Amber | 43 |
| | | | 942 | Straw | 78 |
| | | | 943 | Gold | 87 |
| | | | 944 | Canary Yellow | 84 |
| | | | 945 | Lemon | 81 |
| | | | 946 | Pumpkin | 32 |
| | | | 947 | Tangerine | 20 |
| | | | 948 | Orange | 23 |
| | | | 949 | Pink Gold | 54 |
| | | | 950 | Bronze | 48 |
| | | | 951 | Brass | 11 |
| | | | 952 | Autumn Tan | 11 |
| | | | 953 | Leaf Brown | 19 |
| | | | 954 | Butter Pecan | 3 |
| | | | 955 | Toasted Almond | 1 |

Notes:

1. Values given are approximate due to slight variations in glass color and thickness.

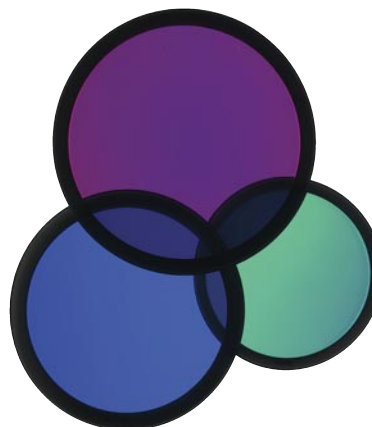
COLOR MEDIA

DICHROIC COLOR FILTERS

In addition to our complete line of glass color filters, LSI now offers dichroic glass color filters that achieve purer, more saturated, richer color by selective wavelength transmission. Since these filters reflect rather than absorb the unwanted color wavelengths, a higher intensity of colored light can be obtained with fewer or lower wattage fixtures. In addition, this selective transmission allows for very accurate color matching from filter to filter.

All standard LSI filter sizes are available in a wide palette of well chosen dichroic colors that can be used with all LSI fixtures that accept accessories.

LSI dichroic glass color filters have the added benefit of being rimmed for extra durability to allow for frequent usage without fear of breakage or edge chipping.



| Size | Diameter | LSI Fixture Series | Technical Data | No. | Color | % of Light Transmission |
|------|----------|--|--|------|--------------------|-------------------------|
| AAA | 2 3/8" | LumeLEX® 2020/2030/2031/2038, SSLCX16, SSL260 | Dichroic color filters are created in a vacuum chamber by multi-layer vapor deposits of different minerals onto low expansion, chemically resistant Borosilicate glass. | 2001 | Light Pink | 69 |
| AA | 3" | LumeLEX® 2044, LumeLEX 2048 | Deposits are made in alternating layers of varying microscopic thickness which allow very narrow color wavelengths to be selectively transmitted and all other wavelengths to be reflected. | 2002 | Medium Pink | 43 |
| A | 3 1/2" | LumeLEX® 2060, SSL230, SSLCX30, SSLGR30CL | LSI does not recommend using dichroic color filters with lamps or fixtures that have beam spreads greater than 40° because a secondary color aura is created by the wide angular transmitted wavelengths that are different than the desired color wavelength. | 2003 | Hot Pink | 11 |
| C | 4 3/4" | LumeLEX® 2084, LumeLEX® 2088, SSL238, SSLCX36, SSLCX38, SSLGR38CL | Since there is mainly transmission and reflection of the color wavelengths by the dichroic filter and very little absorption, the dichroic filter can be used with many high temperature lights that normally would not accept color filters. | 2004 | Pale Pink | 55 |
| | | | | 2010 | Deep Magenta | 29 |
| | | | | 2011 | Lavender | 24 |
| | | | | 2012 | Vivid Magenta | 31 |
| | | | | 2013 | Lavender Accent | 48 |
| | | | | 2014 | Lilac | 37 |
| | | | | 2015 | Purple Fusion | 12 |
| | | | | 2020 | Sky Blue | 39 |
| | | | | 2021 | Sea Blue | 39 |
| | | | | 2022 | Cyan | 33 |
| | | | | 2023 | Light Blue Green | 30 |
| | | | | 2024 | Primary Blue | 24 |
| | | | | 2025 | Medium Red Blue | 15 |
| | | | | 2026 | Deep Purple | 16 |
| | | | | 2027 | Peacock Blue | 53 |
| | | | | 2028 | Mediterranean Blue | 20 |
| | | | | 2029 | Boost Blue | 51 |
| | | | | 2040 | Light Yellow Green | 64 |
| | | | | 2041 | Fern Green | 47 |
| | | | | 2042 | Turquoise | 35 |
| | | | | 2043 | Primary Green | 31 |
| | | | | 2044 | Industrial Green | 64 |
| | | | | 2050 | Yellow | 80 |
| | | | | 2051 | Amber | 71 |
| | | | | 2052 | Amber Blush | 38 |
| | | | | 2053 | Bastard Amber | 71 |
| | | | | 2054 | Goldenrod | 63 |
| | | | | 2055 | Bright Straw | 56 |
| | | | | 2060 | Medium Orange | 51 |
| | | | | 2061 | Orange | 44 |
| | | | | 2070 | Flame Red | 27 |
| | | | | 2071 | Primary Red | 25 |