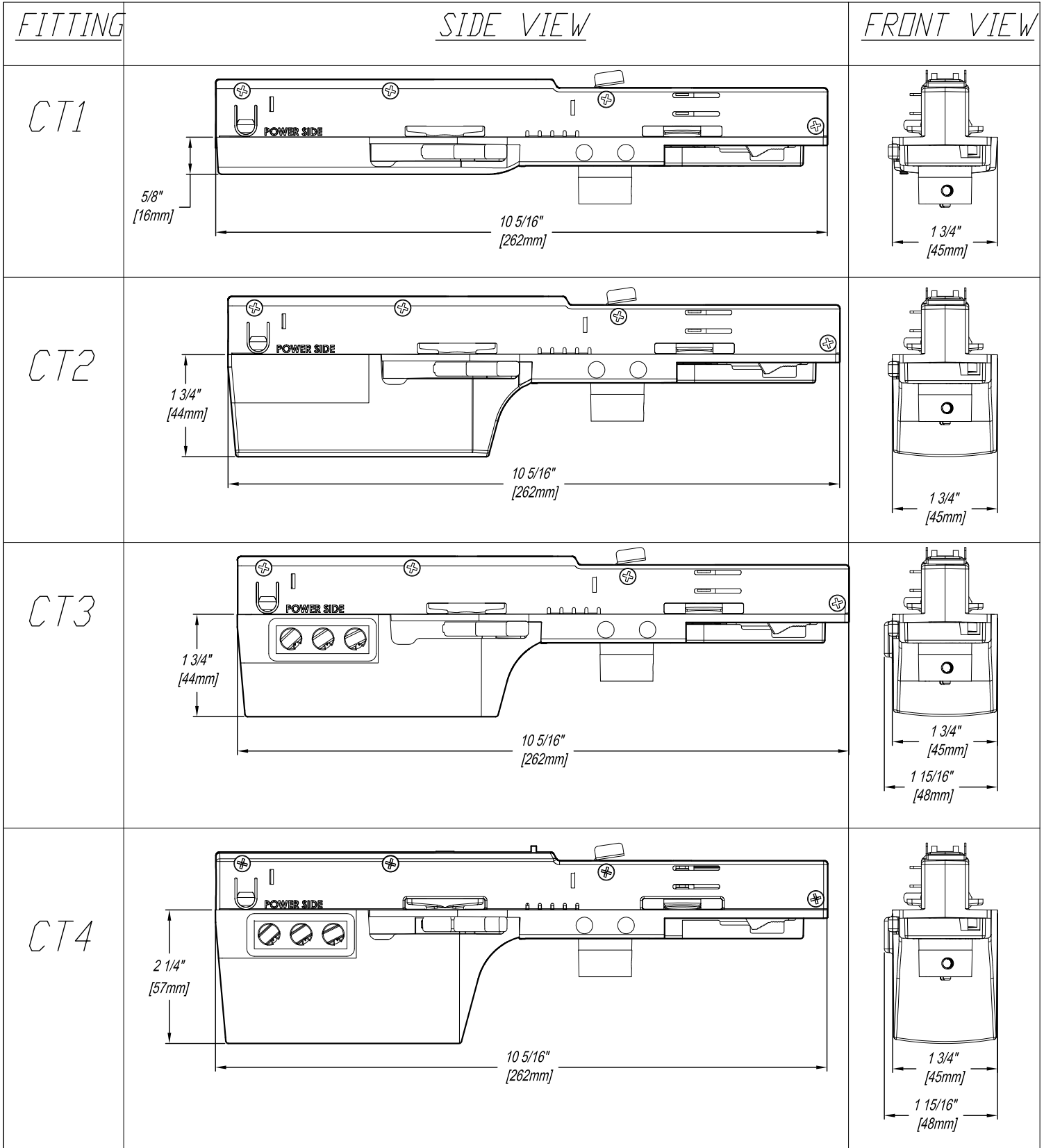


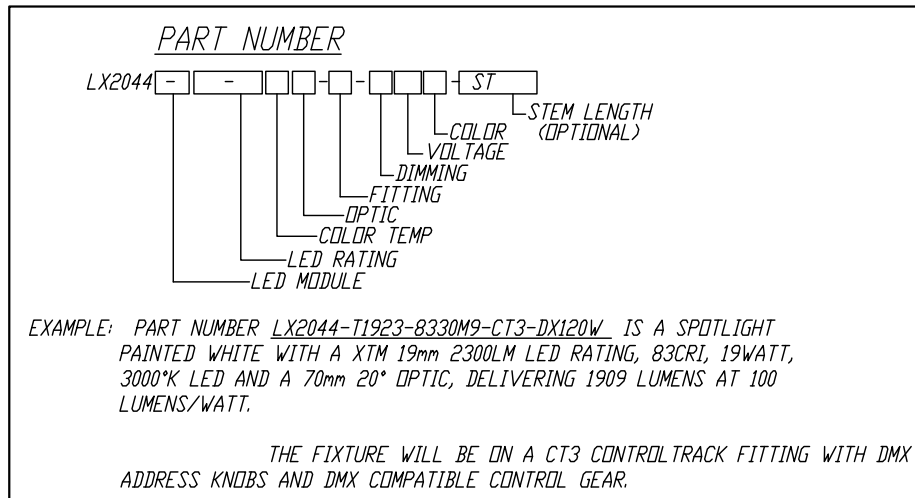


Rev.	ECO	By	Date	App.	Description
F	7072	VA			RELEASED FOR MARKETING



T19 & TS9 = XICATO				L19 & L25 = LUMENETIX				S15 & S09 = DIM TO WARM				
Fixture	0-10	DMX	Lutron EcoSystem	Fixture	0-10	DMX	Lutron EcoSystem	BlueTooth (IOS)	Fixture	0-10	DMX	Lutron EcoSystem
LX2030	CT2	CT4		LX2030	CT2	CT2		CT2	LX2030	CT2		
LX2031	CT2	CT4		LX2031	CT2	CT2		CT2	LX2031			
LX2038	CT2	CT4		LX2038	CT2	CT2		CT2	LX2038	CT2		
LX2044	CT1	CT3		LX2044	CT1	CT1		00	LX2044	CT1		
LX2047	CT1	CT3		LX2047	CT1	CT1		00	LX2047			
LX2048	CT1	CT3		LX2048	CT1	CT1		00	LX2048	CT1		
LX2060	CT1	CT3	CT1	LX2060	CT1	CT1		00	LX2060	CT1		CT1
LX2084	CT1	CT3	CT1	LX2084	CT1	CT1	CT1	00	LX2084	CT1		CT1
LX2087	CT1	CT3	CT1	LX2087	CT1	CT1	CT1	00	LX2087			
LX2088	CT1	CT3	CT1	LX2088	CT1	CT1	CT1	00	LX2088	CT1		CT1

SUPERSPOT (ZE [] and LP4)				ZOOM, BP, UV, LPW8			
Fixture	0-10	DMX	Lutron EcoSystem	Fixture	0-10	DMX	Lutron EcoSystem
LP1	CT1	CT3		LZ ZOOM	CT2	CT4	
LP2	CT1	CT3	CT1	LPW8	CT1	CT3	
LP4	CT1	CT1		BPM	CT1	CT3	
LX2020	CT2	CT4		UV8	CT1	CT3	
LX2030	CT2	CT4		UV90	CT1	CT3	CT1
LX2038	CT2	CT4		UV1560	CT1	CT3	CT1
LX2044	CT1	CT3					
LX2048	CT1	CT3					



CONFIDENTIAL—PROPRIETARY INFORMATION. THE INFORMATION HEREIN IS PROTECTED UNDER COPYRIGHT AND IS OF A PROPRIETARY NATURE AND IS SUBMITTED IN CONFIDENCE FOR USE BY OUR CLIENTS ONLY. UNAUTHORIZED REPRODUCTION, PUBLICATION, DISTRIBUTION OR DISSEMINATION IN WHOLE OR IN PART, IS EXPRESSLY PROHIBITED. THE INFORMATION CONTAINED HEREIN IS AND REMAINS THE PROPERTY OF LIGHTING SERVICES INC AND RECEIPT OR POSSESSION OF THIS INFORMATION CONFERS NO RIGHT IN OR LICENSE TO USE OR TO DISCLOSE TO OTHERS THE SUBJECT MATTER CONTAINED HEREIN FOR ANY BUT AUTHORIZED PURPOSES. COPYRIGHT LIGHTING SERVICES INC ALL RIGHTS RESERVED.

Title		Type		Description	
				LSI CONTROL TRACK FITTING LAYOUT	
Drawn by	Date	Checked by	Date	Scale	Sheet
VA	10/24/17	JC	11/01/17	NONE	1 OF 1
Lighting Services Inc 2 Holt Drive Stony Point, NY 10980-1996 Tel: 845-942-2800 www.LightingServicesInc.com				Drawing No.	Rev
				SK-00137	F