

LP2 SERIES 120/277V • LED SUPERSPOT



Shown with optional cross baffle accessory

This versatile spotlight creates a high intensity shaft of light that is perfect for long-throw applications.

- 4° optic produces 180,000 CBCP with 2180 lumens at 30 watts
- System efficiency up to 66 lumens/watt
- Exceeds ANSI specifications by maintaining extremely tight color consistency over the life of the fixture
- Tested to LM79 and LM80 Protocols
- 50,000 hour life to 70% lumen output, L₇₀ at 95°F max ambient
- Hidden integral electronic driver, compatible with trailing edge electronic low voltage dimmers (dimnable to 5%)
- Optional addressing and control of fixture using LumenTalk™, through DMX, Triac, ELV or 0-10V panels, and dimmable to 1%
- Choice of beam spread (fixed optics)
- Color Rendering Index (CRI) 90+
- Color consistency, 2 MacAdam ellipse
- No UV or IR emissions; no mercury or lead
- On/off safety switch (on most mounting types)
- Field replaceable, connector less LED module
- Sturdy aluminum housing
- Self locking vertical and horizontal focusing
- Internal multiple accessory clips accept E size LSI gels and accessories
- Finishes: LSI Black, White, and Silver
- Fixture weight: 5 lbs

MOUNTING OPTIONS

LP2-XXXXX-XXXXXX-00-TEXXXX

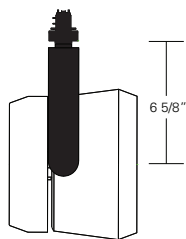
Lexan fitting for 1 and 2 circuit LSI track. With On/Off switch.

LP2-XXXXX-XXXXXX-0E-EDXXXX

Lexan fitting with integral dimmer (for use with ED dimming driver 10%)

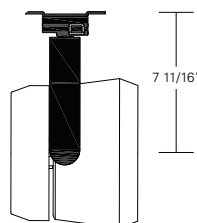
LP2-XXXXX-XXXXXX-LT-LTXXXX

Lexan fitting with LumenTalk dimmer (for use LT dimming driver (<1%))



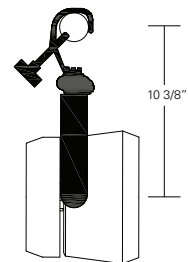
LP2-XXXXX-XXXXXX-2G-XXXXXX

Universal fitting for Unistrut Systems and any screw or bolt-up applications. With switch, 6-foot 3-wire grounding cord and NEMA 5-15P plug.



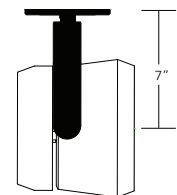
LP2-XXXXX-XXXXXX-3G-XXXXXX

C-clamp for pipes from 5/8" to 2" O.D. With switch, 6-foot 3-wire grounding cord and NEMA 5-15P plug.



LP2-XXXXX-XXXXXX-5A-XXXXXX

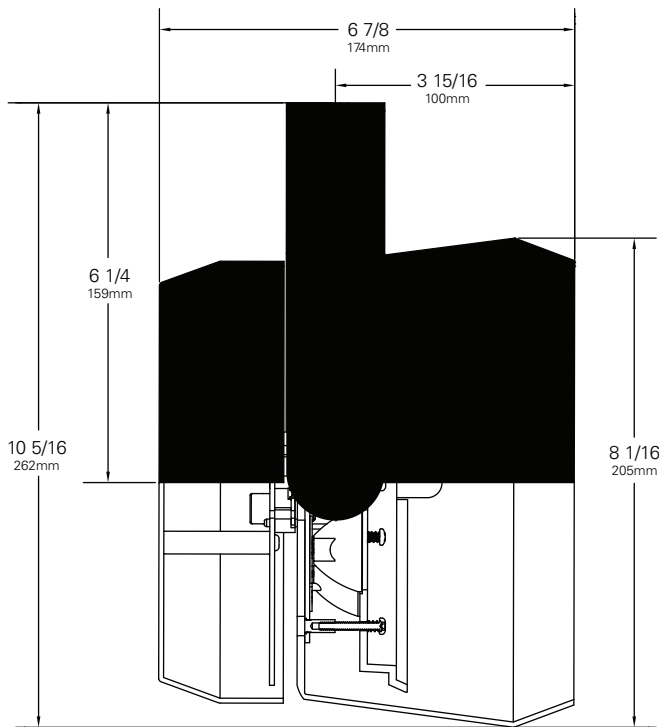
Canopy for permanent mounting on standard 4" octagonal junction boxes.



Other Options (Consult Factory):

- Custom color, RAL palette
- Security/Worklite Fixture, add suffix **-EF** (track) mounting option only.

LP2 SERIES 120/277V • LED SUPERSPOT



ORDERING INFORMATION

- Choose the desired LED Module (**ZE8**) for 8 LED Array
- Choose the numeric code to designate the desired LED Rating
Lumens/CRI/Wattage (22-90) for 2180/90/30
- Choose the numeric code to designate the desired **Color Temperature (27)** for 2700K **(30)** for 3000K **(35)** for 3500K
 For other CCT including (RGBW) and (DYNW) consult factory
- Use the following numeric code to designate the **Optic (04)** for 35mm/4° **(12)** for 35mm/12° **(25)** for 35mm/25°
- Select your **Mounting Option (00)** Track Fitting **(0E)** Track Fitting with Integral Dimmer **(LT)** Lumentalk Fitting **(2G)** Unistrut Fitting **(3G)** C-clamp Fitting **(5A)** Canopy Fitting
- Choose other fixture Options:
 - Coiled Cord is available only with **2G** and **3G** mounting options. Change 2G to 2C and 3G to 3C. (When a coiled cord is not specified, a straight cord is provided.)
- Choose the letter code for **Dimming Type (TE)** Trailing Edge (ELV Reverse Phase) (5%) **(ED)** Integral Dimming (10%) (0E & 5A fitting only) **(LT)** Lumentalk (<1%) (LT fitting only) **(10)** 0-10V (10%) (5A fitting only) **(DX)** DMX (0%) **(L2)** Lutron Hilume (2-Wire phase control) (<1%) LTE Forward phase control (120V only) **(L3)** Lutron Hilume (3 or 4 control wires) (<1%) 1 orange wire for hot dim 2 purple wires for digital/Eco-System L3D (Canopy Mount only)
- Choose the desired **Voltage: (120)** for 120V **(230)** for 220-240V **(277)** for 277V
- Choose a **Finish** for your fixture: Black **(B)** White **(W)** Silver **(S)**
 Example:

LP2 - ZE8 22-90 30 04 - 00 - TE 120 B
FIXTURE LED MODULE LUMENS/CRI/WATTAGE COLOR TEMP OPTIC MOUNTING OPTION DIMMING VOLTAGE COLOR

- Don't forget your Accessories!

DRIVER TYPE (Electronic)

Input Power (A) - 120V	0.26
Input Power (A) - 277V	0.11
Wattage	30
Power Factor - 115V	0.95

Chromaticity Specifications

LED	R _a -CRI	R _f -Fidelity	R _g -Gamut Area
ZE8	90	92	102

ACCESSORIES

- **Color and Spread Gels Size E (0.020" thick)**
- **Beam Softener Gel - R101-E (20% Light Reduction)**
- **Cross Baffle CRSBFFL LP2**
- **Louver Hex EB**
- **Backer Ring E (Required for Gels)**
- **LP2 Holder (External Accessory Cartridge)**
- **Hood LP2***
- **4-Way Barndoor LP2***

* LP2 Holder required for use with hood LP2 and barndoor LP2.

LP2 SERIES • PERFORMANCE

The performance characteristics of the LP SuperSPOT family of products can be customized based on the LED module and the optic selected.

Each available LED module is defined by four characteristics – the color rendering index (CRI), the correlated color temperature (CCT), the power that it uses (watts), its “available lumens” and beam spread. Note that available lumens is a theoretical value that represents the light output of the module on its own – no fixture or optic attached.

In the LSI part number, the LED module is specified with a letter and a number that immediately follow the product series number. For example, in the part number LP2-ZE822-903004-00-TE120B, the “ZE822-903004” represents an LED module with an output of 2180 lumens, a CRI of 90, a power usage of 30 watts, color temperature of 3000K and a 4-Degree beam.

Additional parameters, such as Center Beam Candle Power (CBCP), Delivered Lumens, and Efficiency (Lumens per Watt) are all shown in a table that is organized by LED module and optic combination.

CBCP = Center Beam Candle Power			
LED Module	Optic (Reflector)		
Lumens/CRI/Wattage	04°	12°	25°
2180/90/30	180000	33000	9000

Delivered Lumens			
LED Module	Optic (Reflector)		
Lumens/CRI/Wattage	04°	12°	25°
2180/90/30	990	1980	1900

Efficiency = Lumens Per Watt			
LED Module	Optic (Reflector)		
Lumens/CRI/Wattage	04°	12°	25°
2180/90/30	33	66	63

LED Module Lumens/CRI/Wattage SKU Code	
Nominal Fixture Power (+/- 20%), Watts	30
Maximum Inrush Current Amps	10
Minimum Power Factor	0.92

Inrush current is instantaneous current drawn by the LED only when fixture is initially powered on or instantaneously changed from full dim to full bright. For more details see Dimming Application Sheet, IS-0119.

LP2 SERIES • PHOTOMETRIC DATA

PHOTOMETRIC DATA

LP2 Series

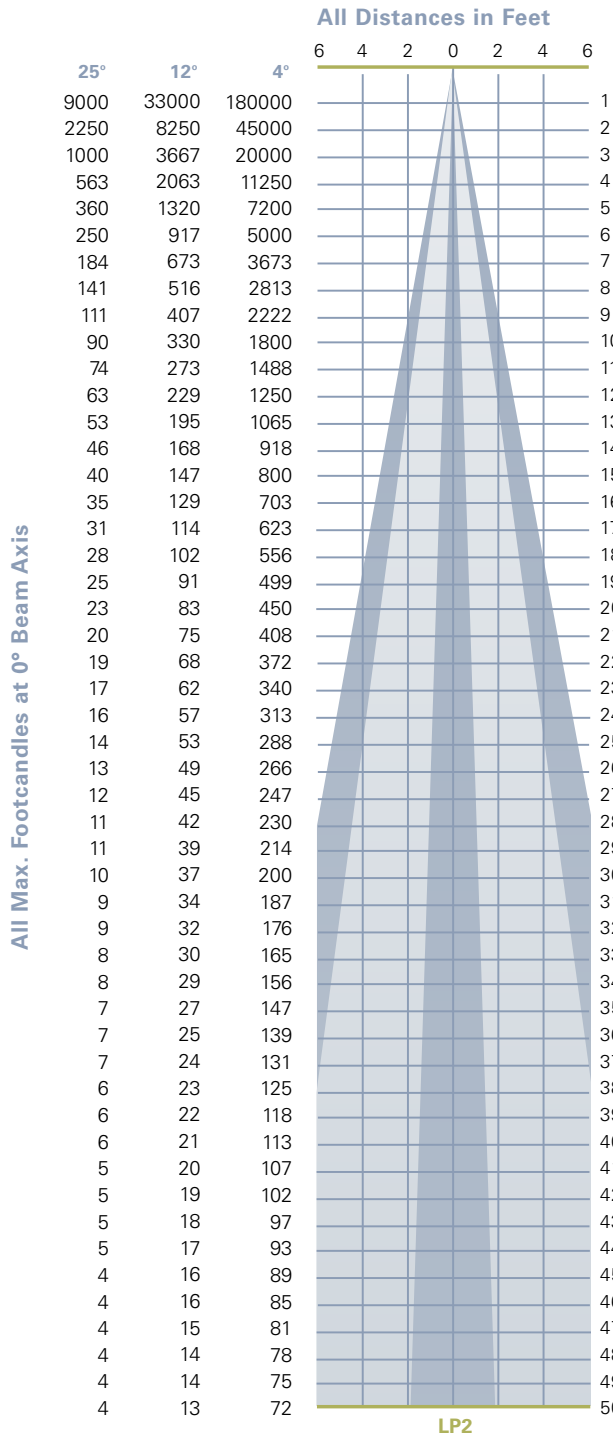
Beam Spread (minimum) **4°**
 Center Beam Candlepower **180,000**
 CRI **90+**

LP2 Series (preliminary)

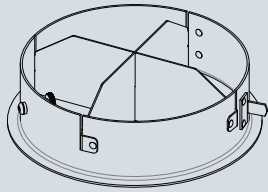
Beam Spread (minimum) **12°**
 Center Beam Candlepower **33,000**
 CRI **90+**

LP2 Series (preliminary)

Beam Spread (minimum) **25°**
 Center Beam Candlepower **9,000**
 CRI **90+**

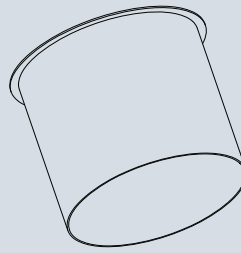


LP2 • ACCESSORIES



LP2 CROSS BAFFLE

Internal insert with cross blades. Controls spill light and glare. Black finish.



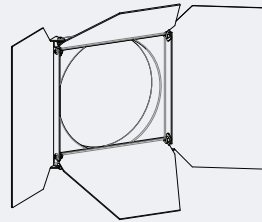
HOOD LP2*

6 inch deep hood. Interior flocking included to control spill light and glare. Black finish.



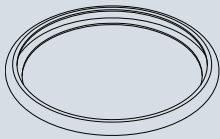
LOUVER HEX E

1/8" thick Hexcell black metal louver used for thin profile.



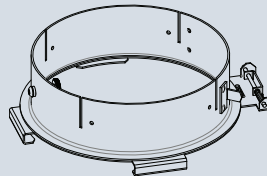
4-WAY BARNDOOR LP2*

4-way individually adjustable blades for control of light beam. Black finish.



BACKER RING E

Stainless steel ring to hold gel when no other size E accessory is being used.



EXTERNAL ACCESSORIES CARTRIDGE LP2

External Accessory cartridge to hold LP2 hood and LP2 barndoor. Black finish.

*LP2 Holder (External Accessory Cartridge) required

LP2 SERIES • GELS

As the foremost innovator in accent lighting, LSI offers a complete range of pre-cut Gels to modify the spread and color of light.



LP2 SPREAD GELS

Size: E (158 mm diameter)	Spread Gel
GELL1-E	1° Spread Gel
GELL5-E	5° Spread Gel
GELL10-E	10° Spread Gel
GELL20-E	20° Spread Gel
GELL30-E	30° Spread Gel
GELL40-E	40° Spread Gel
GELL60-E	60° Spread Gel
GELL80-E	80° Spread Gel
GELL30B5-E	30° by 5° Spread Gel
GELL40B2-E	40° by 0.2° Spread Gel
GELL60B1-E	60° by 1° Spread Gel
GELL60B10-E	60° by 10° Spread Gel
GELL75B45-E	75° by 45° Spread Gel
GELL90B60-E	90° by 60° Spread Gel
GELR101-E	Beam Softener

LP2 COLOR GELS

Size: E (158 mm diameter)	Gel Color	Size: E (158 mm diameter)	Gel Color
GELR2-E	Bastard Amber	GELR312-E	Canary
GELR7-E	Pale Yellow	GELR3204-E	Half Blue
GELR12-E	Straw	GELR331-E	Shell Pink
GELR13-E	Straw Tint	GELR383-E	Sapphire Blue
GELR14-E	Medium Straw	GELR397-E	Pale Grey
GELR21-E	Golden Amber	GELR2001-E	Storaro Red
GELR25-E	Orange Red	GELR2004-E	Storaro Green
GELR26-E	Light Red	GELR2009-E	Storaro Violet
GELR27-E	Medium Red	GELR3202-E	Full Blue
GELR57-E	Lavender	GELR3206-E	Third Blue
GELR62-E	Booster Blue	GELR3216-E	Eighth Blue (Boosts 3200K to 3300K)
GELR71-E	Sea Blue	GELR3318-E	Tough 1/8 Minusgreen
GELR72-E	Azure Blue	GELR3410-E	Roscosun (1/8 CTO) (Reduces 5500K to 4900K)
GELR91-E	Primary Green	GELR3441-E	Full Straw (CTS)
GELR97-E	Light Grey	GELR3443-E	Quarter Straw (CTS)
GELR98-E	Medium Grey	GELR4330-E	CalColor 30 Cyan
GELR101-E	Light Frost	GELR4415-E	CalColor 15 Green
GELR104-E	Tough Silk	GELR4490-E	CalColor 90 Green
GELR119-E	Lt. Hamburg Frost	GELR4860-E	CalColor 60 Pink
GELR121-E	Blue Diffusion	GELR4890-E	CalColor 90 Pink
GELR305-E	Rose Gold	GELR4930-E	CalColor 30 Lavender