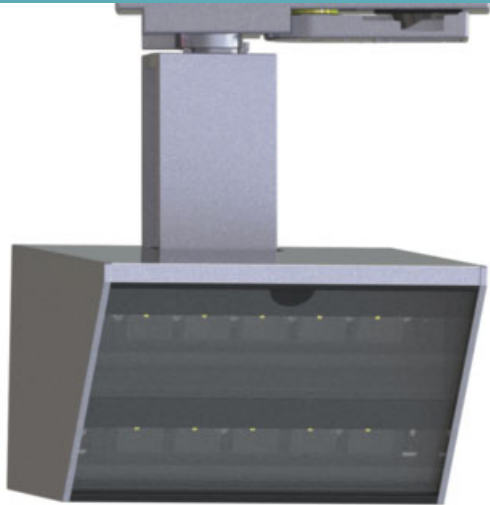


LPW8 • 120/277V • LED WALL WASH • COB



COB LED technology produces high-quality, high-output light with a consistent, even field for the most demanding applications of museum and retail accent lighting.

- Asymmetric optic produces a wide flat field with 2725 lumens at 36 watts
- System efficiency up to 33 lumens/watt
- Exceeds ANSI specifications by maintaining extremely tight color consistency over the life of the fixture
- Tested to LM79 and LM80 Protocols
- 50,000 hour life to 70% lumen output, L₇₀ at 95°F max ambient
- Hidden integral electronic driver, compatible with trailing edge electronic low voltage dimmers (dimnable to 5%)
- Individual addressing and control of fixture using LumenTalk™, for DMX or 0-10V panels, and dimmable to 1%
- Integral dimmer available
- Color Rendering Index (CRI) 90+
- Color Fidelity Index (R_f) 92
- Gamut Area Index (R_g) 102
- Color consistency: 2 MacAdam ellipses
- No UV or IR emissions; no mercury or lead
- On/off safety switch (on most mounting types)
- COB LED Panel and driver are field replaceable
- Sturdy aluminum housing and integrated heat sink
- Vertical and horizontal Allen key wrench locking
- Finishes: LSI Black, White, and Silver
- Fixture weight: 4 lbs

MOUNTING OPTIONS

LPW8-XXXXX-XXXX-00-TEXXXX

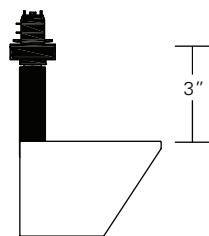
Lexan fitting for 1 and 2 circuit LSI track. With On/Off switch.

LPW8-XXXXX-XXXX-0E-EDXXXX

Lexan fitting with integral dimmer (for use with ED dimming driver 10%)

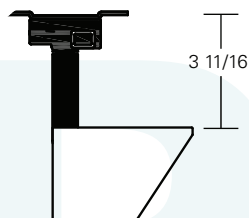
LPW8-XXXXX-XXXX-LT-LTXXXX

Lexan fitting with LumenTalk dimmer (for use LT dimming driver (<1%))



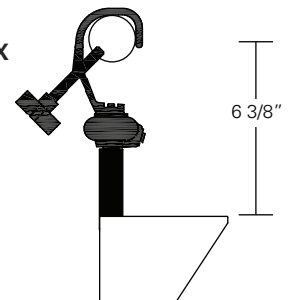
LPW8-XXXXX-XXXX-2G-XXXXXX

Universal fitting for Unistrut Systems and any screw or bolt-up applications. With switch, 6-foot 3-wire grounding cord and NEMA 5-15P plug.



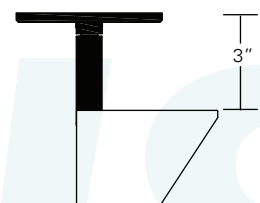
LPW8-XXXXX-XXXX-3G-XXXXXX

C-clamp for pipes from 5/8" to 2" O.D. With switch, 6-foot 3-wire grounding cord and NEMA 5-15P plug.



LPW8-XXXXX-XXXX-5A-XXXXXX

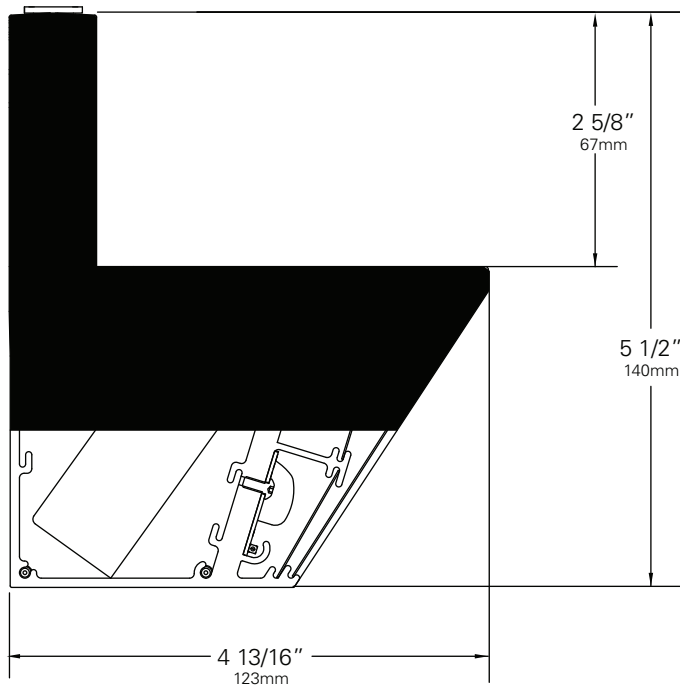
Canopy for permanent mounting on standard 4" octagonal junction boxes.



Other Options (Consult Factory):

- Custom color, RAL palette
- Security/Worklite Fixture, add suffix **-EF** (track) mounting option only.

LPW8 • 120/277V • LED WALL WASH • COB



Note: Width of LPW8 Fixture Head: 5 3/16" (132mm)

ORDERING INFORMATION

1. Choose the desired LED Module **(Z10)** for 5X2 wall wash array
2. Choose the numeric code to designate the desired LED Rating
Lumens/CRI/Wattage
(27-90) for 2725/90/36
3. Choose the numeric code to designate the desired
Color Temperature
(27) for 2700K **(30)** for 3000K **(35)** for 3500K
For other CCT, consult factory
4. Select your **Mounting Option**
(00) Track Fitting **(0E)** Track Fitting with Integral Dimmer
(LT) Lumentalk Fitting **(2G)** Unistrut Fitting
(3G) C-clamp Fitting **(5A)** Canopy Fitting
5. Choose other fixture Options:
 - Coiled Cord is available only with **2G** and **3G** mounting options. Change 2G to **2C** and 3G to **3C**. (When a coiled cord is not specified, a straight cord is provided.)
6. Choose the letter code for **Dimming Type**
(TE) Trailing Edge (ELV Reverse Phase) (5%)
(ED) Integral Dimming (10%) (0E & 5A fitting only)
(LT) Lumentalk (<1%) (LT fitting only)
(10) 0-10V (10%) (5A fitting only)
7. Choose the desired **Voltage:**
(120) for 120V **(230)** for 220-240V **(277)** for 277V
8. Choose a **Finish** for your fixture:
Black **(B)** White **(W)** Silver **(S)**
Example:

LPW8 - **Z10** **27-90** **30** - **00** - **TE** **120** **B**
FIXTURE LED MODULE LED RATING COLOR TEMP FITTING DRIVER VOLTAGE COLOR

Chromaticity Specifications

LED	R _a -CRI	R _f -Fidelity	R _g -Gamut Area
Z10	90	92	102

DRIVER TYPE (Electronic)

Input Power (A) - 120V	0.26
Input Power (A) - 277V	0.10
Wattage	30
Power Factor - 115V	0.95

ACCESSORIES

- Color Gels LPW

LPW8 • PERFORMANCE

Delivered Lumens	
Lumens/CRI/Wattage	
27-90 2725/90/36	1194

Efficiency = Lumens Per Watt	
Lumens/CRI/Wattage	
27-90 2725/90/36	33

Absolute range of values are +/- 10% of typical value, and are for all color temperatures

Lumens/CRI/Wattage Letter Code	2725/90/36 27-90
Nominal Fixture Power (+/- 20%), Watts	36
Maximum Inrush Current Amps	10
Minimum Power Factor	0.92

Inrush current is instantaneous current drawn by the LED only when fixture is initially powered on or instantaneously changed from full dim to full bright. For more details see Dimming Application Sheet, IS-0119.

LPW8 • PHOTOMETRIC DATA

For all charts on this page:

A. 3' from wall, 3' on center

B. 4' from wall, 4' on center

Lumen Package "27-90"

Delivered Lumens

CRI

1194

90

LPW8 PHOTOMETRIC DATA

Unit aimed 5' 3" horizontal Unit aimed 5' 3" horizontal

DISTANCE FROM CEILING	A				B				
	1'	2'	1'	2'	1'	2'	3'	1'	2'
11'	27	27	27	27	9	9	9	9	9
10'	28	28	28	28	11	11	11	11	11
9'	27	27	27	27	13	13	13	13	13
8'	24	23	23	24	14	14	14	14	14
7'	21	20	20	21	14	14	13	14	13
6'	19	18	18	19	12	12	12	11	12
5'	13	14	14	13	9	9	9	9	9
4'	11	11	11	11	8	8	8	8	8
3'	9	9	9	9	6	6	6	6	6
2'	7	7	7	7	5	5	5	5	5
1'	4	4	4	4	4	4	4	4	4
0'	2	2	2	2	2	2	2	2	2

LPW8 • GELS

As the foremost innovator in accent lighting, LSI offers a complete range of pre-cut Gels to modify the spread and color of light for the LPW8 Series.



LPW8 COLOR GELS

Size: LPW (5" x 3.48")	Gel Color	Size: LPW (5" x 3.48")	Gel Color
GELR2-LPW	Bastard Amber	GELR3204-LPW	Half Blue
GELR7-LPW	Pale Yellow	GELR331-LPW	Shell Pink
GELR12-LPW	Straw	GELR383-LPW	Sapphire Blue
GELR13-LPW	Straw Tint	GELR397-LPW	Pale Grey
GELR14-LPW	Medium Straw	GELR2001-LPW	Storaro Red
GELR21-LPW	Golden Amber	GELR2004-LPW	Storaro Green
GELR25-LPW	Orange Red	GELR2009-LPW	Storaro Violet
GELR26-LPW	Light Red	GELR3202-LPW	Full Blue
GELR27-LPW	Medium Red	GELR3206-LPW	Third Blue
GELR57-LPW	Lavender	GELR3216-LPW	Eighth Blue (Boosts 3200K to 3300K)
GELR62-LPW	Booster Blue	GELR3318-LPW	Tough 1/8 Minusgreen
GELR71-LPW	Sea Blue	GELR3409-LPW	Roscosun (1/4 CTO) (Reduces 3000K to 2700K)
GELR72-LPW	Azure Blue	GELR3410-LPW	Roscosun (1/8 CTO) (Reduces 5500K to 4900K)
GELR91-LPW	Primary Green	GELR3441-LPW	Full Straw (CTS)
GELR97-LPW	Light Grey	GELR3443-LPW	Quarter Straw (CTS)
GELR98-LPW	Medium Grey	GELR4330-LPW	CalColor 30 Cyan
GELR101-LPW	Light Frost	GELR4415-LPW	CalColor 15 Green
GELR104-LPW	Tough Silk	GELR4490-LPW	CalColor 90 Green
GELR119-LPW	Light Hamburg Frost	GELR4860-LPW	CalColor 60 Pink
GELR121-LPW	Blue Diffusion	GELR4890-LPW	CalColor 90 Pink
GELR305-LPW	Rose Gold	GELR4930-LPW	CalColor 30 Lavender
GELR312-LPW	Canary		