

LUMeLEX® 2026 SERIES 120/277V • LED • DIM TO WARM



Remote phosphor technology produces high quality, high output light with a consistent, even field for the most demanding applications of museum and retail accent lighting.

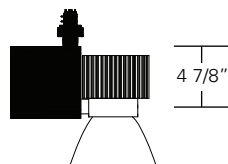
- Designed for a Dim to Warm module up to 37 watts
- Natural dimming that approximates the black body curve
- System efficiency up to 45 lumens/watt
- 36,000 hour life to 70% lumen output, L70 at 95°F max ambient
- Halogen mimicking color from 3000K to 2000K
- Color Rendering Index (CRI) of 92 min. at all dimming settings
- Color Fidelity (R_f) 92
- Gamut Area Index (R_G) 102
- Lumen output: 2500 Lumens
- Proprietary mixing optics for smooth even light
- Tested to LM79 and LM80 Protocols, TM-30 available
- Hidden integral electronic driver compatible with reverse phase (ELV compatible) dimmers down to 5%
- Field interchangeable optics (15°- 50°) modify the beam spread distribution
- Accessory holder accepts up to two size-AA LSI filters and accessories
- Integral dimmer available
- Can be specified as either Lutron-LTE (2 wire forward phase) or Lutron L3D (3 wire Hot-Dim or 4-wire Eco-System, canopy mount only), capable of dimming to 1%
- Finishes: LSI Black, White, and Silver
- Fixture weight: 3.25 lbs
- All modules are field replaceable

MOUNTING OPTIONS

Please review the **ORDERING INFORMATION** section on the next page on how to specify the following:

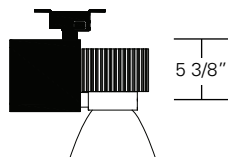
- Lumens/CRI/Wattage
- Color Temperature
- Optic - mm/beam spread

LX2026-XXXXX-XXXXXX-00-XXXXXX
Lexan fitting for 1 and 2 circuit LSI track. With On/Off switch.



LX2026-XXXXX-XXXXXX-0E-EDXXXX
Lexan fitting with integral dimmer (for use with ED dimming driver 20%).

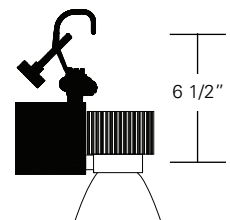
LX2026-XXXXX-XXXXXX-LT-LTXXXX
Lexan fitting with LumenTalk dimmer (for use with LT dimming driver (<1%).



LX2026-XXXXX-XXXXXX-2G-XXXXXX
Universal fitting for Unistrut Systems and any screw or bolt-up applications. With switch, 6-foot 3-wire grounding cord and NEMA 5-15P plug.

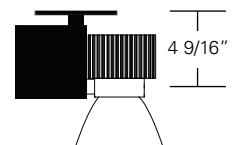
LX2026-XXXXX-XXXXXX-3G-XXXXXX

C-clamp for pipes from 5/8" to 2" O.D. With switch, 6-foot 3-wire grounding cord and NEMA 5-15P plug.



LX2026-XXXXX-XXXXXX-5A-XXXXXX

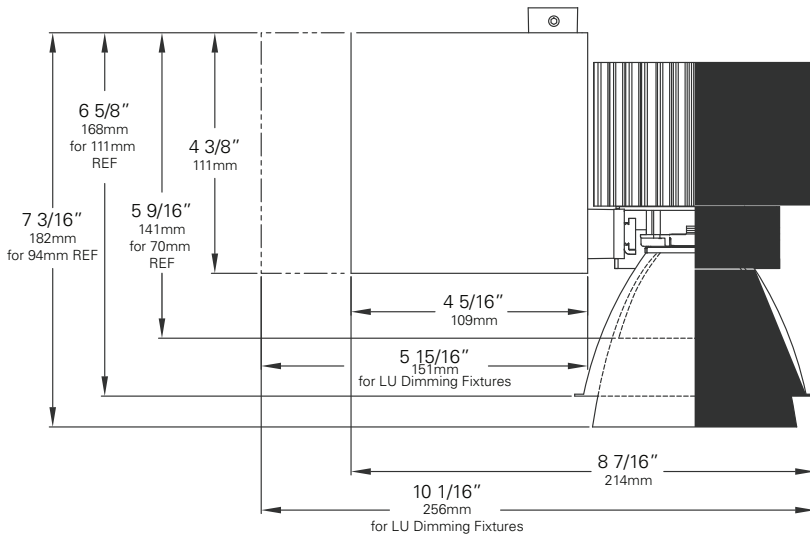
Canopy for permanent mounting on standard 4" octagonal junction boxes.



Other Options (Consult Factory):

- Stems, specify length (4"– 48")
- Custom color, RAL palette
- Security/Worklite Fixture, use **—EF** as mounting option (track mount only)

LUMeLEX® 2026 SERIES 120/277V • LED • DIM TO WARM



ORDERING INFORMATION

Dim to Warm Fixture

- Choose the desired LED Module **(D15)** for Dim to Warm (15mm)
- Choose the numeric code to designate the desired LED Rating **Lumens/CRI/Wattage (25-92)** for 2500/92/37
- Choose the code to designate the desired **Color Temperature (DW)** for 3000K to 2000K
- Use the following alpha-numeric code to designate the **Optic (W2)** for 72mm/20° **(WR)** for 70mm/15° (Field Reducer) **(W3)** for 72mm/30° **(W4)** for 72mm/40° **(W5)** for 72mm/50°
- Select your **Mounting Option (00)** Track Fitting **(0E)** Track Fitting with Integral Dimmer **(LT)** Lumentalk Fitting **(2G)** Unistrut Fitting **(3G)** C-clamp Fitting **(5A)** Canopy Fitting
- Choose other fixture Options:
 - Coiled Cord is available only with **2G** and **3G** mounting options. Change 2G to **2C** and 3G to **3C**. (When a coiled cord is not specified, a straight cord is provided.)
- Choose the letter code for **Dimming Type:**
 - (TE)** Trailing Edge (Reverse Phase) (5%)
 - (ED)** Integral Dimming (10%) (0E & 5A fitting only)
 - (LT)** Lumentalk (<1%) (LT fitting only)
 - (10)** 0-10V (10%) (5A fitting only)
 - (L2)** Lutron Hilume (2-Wire phase control) (<1%)
LTE Forward phase control (120V only)
 - (L3)** Lutron Hilume (3 or 4 control wires) (<1%)
1 orange wire for hot dim
2 purple wires for digital/Eco-System L3D (5A Fitting only)
- Choose the desired **Voltage:** **(120)** for 120V **(230)** for 220-240V **(277)** for 277V
- Choose a **Finish** for your fixture:
Black **(B)** White **(W)** Silver **(S)**

Example:

LX2026 - D15 18-92 DW W2 - 00 - TE 120 B

FIXTURE LED MODULE LED RATING COLOR TEMP OPTIC FITTING DIMMING VOLTAGE FINISH

- Don't forget your Accessories!

ACCESSORIES

Note: suffix "W" = 72mm diameter reflector;

- LX2024-Holder**
- Hood 2IN AA***
- ANG Hood 2IN AA***
- Backer Ring AAB***
- LX2024 Barndoor**
- Louver Hex AA***
- Spread Lens AA990, AA992, AA995, AA996***
- Beam Softener AA998***
- Light Blocking Screens AA801S, AA802S, AA803S***
- Spread Gels AA**

- LX-WRD-REF (70mm/15°) Field Reducer**
- LX-W20-REF (72mm/20°)**
- LX-W30-REF (72mm/30°)**
- LX-W40-REF (72mm/40°)**
- LX-W50-REF (72mm/50°)**

* LX2024-Holder or Barndoor required for use with size AA accessories.

Chromaticity Specifications

LED	R _a -CRI	R _f -Fidelity	R _g -Gamut Area
D15	92	93	104

LUMELX® 2026 SERIES • DIM TO WARM PERFORMANCE

The performance characteristics of the Dim to Warm LumeLEX family of products can be customized based on the optic (reflector) selected.

The behavior of the Dim to Warm modules links the color of the light to the dimmed output of the fixture just like a halogen or incandescent source. Therefore the four characteristics defining the color — the color rendering index (CRI), the correlated color temperature (CCT) range, the power that it uses (watts), and its “available lumens” – are linked to the dim setting. Note that available lumens is a theoretical value that represents the light output of the module on its own – no fixture or optic attached. Also note that the CRI of this fixture is a minimum of 92 at any dimming setting.

In the LSI part number, the LED module is specified with a letter and a number that immediately follow the product series number. For example, in the part number LX2026-D1525-92DWW2-00-TE120B, the “D1525-92DW” represents a Dim to Warm LED module with an output of 2500 lumens, a CRI of 92, a power usage of 37 watts and a color temperature range of 2800K – 2000K that is tied to the dimming setting.

The available optics (reflectors) are characterized by size, beam angle, and in some cases the characteristics of the field angle (narrow or wide). The optic is specified by the two characters that follow the LED designation in the part number. For example, the “W2” in LX2026-D1525-92DWW2-00-TE120B is a 70mm diameter optic that has a 20-Degree beam.

Additional parameters, such as Center Beam Candle Power (CBCP), Delivered Lumens, and Efficiency (Lumens per Watt) are all shown in a table that is organized by LED module and optic combination.

CBCP = Center Beam Candle Power					
LED Module	Optic (Reflector)				
Lumens/CRI/Wattage	W2	WR	W3	W4	W5
2500/92/37	9280	6960	5304	3777	2894

Delivered Lumens					
LED Module	Optic (Reflector)				
Lumens/CRI/Wattage	W2	WR	W3	W4	W5
2500/92/37	1597	639	1530	1548	1648

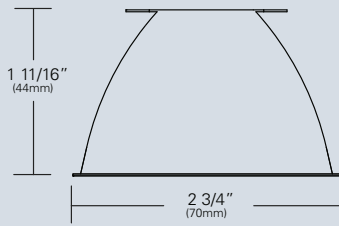
Efficiency = Lumens Per Watt					
LED Module	Optic (Reflector)				
Lumens/CRI/Wattage	W2	WR	W3	W4	W5
2500/92/37	43	17	41	42	45

Absolute range of values are +/- 10% of typical value, and are for all color temperatures

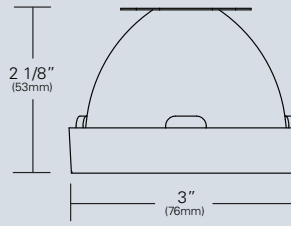
LED Module Lumens/CRI/Wattage SKU Code	2500/92/37 25-92
Nominal Fixture Power (+/- 20%), Watts	37
Maximum Inrush Current Amps	10
Minimum Power Factor	0.92

Inrush current is instantaneous current drawn by the LED only when fixture is initially powered on or instantaneously changed from full dim to full bright. For more details see Dimming Application Sheet, IS-0119.

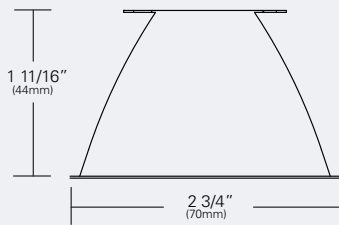
LUMELX® 2026 SERIES • DIM TO WARM OPTICS



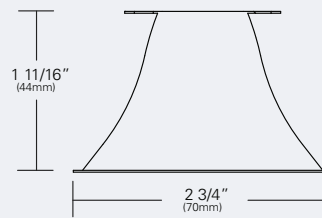
LX-W20-REF (W2)
(72mm/20°)
 Faceted reflectively coated metal optic. Tool-less twist and lock installation.
 Black (B), White (W), or Aluminized (CLR) finish.



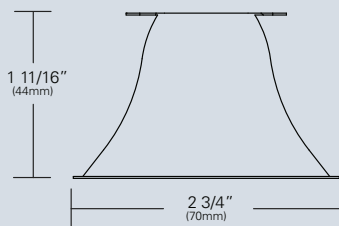
LX-WRD-REF (WR)
(70mm/15°)
 Field reducer. Proprietary field reducing baffle (black) with aluminized reflector. Reflector can be painted with Black (B), White (W), or Aluminized (CLR) finish. Tool-less, twist and lock installation.



LX-W30-REF (W3)
(72mm/30°)
 Faceted reflectively coated metal optic. Tool-less twist and lock installation.
 Black (B), White (W), or Aluminized (CLR) finish.



LX-W40-REF (W4)
(72mm/40°)
 Faceted reflectively coated metal optic. Tool-less twist and lock installation.
 Black (B), White (W), or Aluminized (CLR) finish.



LX-W50-REF (W5)
(72mm/50°)
 Faceted reflectively coated metal optic. Tool-less twist and lock installation.
 Black (B), White (W), or Aluminized (CLR) finish.

LUMeLEX® 2026 SERIES • DIM TO WARM PHOTOMETRIC DATA

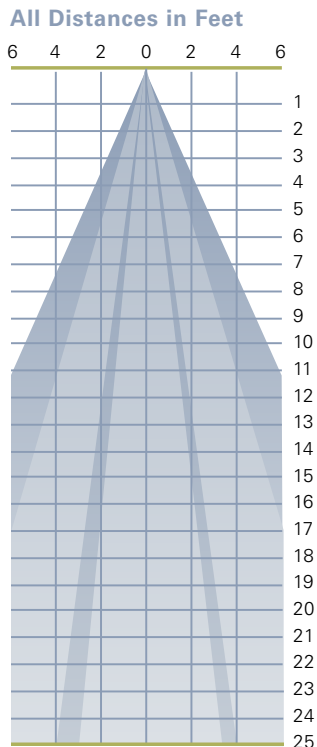
LED RATING: 25-92

WR-70mm DIA Optic Beam Spread (minimum) (FR: Field Reducer) Center Beam Candlepower CRI	15° 6960 92
W2-72mm DIA Optic Beam Spread (minimum) Center Beam Candlepower CRI	20° 9280 92
W3-72mm DIA Optic Beam Spread (minimum) Center Beam Candlepower CRI	30° 5304 92
W4-72mm DIA Optic Beam Spread (minimum) Center Beam Candlepower CRI	40° 3777 92
W5-72mm DIA Optic Beam Spread (minimum) Center Beam Candlepower CRI	50° 2894 92

LED RATING: 25-92

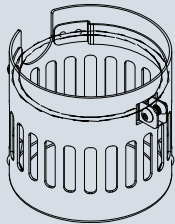
	W5	W4	W3	W2	WR	All Distances in Feet	
	(50°)	(40°)	(30°)	(20°)	(15°) FR	6	4
	2894	3777	5304	9280	6960	6	4
	724	944	1326	2320	1740	2	4
	322	420	589	1031	773	0	6
	181	236	332	580	435		
	116	151	212	371	278		
	80	105	147	258	193		
	59	77	108	189	142		
	45	59	83	145	109		
	36	47	65	115	86		
	29	38	53	93	70		
	24	31	44	77	58		
	20	26	37	64	48		
	17	22	31	55	41		
	15	19	27	47	36		
	13	17	24	41	31		
	11	15	21	36	27		
	10	13	18	32	24		
	9	12	16	29	21		
	8	10	15	26	19		
	7	9	13	23	17		
	7	9	12	21	16		
	6	8	11	19	14		
	5	7	10	18	13		
	5	7	9	16	12		
	5	6	8	15	11		

All Max. Footcandles at 0° Beam Axis



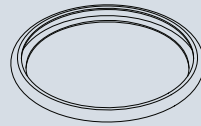
Photometric Data based on LED Rating: 25-92 (2500 Lumens/92CRI/37 watts)

LUMELX 2026 • ACCESSORIES



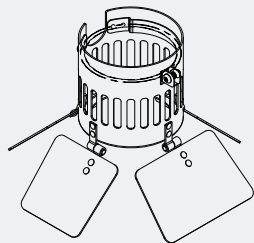
LX2024-HOLDER

External holder for size AA accessories and LXM Gels. Specify finish.



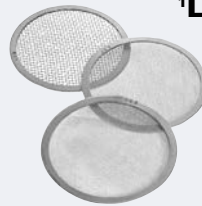
BACKER RING AA

Aluminum ring to hold gel when no other size AA accessories are being used.



LX2024 BARNDOOR

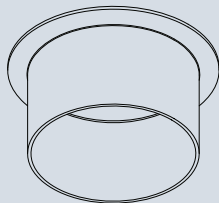
External holder with 4-way individually adjustable blades for control of light beam. Holds size AA accessories and LXM Gels. Specify finish.



1 LIGHT BLOCKING SCREENS AA

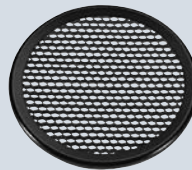
Stainless steel mesh screens used alone or in combinations will block from approximately 20% to 90% of the transmitted light without changing color temperature of the light. (LX2024-Holder or LX2024 Barndoor required for use with size AA Light Blocking Screens)

No.	% of Light Blocked
AA801S	20
AA802S	30
AA803S	40



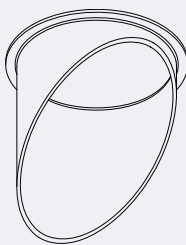
HOOD 2IN AA

2 inch deep hood (LX2024-Holder or LX2024 Barndoor required for use with Hood 2IN AA)



LOUVER HEX AA

1/8" thick Hexcell black metal louver used for thin profile. (LX2024-Holder or LX2024 Barndoor required for use with LOUVER HEX AA)



ANG HOOD 2IN AA

2 inch deep angled hood (LX2024-Holder or LX2024 Barndoor required for use with ANG Hood 2IN AA)



SPREAD LENSES AND BEAM SOFTENER

No.	Description	% of Light Transmission
990	Spread Lens/Clear	83 (5°X 50°)
992	Spread Lens/Clear	85 (5°X 30°)
995	Spread Lens/Clear	83 (50°X 50°)
996	Spread Lens/Clear	86 (45°X 50°)
998	Beam Softener/Clear	80 (45°X 45°)

(LX2024-Holder or LX2024 Barndoor required for use with size AA Spread Lens/Beam Softener)

1. Figures vary based upon LED module/optic being used and relationship of screen(s) to LED module/optic and to each other.

LUMeLEX® 2026 SERIES • GELS

As the foremost innovator in accent lighting, LSI offers a complete range of pre-cut Gels to modify the spread and color of light for the LumeLEX LED Series.



LumeLEX® SPREAD GELS

Size: AA (76 mm diameter)	Spread Gel
GEL-L1-AA	1° Spread Gel
GEL-L5-AA	5° Spread Gel
GEL-L10-AA	10° Spread Gel
GEL-L20-AA	20° Spread Gel
GEL-L30-AA	30° Spread Gel
GEL-L40-AA	40° Spread Gel
GEL-L60-AA	60° Spread Gel
GEL-L80-AA	80° Spread Gel
GEL-L30B5-AA	30° by 5° Spread Gel
GEL-L40B2-AA	40° by 0.2° Spread Gel
GEL-L60B1-AA	60° by 1° Spread Gel
GEL-L60B10-AA	60° by 10° Spread Gel
GEL-L75B45-AA	75° by 45° Spread Gel
GEL-L90B60-AA	90° by 60° Spread Gel
GEL-R101-AA	Beam Softener

* LX2024 Holder and Backer Ring AA require to hold gels when no other rimmed "AA" accessories are used.