

# LUMeLEX® 2026 SERIES 120/277V • LED • XTM 19MM



**Remote phosphor technology produces high quality, high output light with a consistent, even field for the most demanding applications of museum and retail accent lighting.**

- Designed for the most versatile Xicato XTM 19mm LED module up to 33 Watts
- Extremely tight color consistency (less than 2 MacAdam Ellipses)
- System efficiency up to 101 lumens/watt
- Backed by Xicato's Five Year Color Consistency and Lumen Maintenance Warranty
- 50,000 hour life to 70% lumen output, L70 at 95°F max ambient
- Choice of color temperature
- Color Rendering Index (CRI) of either 98 (high) or 83+ (standard)
- Color Fidelity (R<sub>f</sub>) 96 (high) or 78 (standard)
- Gamut Area Index (R<sub>g</sub>) 103 (high) or 101 (standard)
- Choice of lumen outputs (delivered lumens)
- Tested to LM79 and LM80 Protocols, TM-30 available
- Hidden integral electronic driver compatible with reverse phase (ELV compatible) dimmers down to 5%
- Field interchangeable optics (15°- 60°) modify the beam spread distribution
- Accessory holder accepts up to two size-AA LSI filters and accessories
- Integral dimmer available
- Can be specified as either Lutron-LTE (2 wire forward phase) or Lutron L3D (3 wire Hot-Dim or 4-wire Eco-System, canopy mount only), capable of dimming to 1%
- Finishes: LSI Black, White, and Silver
- Fixture weight: 3.25 lbs
- All modules are field replaceable

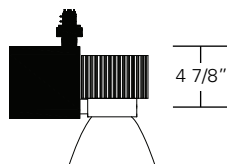


## MOUNTING OPTIONS

Please review the **ORDERING INFORMATION** section on the next page on how to specify the following:

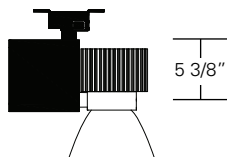
- Lumens/CRI/Wattage
- Color Temperature
- Optic - mm/beam spread

**LX2026-XXXXX-XXXXXX-00-XXXXXX**  
Lexan fitting for 1 and 2 circuit LSI track. With On/Off switch.



**LX2026-XXXXX-XXXXXX-0E-EDXXXX**  
Lexan fitting with integral dimmer (for use with ED dimming driver 20%).

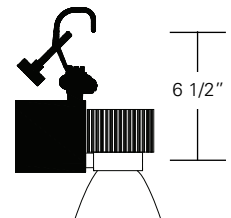
**LX2026-XXXXX-XXXXXX-LT-LTXXXX**  
Lexan fitting with LumenTalk dimmer (for use with LT dimming driver (<1%).



**LX2026-XXXXX-XXXXXX-2G-XXXXXX**  
Universal fitting for Unistrut Systems and any screw or bolt-up applications. With switch, 6-foot 3-wire grounding cord and NEMA 5-15P plug.

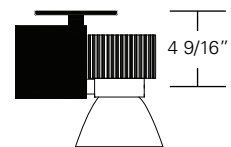
### LX2026-XXXXX-XXXXXX-3G-XXXXXX

C-clamp for pipes from 5/8" to 2" O.D. With switch, 6-foot 3-wire grounding cord and NEMA 5-15P plug.



### LX2026-XXXXX-XXXXXX-5A-XXXXXX

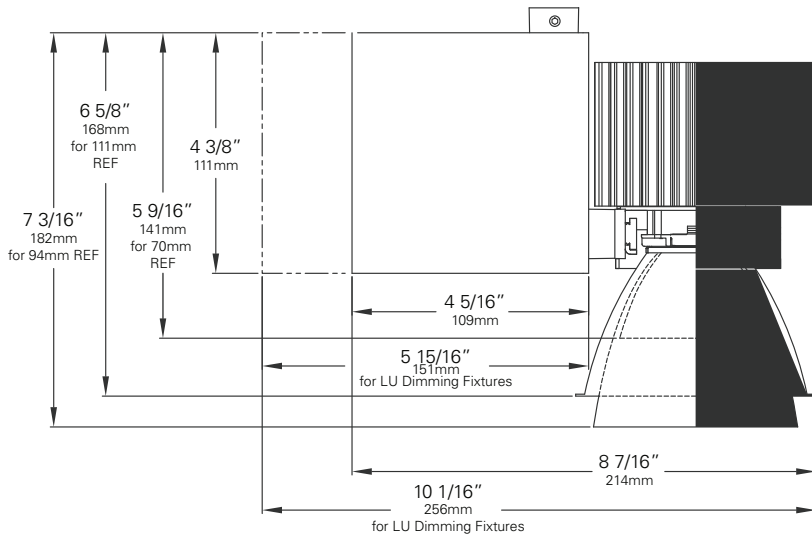
Canopy for permanent mounting on standard 4" octagonal junction boxes.



### Other Options (Consult Factory):

- Stems, specify length (4"– 48")
- Custom color, RAL palette
- Security/Worklite Fixture, use **—EF** as mounting option (track mount only)

# LUMELX® 2026 SERIES 120/277V • LED • XTM 19MM



## ACCESSORIES

Note: suffix "M" = 70mm diameter reflector; suffix "L" = 94mm diameter reflector; suffix "J" = 111mm diameter reflector

- **LX2024-Holder**
  - **Hood 2IN AA\***
  - **ANG Hood 2IN AA\***
  - **Backer Ring AAB\***
  - **LX2024 Barndoor**
  - **Louver Hex AA\***
  - **Glass Color Filters AA\***
  - **Spread Lens AA990, AA992, AA995, AA996\***
  - **Beam Softener AA998\***
  - **Light Blocking Screens AA801S, AA802S, AA803S\***
  - **Gel Holder LXM, LXL, or LXJ**
  - **Louver Hex LXM, LXL, or LXJ\*\***
- **Light Blocking Screens LXM, LXL, or LXJ: 801S, 802S, 803S\*\***
  - **Color and Spread Gels AA, LXM, LXL, or LXJ\*\***
  - **LX-WRD-REF Field Reducer (70mm/15°)**
  - **LX-M20-REF-B (70mm/20°)**
  - **LX-M90-REF (70mm/20°)**
  - **LX-M40-REF-B (70mm/35°)**
  - **LX-M80-REF (70mm/40°)**
  - **LX-M60-REF (70mm/60°)**
  - **LX-L20-REF (94mm/20°)**
  - **LX-J10-REF (111mm/15°)**
  - **LX-J30-REF (111mm/30°)**
  - **LX-J40-REF (111mm/40°)**
- \* LX2024-Holder or Barndoor required for use with size AA accessories and LXM Gels.  
 \*\* Gel Holder required for use with LXM, LXL, or LXJ accessories.

## Color Temperature & Center Point Tolerance

Color Temp	Center Point	Tolerance
2700K	2700K	+/- 40K
3000K	2950K	+/- 50K
3500K	3420K	+/- 60K
4000K	4000K	+/- 70K

## Chromaticity Specifications

LED	R <sub>a</sub> -CRI	R <sub>f</sub> -Fidelity	R <sub>g</sub> -Gamut Area
T19-TS9 - 83	83	78	101
T19-TS9 - 98	98	96	103

## ORDERING INFORMATION

### Xicato XTM 19mm Fixture

- Choose the desired LED Module (**T19**) for XTM (19mm)
- Choose the numeric code to designate the desired LED Rating **LED Module/CRI/Wattage**  
**(10-83)** for 1000/83/11      **(10-98)** for 1000/98/13  
**(13-83)** for 1300/83/15      **(13-98)** for 1300/98/20  
**(20-83)** for 2000/83/23      **(20-98)** for 2000/98/31  
**(30-98)** for 3000/98/33      **(30-83)** for 3000/83/33  
**(33-83)** for 3300/83/33      **(37-83)** for 3700/83/33
- Choose the numeric code to designate the desired **Color Temperature**  
**(27)** for 2700K      **(30)** for 3000K      **(35)** for 3500K  
**(40)** for 4000K      For other CCT, consult factory
- Use the following alpha-numeric code to designate the **Optic**  
**(WR)** for 70mm/15° (Field Reducer)  
**(M2)** for 70mm/20° (Narrow Field Angle)  
**(M9)** for 70mm/20° (Wide Field Angle)  
**(M4)** for 70mm/35° (Narrow Field Angle)  
**(M8)** for 70mm/40° (Wide Field Angle)  
**(M6)** for 70mm/60°  
**(L2)** for 94mm/20°      **(J1)** for 111mm/15°  
**(J3)** for 111mm/30°      **(J4)** for 111mm/40°
- Select your **Mounting Option**  
**(00)** Track Fitting      **(0E)** Track Fitting with Integral Dimmer  
**(LT)** Lumentalk Fitting      **(2G)** Unistrut Fitting  
**(3G)** C-clamp Fitting      **(5A)** Canopy Fitting
- Choose other fixture Options:  
 • Coiled Cord is available only with **2G** and **3G** mounting options. Change 2G to **2C** and 3G to **3C**. (When a coiled cord is not specified, a straight cord is provided.)
- Choose the letter code for **Dimming Type:**  
**(TE)** Trailing Edge (ELV Reverse Phase) (5%)  
**(ED)** Integral Dimming (0E & 5A fitting only)  
**(LT)** Lumentalk (<1%) (LT fitting only)  
**(10)** 0-10V (10%) (5A fitting only)  
**(L2)** Lutron Hilume (2-Wire phase control) (<1%)  
 LTE Forward phase control (120V only)  
**(L3)** Lutron Hilume (3 or 4 control wires) (<1%)  
 1 orange wire for hot dim  
 2 purple wires for digital/Eco-System L3D (5A fitting only)
- Choose the desired **Voltage:**  
**(120)** for 120V      **(230)** for 220-240V      **(277)** for 277V
- Choose a **Finish** for your fixture:  
 Black (**B**)      White (**W**)      Silver (**S**)

Example:

**LX2026 - T19 20-83 27 J1 - 00 - TE 120 B**  
FIXTURE LED MODULE LED RATING COLOR TEMP OPTIC FITTING DIMMING VOLTAGE FINISH

10. Don't forget your Accessories!

# LUMELX® 2026 SERIES • XICATO XTM 19MM PERFORMANCE

The performance characteristics of the LumeLEX family of products can be customized based on the LED module and the optic (reflector) selected.

Each available LED module is defined by four characteristics – the color rendering index (CRI), the correlated color temperature (CCT), the power that it uses (watts), and its “available lumens.” Note that available lumens is a theoretical value that represents the light output of the module on its own – no fixture or optic attached.

In the LSI part number, the LED module is specified with a letter and a number that immediately follow the product series number. For example, in the part number LX2026-T1920-8327J1-00-TE120B, the “**T1920-8327**” represents an LED module with an output of 2000 lumens, a CRI of 83, a power usage of 23 watts and a color temperature of 2700K.

The available optics (reflectors) are characterized by size, beam angle, and in some cases the characteristics of the field angle (narrow or wide). The optic is specified by the two characters that follow the LED designation in the part number. For example, the “**J1**” in LX2026-T1920-8327J1-00-TE120B is a 111mm diameter optic that has a 15-Degree beam.

Additional parameters, such as Center Beam Candle Power (CBCP), Delivered Lumens, and Efficiency (Lumens per Watt) are all shown in a table that is organized by LED module and optic combination.

CBCP = Center Beam Candle Power										
LED Module	Optic (Reflector)									
Lumens/CRI/Wattage	M2	WR	M4	M6	M8	M9	J1	J3	J4	L2
1000/83/11	3,270	2,490	2,180	980	1,480	3,000	6,150	2,190	1,310	4,790
1000/98/13	3,270	2,490	2,180	980	1,480	3,000	6,150	2,190	1,310	4,790
1300/83/15	4,251	3,237	2,834	1,274	1,924	3,900	7,995	2,847	1,703	6,227
1300/98/20	4,251	3,237	2,834	1,274	1,924	3,900	7,995	2,847	1,703	6,227
2000/83/23	6,540	4,980	4,360	1,960	2,960	6,000	12,300	4,380	2,620	9,580
2000/98/31	6,540	4,980	4,360	1,960	2,960	6,000	12,300	4,380	2,620	9,580
3000/98/33	9,810	7,470	6,540	2,940	4,440	9,000	18,450	6,570	3,930	14,370
3000/83/33	9,810	7,470	6,540	2,940	4,440	9,000	18,450	6,570	3,930	14,370
3300/83/29	10,791	8,217	7,194	3,234	4,884	9,900	20,295	7,227	4,323	15,807
3700/83/33	12,590	9,587	8,393	3,773	5,698	11,550	23,678	8,432	5,044	18,442

Delivered Lumens										
LED Module	Optic (Reflector)									
Lumens/CRI/Wattage	M2	WR	M4	M6	M8	M9	J1	J3	J4	L2
1000/83/11	390	220	580	720	830	830	790	800	790	860
1000/98/13	390	220	580	720	830	830	790	800	790	860
1300/83/15	507	286	754	936	1,079	1,079	1,027	1,040	1,027	1,118
1300/98/20	507	286	754	936	1,079	1,079	1,027	1,040	1,027	1,118
2000/83/23	780	440	1,160	1,440	1,660	1,660	1,580	1,600	1,580	1,720
2000/98/31	780	440	1,160	1,440	1,660	1,660	1,580	1,600	1,580	1,720
3000/98/33	1,170	660	1,740	2,160	2,490	2,490	2,370	2,400	2,370	2,580
3000/83/33	1,170	660	1,740	2,160	2,490	2,490	2,370	2,400	2,370	2,580
3300/83/29	1,287	726	1,914	2,376	2,739	2,739	2,607	2,640	2,607	2,838
3700/83/33	1,502	847	2,233	2,772	3,196	3,196	3,042	3,080	3,042	3,311

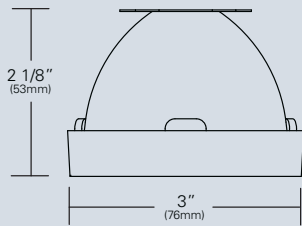
Efficiency = Lumens Per Watt										
LED Module	Optic (Reflector)									
Lumens/CRI/Wattage	M2	WR	M4	M6	M8	M9	J1	J3	J4	L2
1000/83/11	35	20	53	65	75	75	72	73	72	78
1000/98/13	30	17	45	55	64	64	61	62	61	66
1300/83/15	34	19	50	62	72	72	68	69	68	75
1300/98/20	25	14	38	47	54	54	51	52	51	56
2000/83/23	34	19	50	63	72	72	69	70	69	75
2000/98/31	25	14	37	46	54	54	51	52	51	55
3000/98/33	35	20	53	65	75	75	72	73	72	78
3000/83/33	35	20	53	65	75	75	72	73	72	78
3300/83/29	46	26	68	85	98	98	93	94	93	101
3700/83/33	46	26	68	84	97	97	92	93	92	100

Absolute range of values are +/- 10% of typical value, and are for all color temperatures

LED Module Lumens/CRI/Wattage SKU Code	1000/83/11 10-83	1000/98/13 10-98	1300/83/15 13-83	1300/98/20 13-98	2000/83/23 20-83	2000/98/31 20-98	3000/98/33 30-98	3000/83/33 30-83	3300/83/33 33-83	3700/83/33 37-83
Nominal Fixture Power (+/- 20%), Watts	11	13	15	20	23	31	33	33	33	33
Maximum Inrush Current Amps	10	10	10	10	10	10	10	10	10	10
Minimum Power Factor	0.92	0.92	0.92	0.92	0.92	0.92	0.92	0.92	0.92	0.92

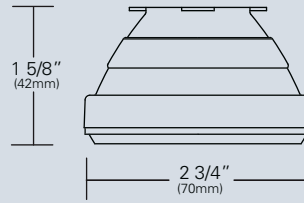
Inrush current is instantaneous current drawn by the LED only when fixture is initially powered on or instantaneously changed from full dim to full bright. For more details see Dimming Application Sheet, IS-0119.

# LUMELX<sup>®</sup> 2026 SERIES • XICATO XTM 19MM OPTICS



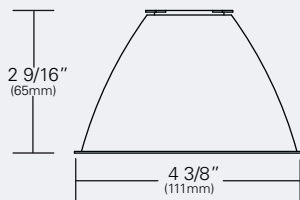
## LX-WRD-REF-CLR (WR) (70mm/15°)

Field reducer. Proprietary field reducing baffle (black). Reflector can be painted with Black (B), White (W) or Aluminized (CLR) finish. Tool-less, twist and lock installation.



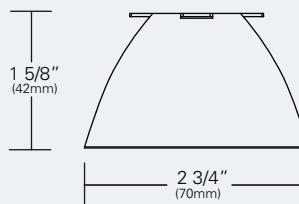
## LX-M20-REF-B (M2) (70mm/20°) (Narrow Field Angle)

Computer designed polycarbonate lens. Tool-less, twist and lock installation. Black finish.



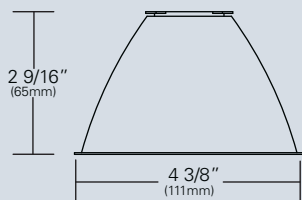
## LX-J10-REF (J1) (111mm/15°)

Faceted reflectively coated metal optic. Tool-less, twist and lock installation. Black (B), White (W), or Aluminized (CLR) finish.



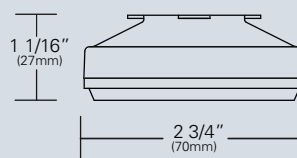
## LX-M90-REF (M9) (70mm/20°) (Wide Field Angle)

Computer designed polycarbonate specular optic. Tool-less, twist and lock installation. Black (B), White (W), or Aluminized (CLR) finish.



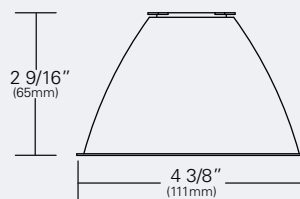
## LX-J30-REF (J3) (111mm/30°)

Faceted reflectively coated metal optic. Tool-less, twist and lock installation. Black (B), White (W), or Aluminized (CLR) finish.



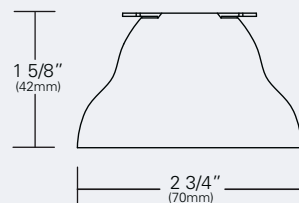
## LX-M40-REF-B (M4) (70mm/35°) (Narrow Field Angle)

Computer designed polycarbonate specular optic. Tool-less, twist and lock installation. Black finish.



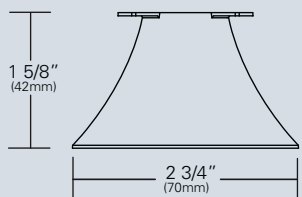
## LX-J40-REF (J4) (111mm/40°)

Faceted reflectively coated metal optic. Tool-less, twist and lock installation. Black (B), White (W), or Aluminized (CLR) finish.



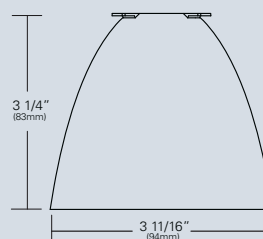
## LX-M80-REF (M8) (70mm/40°) (Wide Field Angle)

Computer designed polycarbonate specular optic. Tool-less, twist and lock installation. Black (B), White (W), or Aluminized (CLR) finish.



## LX-M60-REF (M6) (70mm/60°)

Computer designed polycarbonate specular optic. Tool-less, twist and lock installation. Black (B), White (W), or Aluminized (CLR) finish.



## LX-L20-REF (L2) (94mm/20°)

Computer designed polycarbonate specular optic. Tool-less, twist and lock installation. Black (B), White (W), or Aluminized (CLR) finish.

# LUMELX® 2026 SERIES • XICATO XTM 19MM PHOTOMETRIC DATA

**LED RATING: 13-98**

**J1- 111mm DIA Optic**  
 Beam Spread (minimum) **15°**  
 Center Beam Candlepower **7995**  
 CRI **98**

**J3- 111mm DIA Optic**  
 (NFA: Narrow Field Angle)  
 Beam Spread (minimum) **30°**  
 Center Beam Candlepower **2851**  
 CRI **98**

**J4- 111mm DIA Optic**  
 (FR: Field Reducer)  
 Beam Spread (minimum) **40°**  
 Center Beam Candlepower **1698**  
 CRI **98**

**LED RATING: 20-83**

**J1- 111mm DIA Optic**  
 Beam Spread (minimum) **15°**  
 Center Beam Candlepower **12300**  
 CRI **83**

**J3- 111mm DIA Optic**  
 (NFA: Narrow Field Angle)  
 Beam Spread (minimum) **30°**  
 Center Beam Candlepower **4386**  
 CRI **83**

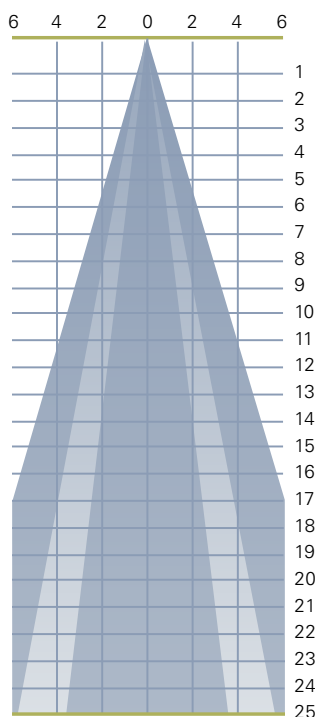
**J4- 111mm DIA Optic**  
 (FR: Field Reducer)  
 Beam Spread (minimum) **40°**  
 Center Beam Candlepower **2613**  
 CRI **83**

**LED RATING: 13-98**

All Max. Footcandles at 0° Beam Axis

	J4 (40°)	J3 (30°)	J1 (15°)
1698	2851	7995	
425	713	1999	
189	317	888	
106	178	500	
68	114	320	
47	79	222	
35	58	163	
27	45	125	
21	35	99	
17	29	80	
14	24	66	
12	20	56	
10	17	47	
9	15	41	
8	13	36	
7	11	31	
6	10	28	
5	9	25	
5	8	22	
4	7	20	
4	6	18	
4	6	17	
3	5	15	
3	5	14	
3	5	13	

**All Distances in Feet**



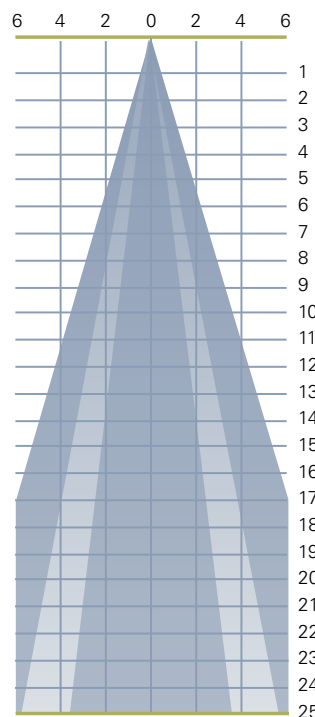
Photometric Data based on LED Rating: 13-98 (1300 Lumens/98CRI/20watts)

**LED RATING: 20-83**

All Max. Footcandles at 0° Beam Axis

	J4 (40°)	J3 (30°)	J1 (15°)
2613	4386	12300	
653	1097	3075	
290	487	1367	
163	274	769	
105	175	492	
73	122	342	
53	90	251	
41	69	192	
32	54	152	
26	44	123	
22	36	102	
18	30	85	
12	26	73	
10	22	63	
9	19	55	
8	17	48	
7	15	43	
7	14	38	
6	12	34	
5	11	31	
5	10	28	
5	9	25	
4	8	23	
3	8	21	
3	7	20	

**All Distances in Feet**



Photometric Data based on LED Rating: 20-83 (2000 Lumens/83CRI/23watts)

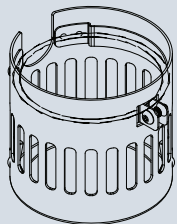
# LUMeLEX<sup>®</sup> 2026 SERIES • ENERGY STAR



Below are the LumeLEX 2026 fixture combinations that are Energy Star certified.

LED Module	LED Rating Lumens/CRI/Wattage	Color Temp	Optic mm/angle	Fitting	Dimming
<input checked="" type="checkbox"/> T19 XTM (19mm)	<input checked="" type="checkbox"/> 20-98 2000/98/28	<input checked="" type="checkbox"/> 27 2700K	<input checked="" type="checkbox"/> M6 70mm/60°	<input checked="" type="checkbox"/> 2G Universal Fitting	<input checked="" type="checkbox"/> ED Integral (10%) (0E & 5A fitting only)
	<input checked="" type="checkbox"/> 26-98 2600/98/32	<input checked="" type="checkbox"/> 30 3000K	<input checked="" type="checkbox"/> M8 70mm/40° WFA	<input checked="" type="checkbox"/> 3G Pipe Clamp	<input checked="" type="checkbox"/> 10 0-10V (10%) (5A fitting only)
	<input checked="" type="checkbox"/> 30-83 3000/83/32	<input checked="" type="checkbox"/> 35 3500K	<input checked="" type="checkbox"/> M9 70mm/20° WFA	<input checked="" type="checkbox"/> 5A LSI Canopy	
	<input checked="" type="checkbox"/> 33-83 3300/83/32	<input checked="" type="checkbox"/> 40 4000K		<input checked="" type="checkbox"/> 0E LSI Track Fitting (ED Dimming Only)	
				<input checked="" type="checkbox"/> EF 00 Emergency Fitting	

# LUMELX 2026 • ACCESSORIES

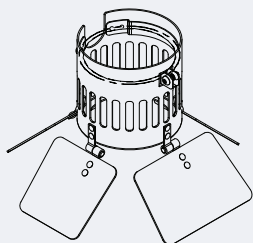
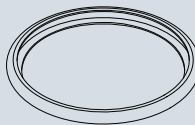


## LX2024-HOLDER

External holder for size AA accessories and LXM Gels. Specify finish.

## BACKER RING AA

Aluminum ring to hold gel when no other size AA accessories are being used.



## LX2024 BARNDOOR

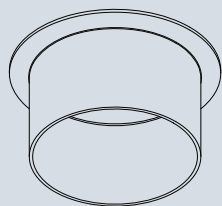
External holder with 4-way individually adjustable blades for control of light beam. Holds size AA accessories and LXM Gels. Specify finish.

## 'LIGHT BLOCKING SCREENS AA

Stainless steel mesh screens used alone or in combinations will block from approximately 20% to 90% of the transmitted light without changing color temperature of the light. (LX2024-Holder or LX2024 Barndoor required for use with size AA Light Blocking Screens)



No.	% of Light Blocked
AA801S	20
AA802S	30
AA803S	40

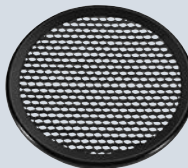


## HOOD 2IN AA

2 inch deep hood (LX2024-Holder or LX2024 Barndoor required for use with Hood 2IN AA)

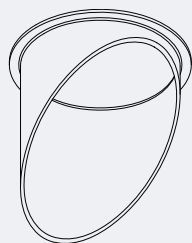
## LOUVER HEX AA

1/8" thick Hexcell black metal louver used for thin profile. (LX2024-Holder or LX2024 Barndoor required for use with LOUVER HEX AA)



## LOUVER HEX LXM, LXL, OR LXJ

1/8" thick Hexcell black metal louver used for thin profile. (Gel Holder required for use with LOUVER HEX LXM, LXL, or LXJ)

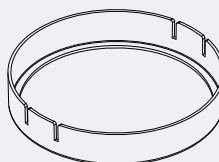


## ANG HOOD 2IN AA

2 inch deep angled hood (LX2024-Holder or LX2024 Barndoor required for use with ANG Hood 2IN AA)

## GEL HOLDER LXM, LXL, OR LXJ

External Gel Holder. Specify holder finish color. Gels not included. Does not hold glass accessories or hood.



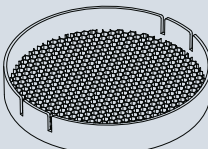
## SPREAD LENSES AND BEAM SOFTENER

No.	Description	% of Light Transmission
990	Spread Lens/Clear	83 (5°X 50°)
992	Spread Lens/Clear	85 (5°X 30°)
995	Spread Lens/Clear	83 (50°X 50°)
996	Spread Lens/Clear	86 (45°X 50°)
998	Beam Softener/Clear	80 (45°X 45°)

(LX2024-Holder or LX2024 Barndoor required for use with size AA Spread Lens/Beam Softener)

## 'LIGHT BLOCKING SCREENS LXM, LXL, OR LXJ

Stainless steel mesh screens used alone or in combinations will block from approximately 20% to 90% of the transmitted light without changing color temperature of the light. (Gel Holder required for use with size LXM, LXL, or LXJ Light Blocking Screens)



No.	% of Light Blocked
LXM, LXL, or LXJ 801S	20
LXM, LXL, or LXJ 802S	30
LXM, LXL, or LXJ 803S	40

1. Figures vary based upon LED module/optic being used and relationship of screen(s) to LED module/optic and to each other.

1. Figures vary based upon LED module/optic being used and relationship of screen(s) to LED module/optic and to each other.

# LUMELLEX® 2026 SERIES • GELS

As the foremost innovator in accent lighting, LSI offers a complete range of pre-cut Gels to modify the spread and color of light for the LumelLEX LED Series.



## LumelLEX® SPREAD GELS

Size: AA (76 mm diameter)	Size: LXM (70 mm diameter)	Size: LXL (94 mm diameter)	Size: LXJ (111 mm diameter)	Spread Gel
GELL1-AA	GELL1-LXM	GELL1-LXL	GELL1-LXJ	1° Spread Gel
GELL5-AA	GELL5-LXM	GELL5-LXL	GELL5-LXJ	5° Spread Gel
GELL10-AA	GELL10-LXM	GELL10-LXL	GELL10-LXJ	10° Spread Gel
GELL20-AA	GELL20-LXM	GELL20-LXL	GELL20-LXJ	20° Spread Gel
GELL30-AA	GELL30-LXM	GELL30-LXL	GELL30-LXJ	30° Spread Gel
GELL40-AA	GELL40-LXM	GELL40-LXL	GELL40-LXJ	40° Spread Gel
GELL60-AA	GELL60-LXM	GELL60-LXL	GELL60-LXJ	60° Spread Gel
GELL80-AA	GELL80-LXM	GELL80-LXL	GELL80-LXJ	80° Spread Gel
GELL30B5-AA	GELL30B5-LXM	GELL30B5-LXL	GELL30B5-LXJ	30° by 5° Spread Gel
GELL40B2-AA	GELL40B2-LXM	GELL40B2-LXL	GELL40B2-LXJ	40° by 0.2° Spread Gel
GELL60B1-AA	GELL60B1-LXM	GELL60B1-LXL	GELL60B1-LXJ	60° by 1° Spread Gel
GELL60B10-AA	GELL60B10-LXM	GELL60B10-LXL	GELL60B10-LXJ	60° by 10° Spread Gel
GELL75B45-AA	GELL75B45-LXM	GELL75B45-LXL	GELL75B45-LXJ	75° by 45° Spread Gel
GELL90B60-AA	GELL90B60-LXM	GELL90B60-LXL	GELL90B60-LXJ	90° by 60° Spread Gel
GELR101-AA	GELR101-LXM	GELR101-LXL	GELR101-LXJ	Beam Softener

## LumelLEX® COLOR GELS

Size: AA (76 mm diameter)	Size: LXM (70 mm diameter)	Size: LXL (94 mm diameter)	Size LXJ (111 mm diameter)	Gel Color	Size: AA (76 mm diameter)	Size: LXM (70 mm diameter)	Size: LXL (94 mm diameter)	Size LXJ (111 mm diameter)	Gel Color
GELR2-AA	GELR2-LXM	GELR2-LXL	GELR2-LXJ	Bastard Amber	GELR312-AA	GELR312-LXM	GELR312-LXL	GELR312-LXJ	Canary
GELR7-AA	GELR7-LXM	GELR7-LXL	GELR7-LXJ	Pale Yellow	GELR3204-AA	GELR3204-LXM	GELR3204-LXL	GELR3204-LXJ	Half Blue
GELR12-AA	GELR12-LXM	GELR12-LXL	GELR12-LXJ	Straw	GELR331-AA	GELR331-LXM	GELR331-LXL	GELR331-LXJ	Shell Pink
GELR13-AA	GELR13-LXM	GELR13-LXL	GELR13-LXJ	Straw Tint	GELR383-AA	GELR383-LXM	GELR383-LXL	GELR383-LXJ	Sapphire Blue
GELR14-AA	GELR14-LXM	GELR14-LXL	GELR14-LXJ	Medium Straw	GELR397-AA	GELR397-LXM	GELR397-LXL	GELR397-LXJ	Pale Grey
GELR21-AA	GELR21-LXM	GELR21-LXL	GELR21-LXJ	Golden Amber	GELR2001-AA	GELR2001-LXM	GELR2001-LXL	GELR2001-LXJ	Storaro Red
GELR25-AA	GELR25-LXM	GELR25-LXL	GELR25-LXJ	Orange Red	GELR2004-AA	GELR2004-LXM	GELR2004-LXL	GELR2004-LXJ	Storaro Green
GELR26-AA	GELR26-LXM	GELR26-LXL	GELR26-LXJ	Light Red	GELR2009-AA	GELR2009-LXM	GELR2009-LXL	GELR2009-LXJ	Storaro Violet
GELR27-AA	GELR27-LXM	GELR27-LXL	GELR27-LXJ	Medium Red	GELR3202-AA	GELR3202-LXM	GELR3202-LXL	GELR3202-LXJ	Full Blue
GELR57-AA	GELR57-LXM	GELR57-LXL	GELR57-LXJ	Lavender	GELR3206-AA	GELR3206-LXM	GELR3206-LXL	GELR3206-LXJ	Third Blue
GELR62-AA	GELR62-LXM	GELR62-LXL	GELR62-LXJ	Booster Blue	GELR3216-AA	GELR3216-LXM	GELR3216-LXL	GELR3216-LXJ	Eighth Blue <sup>1</sup>
GELR71-AA	GELR71-LXM	GELR71-LXL	GELR71-LXJ	Sea Blue	GELR3318-AA	GELR3318-LXM	GELR3318-LXL	GELR3318-LXJ	Tough 1/8 Minusgreen
GELR72-AA	GELR72-LXM	GELR72-LXL	GELR72-LXJ	Azure Blue	GELR3410-AA	GELR3410-LXM	GELR3410-LXL	GELR3410-LXJ	Roscosun (1/8 CTO) <sup>2</sup>
GELR91-AA	GELR91-LXM	GELR91-LXL	GELR91-LXJ	Primary Green	GELR3441-AA	GELR3441-LXM	GELR3441-LXL	GELR3441-LXJ	Full Straw (CTS)
GELR97-AA	GELR97-LXM	GELR97-LXL	GELR97-LXJ	Light Grey	GELR3443-AA	GELR3443-LXM	GELR3443-LXL	GELR3443-LXJ	Quarter Straw (CTS)
GELR98-AA	GELR98-LXM	GELR98-LXL	GELR98-LXJ	Medium Grey	GELR4330-AA	GELR4330-LXM	GELR4330-LXL	GELR4330-LXJ	CalColor 30 Cyan
GELR101-AA	GELR101-LXM	GELR101-LXL	GELR101-LXJ	Light Frost	GELR4415-AA	GELR4415-LXM	GELR4415-LXL	GELR4415-LXJ	CalColor 15 Green
GELR104-AA	GELR104-LXM	GELR104-LXL	GELR104-LXJ	Tough Silk	GELR4490-AA	GELR4490-LXM	GELR4490-LXL	GELR4490-LXJ	CalColor 90 Green
GELR119-AA	GELR119-LXM	GELR119-LXL	GELR119-LXJ	Lt. Hamburg Frost	GELR4860-AA	GELR4860-LXM	GELR4860-LXL	GELR4860-LXJ	CalColor 60 Pink
GELR121-AA	GELR121-LXM	GELR121-LXL	GELR121-LXJ	Blue Diffusion	GELR4890-AA	GELR4890-LXM	GELR4890-LXL	GELR4890-LXJ	CalColor 90 Pink
GELR305-AA	GELR305-LXM	GELR305-LXL	GELR305-LXJ	Rose Gold	GELR4930-AA	GELR4930-LXM	GELR4930-LXL	GELR4930-LXJ	CalColor 30 Lavender

<sup>1</sup> (Boosts 3200K to 3300K) <sup>2</sup> (Reduces 5500K to 4900K)

\*LX2024-Holder or Barndoor required for use with AA Gels

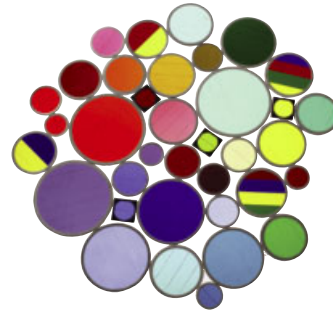
\*\*Gel Holder required for use with LXM, LXL, and LXJ Gels



# COLOR MEDIA

## COLOR FILTERS

As the foremost innovator in accent lighting, LSI offers a complete range of permanent fade-free glass color filters, which are available in nine stock diameters. All glass color filters are rimmed in a seamless aluminum ring and are slotted for heat expansion.



Size	Diameter	LSI Fixture Series	No.	Color	% of Light Transmission
AAA	2 3/8"	LumeLEX® 2020/2030/2031/2038, SSLCX16, SSL260, LumeLEX MAR-S	902	Medium Pink	36
			903	Deep Pink	37
			904	Flesh Pink	73
			906	Pale Lavender	14
			907	Surprise Pink	19
			908	Lilac	21
			910	Warm Red	10
			911	Strawberry	6
			912	Ruby	4
			913	Magenta	1
			914	Light Amethyst	25
			915	Medium Amethyst	16
			916	Deep Amethyst	4
			917	Olive	18
			918	Light Green	68
			920	Medium Green	25
			921	Deep Green	7
			922	Silver green	65
			923	Yellow Green	49
			924	Emerald Green	12
			925	Light Turquoise	68
			926	Medium Turquoise	40
			927	Deep Turquoise	17
			928	Light Blue	34
			930	Medium Blue	3
			932	Daylight	59
			933	Gene Moore Blue	18
			936	Grey	56
			937	Light Blue Green	17
			939	Light Amber	68
			940	Medium Amber	48
			941	Deep Amber	43
			942	Straw	78
			943	Gold	87
			944	Canary Yellow	84
			945	Lemon	81
			946	Pumpkin	32
			947	Tangerine	20
			948	Orange	23
			949	Pink Gold	54
			950	Bronze	48
			951	Brass	11
			952	Autumn Tan	11
			953	Leaf Brown	19
			954	Butter Pecan	3
			955	Toasted Almond	1

**Notes:**

1. Values given are approximate due to slight variations in glass color and thickness.

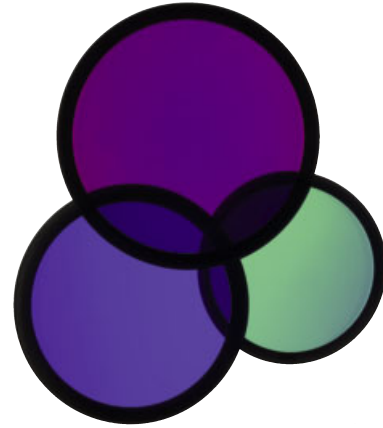
# COLOR MEDIA

## DICHROIC COLOR FILTERS

In addition to our complete line of glass color filters, LSI now offers dichroic glass color filters that achieve purer, more saturated, richer color by selective wavelength transmission. Since these filters reflect rather than absorb the unwanted color wavelengths, a higher intensity of colored light can be obtained with fewer or lower wattage fixtures. In addition, this selective transmission allows for very accurate color matching from filter to filter.

All standard LSI filter sizes are available in a wide palette of well chosen dichroic colors that can be used with all LSI fixtures that accept accessories.

LSI dichroic glass color filters have the added benefit of being rimmed for extra durability to allow for frequent usage without fear of breakage or edge chipping.



Size	Diameter	LSI Fixture Series	Technical Data	No.	Color	% of Light Transmission
AAA	2 3/8"	LumeLEX® 2020/2030/2031/2038, SSLCX16, SSL260, LumeLEX MAR-S	Dichroic color filters are created in a vacuum chamber by multi-layer vapor deposits of different minerals onto low expansion, chemically resistant Borosilicate glass.	2001	Light Pink	69
AA	3"	LumeLEX® 2024 (with LX2024-Holder or LX2024-Barndoor), LumeLEX® 2026, LumeLEX® 2044, LumeLEX 2048	Deposits are made in alternating layers of varying microscopic thickness which allow very narrow color wavelengths to be selectively transmitted and all other wavelengths to be reflected.	2002	Medium Pink	43
A	3 1/2"	LumeLEX® 2060, SSL230, SSLCX30, SSLGR30CL, SSLGR36	LSI does not recommend using dichroic color filters with lamps or fixtures that have beam spreads greater than 40° because a secondary color aura is created by the wide angular transmitted wavelengths that are different than the desired color wavelength.	2003	Hot Pink	11
B	4 1/4"	LumeLEX® MAR-L	Since there is mainly transmission and reflection of the color wavelengths by the dichroic filter and very little absorption, the dichroic filter can be used with many high temperature lights that normally would not accept color filters.	2004	Pale Pink	55
C	4 3/4"	LumeLEX® 2084, LumeLEX® 2088, SSL238, SSLCX36, SSLCX38, SSLGR38CL		2010	Deep Magenta	29
				2011	Lavender	24
				2012	Vivid Magenta	31
				2013	Lavender Accent	48
				2014	Lilac	37
				2015	Purple Fusion	12
				2020	Sky Blue	39
				2021	Sea Blue	39
				2022	Cyan	33
				2023	Light Blue Green	30
				2024	Primary Blue	24
				2025	Medium Red Blue	15
				2026	Deep Purple	16
				2027	Peacock Blue	53
				2028	Mediterranean Blue	20
				2029	Boost Blue	51
				2040	Light Yellow Green	64
				2041	Fern Green	47
				2042	Turquoise	35
				2043	Primary Green	31
				2044	Industrial Green	64
				2050	Yellow	80
				2051	Amber	71
				2052	Amber Blush	38
				2053	Bastard Amber	71
				2054	Goldenrod	63
				2055	Bright Straw	56
				2060	Medium Orange	51
				2061	Orange	44
				2070	Flame Red	27
				2071	Primary Red	25