

LUMELX® 2038 SERIES 120/277V • LED • COB



Elegant fixed downlight designed specifically for the most demanding architectural applications

- Designed for COB architecture up to 5 Watts
- 4° optic produces 26000 CBCP with 270 lumens at 5 watts (12° and 25° also available)
- System efficiency up to 50 lumens/watt
- 50,000 hour life to 70% lumen output, L70 at 95°F max ambient
- Choice of color temperature
- Color Rendering Index (CRI) 90+
- Color consistency, 2 MacAdam ellipses
- Tested to LM79 and LM80 Protocols, TM-30 available
- Hidden integral electronic driver compatible with reverse phase (ELV compatible) dimmers down to 10%
- Integral Dimming with built-in potentiometer also available
- Accessory holder accepts up to two size-AAA LSI filters and accessories
- Sturdy die-cast aluminum housing
- No UV or IR emissions; no mercury or lead
- On/off safety switch (on OE Track fitting)
- Finishes: LSI Black, White, and Silver
- Fixture weight: 3 lbs
- All modules are field replaceable

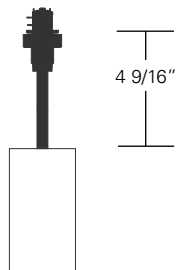
MOUNTING OPTIONS

Please review the **ORDERING INFORMATION** section on the next page on how to specify the following:

- LED Module
- LED Rating
- Color Temperature
- Optic - mm/beam spread
- Dimming
- Voltage
- Finish

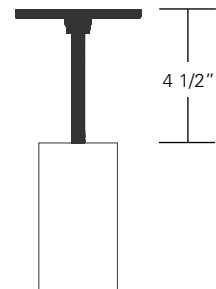
LX2038-XXXXX-XXXXXX-0E-XXXXXX

Lexan Fitting for 1 and 2 circuit LSI Track. With On/Off switch.



LX2038-XXXXX-XXXXXX-5E-XXXXXX

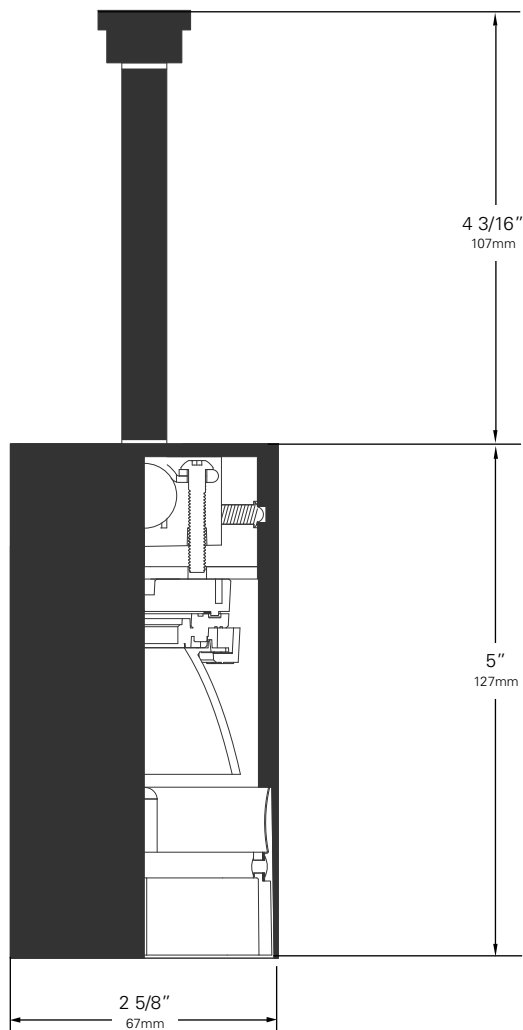
Canopy for permanent mounting on standard 4" octagonal junction boxes. (2-1/8" deep)



Other Options (Consult Factory):

- Custom stems, specify length (4" – 48")
- Custom color, RAL palette
- Security/Worklite Fixture, use **—EF** as mounting option. (track mount only)

LUMELX® 2038 SERIES 120/277V • LED • COB



ORDERING INFORMATION

COB Fixture

1. Choose the desired LED Module
(ZE1) for single LED
2. Choose the letter code to designate the desired LED Rating
Lumens/CRI/Wattage (03-90) for 270/90/5
3. Choose the numeric code to designate the desired
Color Temperature (27) for 2700K **(30)** for 3000K **(35)** for 3500K
For other CCT, consult factory
4. Use the following numeric code to designate the **Optic**
(04) for 35mm/4°
(12) for 35mm/12°
(25) for 35mm/25°
5. Select your **Mounting Option**
(0E) Track Fitting **(5E)** Canopy Fitting
6. Choose the letter code for **Dimming Type**
(TE) Trailing Edge (ELV Reverse Phase) (10%)
(ED) Integral Dimming (10%) (0E fitting only, 120/230V only)
7. Choose the desired **Voltage:**
(120) for 120V **(230)** for 220-240V
(277) for 277V
8. Choose a **Finish** for your fixture:
Black **(B)** White **(W)** Silver **(S)**

Example:

LX2038 - ZE1 03-90 30 04 - 0E - TE 120 B
FIXTURE LED MODULE LED RATING CCT OPTIC FITTING DIMMING VOLTAGE FINISH

9. Don't forget your Accessories!

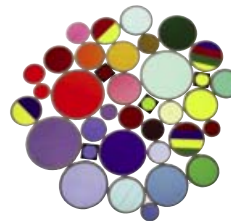
Driver Type (Electronic)

Input Power (A) - 120V	0.04
Input Power (A) - 277V	0.02
Wattage	5
Power Factor - 115V	0.96

Chromaticity Specifications

LED	R _a -CRI	R _f -Fidelity	R _g -Gamut Area
ZE1	90	92	102

ACCESSORIES



Glass Color Filters AAA

As the foremost innovator in accent lighting, LSI offers a complete range of permanent fade-free glass color filters, which are available in nine stock diameters.

- **Cross Baffle LX2030**
- **Louver Hex AAA**
- **Spread Lenses AAA990, AAA992, AAA995, AAA996**
- **Beam Softener AAA998**
- **Light Blocking Screens AAA801S, AAA802S, AAA803S**
- **Color and Spread Gels AAA**
- **Backer Ring AAAB**

LUMELX® 2038 SERIES • COB PERFORMANCE

The performance characteristics of the LX2038 family of products can be customized based on the LED module and the optic selected.

Each available LED module is defined by four characteristics – the color rendering index (CRI), the correlated color temperature (CCT), the power that it uses (watts), its “available lumens” and beam spread. Note that available lumens is a theoretical value that represents the light output of the module on its own – no fixture or optic attached.

In the LSI part number, the LED module is specified with a letter and a number that immediately follow the product series number. For example, in the part number LX2038-ZE103-903004-0E-TE120B, the “ZE103-903004” represents an LED module with an output of 270 lumens, a CRI of 90, a power usage of 5 watts, color temperature of 3000K and a 4-Degree beam.

Additional parameters, such as Center Beam Candle Power (CBCP), Delivered Lumens, and Efficiency (Lumens per Watt) are all shown in a table that is organized by LED module and optic combination.

CBCP = Center Beam Candle Power			
LED Module	Optic (Reflector)		
Lumens/CRI/Wattage	04°	12°*	25°*
270/90/5	26000	4100	1100

Delivered Lumens			
LED Module	Optic (Reflector)		
Lumens/CRI/Wattage	04°	12°*	25°*
270/90/5	120	250	240

Efficiency = Lumens Per Watt			
LED Module	Optic (Reflector)		
Lumens/CRI/Wattage	04°	12°*	25°*
270/90/5	24	50	48

*Preliminary data

LED Module Lumens/CRI/Wattage SKU Code	ZE1
Nominal Fixture Power (+/- 20%), Watts	5
Maximum Inrush Current Amps	10
Minimum Power Factor	0.92

Inrush current is instantaneous current drawn by the LED only when fixture is initially powered on or instantaneously changed from full dim to full bright. For more details see Dimming Application Sheet, IS-0119.

LUMELX[®] 2038 SERIES • COB PHOTOMETRIC DATA

PHOTOMETRIC DATA

LX2038

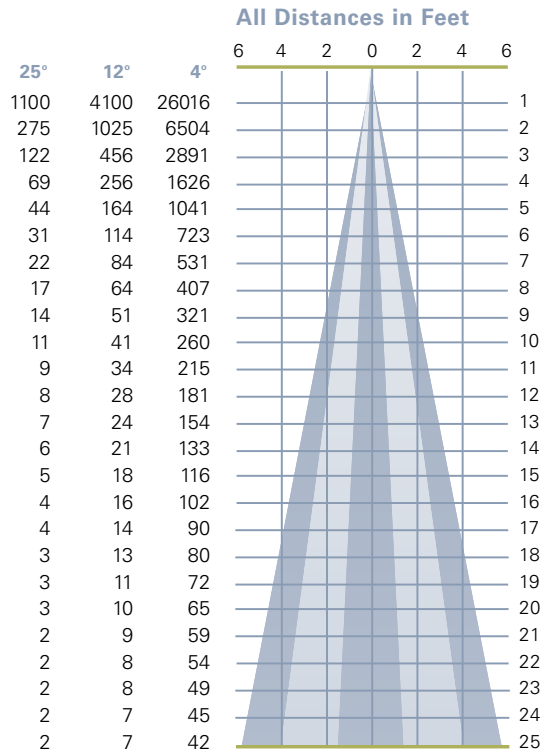
Beam Spread (minimum) **4°**
 Center Beam Candlepower **26016**
 CRI **90+**

LX2038

(preliminary)
 Beam Spread (minimum) **12°**
 Center Beam Candlepower **4100**
 CRI **90+**

LX2038

(preliminary)
 Beam Spread (minimum) **25°**
 Center Beam Candlepower **1100**
 CRI **90+**

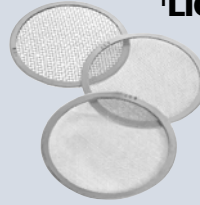


LUMELX 2038 • ACCESSORIES



SPREAD LENSES AND BEAM SOFTENER

No.	Description	% of Light Transmission
AAA990	Spread Lens/Clear	83 (5°X 50°)
AAA992	Spread Lens/Clear	85 (5°X 30°)
AAA995	Spread Lens/Clear	83 (50°X 50°)
AAA996	Spread Lens/Clear	86 (45°X 50°)
AAA998	Beam Softener/Clear	80 (45°X 45°)



'LIGHT BLOCKING SCREENS AAA

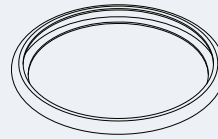
Stainless steel mesh screens used alone or in combinations will block from approximately 20% to 90% of the transmitted light without changing color temperature of the light.

No.	% of Light Blocked
AAA801S	20
AAA802S	30
AAA803S	40



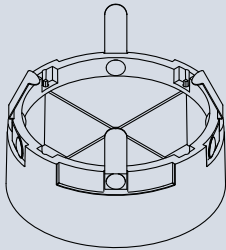
LOUVER HEX AAA

1/8" thick Hexcell black metal louver used for thin profile.



BACKER RING AAA

Stainless steel ring to hold thin film gels when no other size AAA accessories are being used.



CROSS BAFFLE LX2030

Controls spill light and glare. Black finish.

1. Figures vary based upon LED module/optic being used and relationship of screen(s) to LED module/optic and to each other.

LUMELIX® 2038 SERIES • GELS

As the foremost innovator in accent lighting, LSI offers a complete range of pre-cut Gels to modify the spread and color of light for the LumeLEX LED Series.



LumeLEX® SPREAD GELS

Size: AAA	Spread Gel
GELL1-AAA	1° Spread Gel
GELL5-AAA	5° Spread Gel
GELL10-AAA	10° Spread Gel
GELL20-AAA	20° Spread Gel
GELL30-AAA	30° Spread Gel
GELL40-AAA	40° Spread Gel
GELL60-AAA	60° Spread Gel
GELL80-AAA	80° Spread Gel
GELL30B5-AAA	30° by 5° Spread Gel
GELL40B2-AAA	40° by 0.2° Spread Gel
GELL60B1-AAA	60° by 1° Spread Gel
GELL60B10-AAA	60° by 10° Spread Gel
GELL75B45-AAA	75° by 45° Spread Gel
GELL90B60-AAA	90° by 60° Spread Gel
GELR101-AAA	Beam Softener

LumeLEX® COLOR GELS

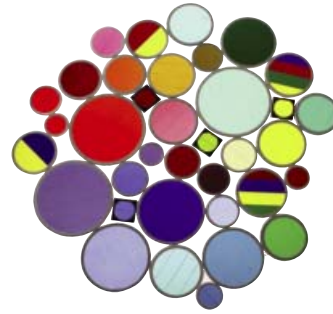
Size: AAA	Gel Color	Size: AAA	Gel Color
GELR2-AAA	Bastard Amber	GELR312-AAA	Canary
GELR7-AAA	Pale Yellow	GELR3204-AAA	Half Blue
GELR12-AAA	Straw	GELR331-AAA	Shell Pink
GELR13-AAA	Straw Tint	GELR383-AAA	Sapphire Blue
GELR14-AAA	Medium Straw	GELR397-AAA	Pale Grey
GELR21-AAA	Golden Amber	GELR2001-AAA	Storaro Red
GELR25-AAA	Orange Red	GELR2004-AAA	Storaro Green
GELR26-AAA	Light Red	GELR2009-AAA	Storaro Violet
GELR27-AAA	Medium Red	GELR3202-AAA	Full Blue
GELR57-AAA	Lavender	GELR3206-AAA	Third Blue
GELR62-AAA	Booster Blue	GELR3216-AAA	Eighth Blue (Boosts 3200K to 3300K)
GELR71-AAA	Sea Blue	GELR3318-AAA	Tough 1/8 Minusgreen
GELR72-AAA	Azure Blue	GELR3410-AAA	Roscosun (1/8 CTO) (Reduces 5500K to 4900K)
GELR91-AAA	Primary Green	GELR3441-AAA	Full Straw (CTS)
GELR97-AAA	Light Grey	GELR3443-AAA	Quarter Straw (CTS)
GELR98-AAA	Medium Grey	GELR4330-AAA	CalColor 30 Cyan
GELR101-AAA	Light Frost	GELR4415-AAA	CalColor 15 Green
GELR104-AAA	Tough Silk	GELR4490-AAA	CalColor 90 Green
GELR119-AAA	Lt. Hamburg Frost	GELR4860-AAA	CalColor 60 Pink
GELR121-AAA	Blue Diffusion	GELR4890-AAA	CalColor 90 Pink
GELR305-AAA	Rose Gold	GELR4930-AAA	CalColor 30 Lavender

*Backer Ring "AAA" required when no other "AAA" Accessories are being used.

COLOR MEDIA

COLOR FILTERS

As the foremost innovator in accent lighting, LSI offers a complete range of permanent fade-free glass color filters, which are available in nine stock diameters. All glass color filters are rimmed in a seamless aluminum ring and are slotted for heat expansion.



Size	Diameter	LSI Fixture Series	Special Glass Color Filters	No.	Color	% of Light Transmission
AAA	2 3/8"	LumeLEX® 2020/2030/2031/2038, SSLCX16, SSL260, LumeLEX MAR-S	<p>Special Glass Color Filters LSI will fabricate, on special order, glass color filters in most sizes and shapes.</p> <p>FS4 – Color Filter Samples To facilitate selection of glass color filters, LSI supplies a complete set of 1 3/4" X 1 3/4" labeled glass and dichroic samples in a handy carrying case.</p>	902	Medium Pink	36
				903	Deep Pink	37
				904	Flesh Pink	73
				906	Pale Lavender	14
				907	Surprise Pink	19
AA	3"	LumeLEX® 2024 (with LX2024-Holder or LX2024-Barndoor), LumeLEX® 2026, LumeLEX® 2044, LumeLEX 2048		908	Lilac	21
				910	Warm Red	10
				911	Strawberry	6
				912	Ruby	4
				913	Magenta	1
				914	Light Amethyst	25
				915	Medium Amethyst	16
				916	Deep Amethyst	4
A	3 1/2"	LumeLEX® 2060, SSL230, SSLCX30, SSLGR30CL, SSLGR36		917	Olive	18
				918	Light Green	68
				920	Medium Green	25
				921	Deep Green	7
				922	Silver green	65
				923	Yellow Green	49
				924	Emerald Green	12
				925	Light Turquoise	68
				926	Medium Turquoise	40
				927	Deep Turquoise	17
				928	Light Blue	34
				930	Medium Blue	3
				932	Daylight	59
				933	Gene Moore Blue	18
				936	Grey	56
				937	Light Blue Green	17
				939	Light Amber	68
				940	Medium Amber	48
				941	Deep Amber	43
				942	Straw	78
				943	Gold	87
				944	Canary Yellow	84
				945	Lemon	81
				946	Pumpkin	32
				947	Tangerine	20
				948	Orange	23
				949	Pink Gold	54
				950	Bronze	48
				951	Brass	11
				952	Autumn Tan	11
				953	Leaf Brown	19
				954	Butter Pecan	3
				955	Toasted Almond	1

Notes:

1. Values given are approximate due to slight variations in glass color and thickness.

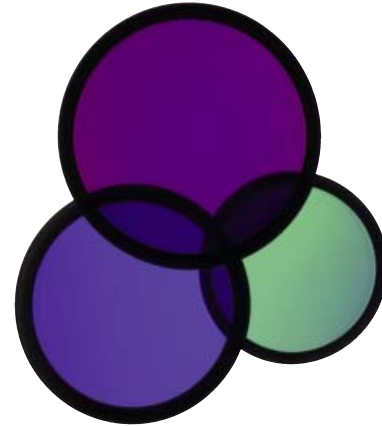
COLOR MEDIA

DICHROIC COLOR FILTERS

In addition to our complete line of glass color filters, LSI now offers dichroic glass color filters that achieve purer, more saturated, richer color by selective wavelength transmission. Since these filters reflect rather than absorb the unwanted color wavelengths, a higher intensity of colored light can be obtained with fewer or lower wattage fixtures. In addition, this selective transmission allows for very accurate color matching from filter to filter.

All standard LSI filter sizes are available in a wide palette of well chosen dichroic colors that can be used with all LSI fixtures that accept accessories.

LSI dichroic glass color filters have the added benefit of being rimmed for extra durability to allow for frequent usage without fear of breakage or edge chipping.



Size	Diameter	LSI Fixture Series	Technical Data	No.	Color	% of Light Transmission
AAA	2 3/8"	LumeLEX® 2020/2030/2031/2038, SSLCX16, SSL260, LumeLEX MAR-S	Dichroic color filters are created in a vacuum chamber by multi-layer vapor deposits of different minerals onto low expansion, chemically resistant Borosilicate glass.	2001	Light Pink	69
AA	3"	LumeLEX® 2024 (with LX2024-Holder or LX2024-Barndoor), LumeLEX® 2026, LumeLEX® 2044, LumeLEX 2048	Deposits are made in alternating layers of varying microscopic thickness which allow very narrow color wavelengths to be selectively transmitted and all other wavelengths to be reflected.	2002	Medium Pink	43
A	3 1/2"	LumeLEX® 2060, SSL230, SSLCX30, SSLGR30CL, SSLGR36	LSI does not recommend using dichroic color filters with lamps or fixtures that have beam spreads greater than 40° because a secondary color aura is created by the wide angular transmitted wavelengths that are different than the desired color wavelength.	2003	Hot Pink	11
B	4 1/4"	LumeLEX® MAR-L	Since there is mainly transmission and reflection of the color wavelengths by the dichroic filter and very little absorption, the dichroic filter can be used with many high temperature lights that normally would not accept color filters.	2004	Pale Pink	55
C	4 3/4"	LumeLEX® 2084, LumeLEX® 2088, SSL238, SSLCX36, SSLCX38, SSLGR38CL		2010	Deep Magenta	29
				2011	Lavender	24
				2012	Vivid Magenta	31
				2013	Lavender Accent	48
				2014	Lilac	37
				2015	Purple Fusion	12
				2020	Sky Blue	39
				2021	Sea Blue	39
				2022	Cyan	33
				2023	Light Blue Green	30
				2024	Primary Blue	24
				2025	Medium Red Blue	15
				2026	Deep Purple	16
				2027	Peacock Blue	53
				2028	Mediterranean Blue	20
				2029	Boost Blue	51
				2040	Light Yellow Green	64
				2041	Fern Green	47
				2042	Turquoise	35
				2043	Primary Green	31
				2044	Industrial Green	64
				2050	Yellow	80
				2051	Amber	71
				2052	Amber Blush	38
				2053	Bastard Amber	71
				2054	Goldenrod	63
				2055	Bright Straw	56
				2060	Medium Orange	51
				2061	Orange	44
				2070	Flame Red	27
				2071	Primary Red	25

Special Glass Color Filters

LSI will fabricate, on special order, dichroic glass color filters in most sizes and shapes not exceeding a 13" diameter circle overall.

FS4 — Color Filter Samples

To facilitate selection of glass color filters, LSI supplies a complete set of 1 3/4" X 1 3/4" labeled glass and dichroic samples in a handy carrying case.