

# LX2044 • 120/277V • XICATO 19MM • CONTROLTrack COMPATIBLE



## Elegant fixture designed specifically for the most demanding architecture applications.

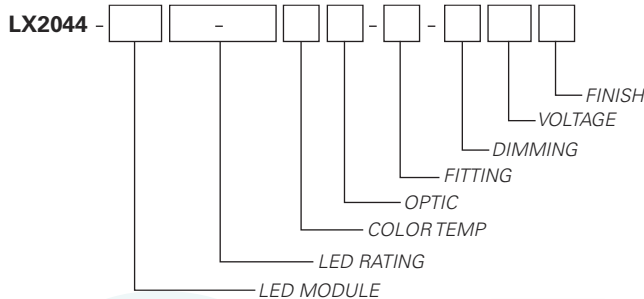
- Designed for the most versatile Xicato XTM 19mm LED module up to 23 Watts
- Extremely tight color consistency (less than 2 MacAdam Ellipses)
- System efficiency up to 100 lumens/watt
- Backed by Xicato's Five Year Color Consistency and Lumen Maintenance Warranty
- 50,000 hour life to 70% lumen output, L70 at 95°F max ambient
- Choice of color temperature
- Color Rendering Index (CRI) of either 98 (high) or 83 (standard)
- Color Fidelity (R<sub>f</sub>) 96 (high) or 78 (standard)
- Gamut Area Index (R<sub>g</sub>) 103 (high) or 101 (standard)
- Choice of lumen outputs (delivered lumens)
- Tested to LM79 and LM80 Protocols, TM-30 available
- 0-10V dimming allows for 2 zones of control on one circuit CONTROLTrack down to 10%
- DMX compatible with dimming below 1%
- Lutron EcoSystem compatible with dimming to 1% soft on/off (on LED modules up to 1300 Lumens)
- Field interchangeable optics (15°- 60°) modify the beam spread distribution
- Accessory holder accepts up to two size-AA LSI filters and accessories
- Finishes: LSI Black, White, and Silver
- Fixture weight: 3.5 lbs
- All modules are field replaceable

## FIXTURE PART NUMBERS

Please review the **ORDERING INFORMATION** section on the next page as well as the **MOUNTING OPTIONS** on page 3 to create a part number for each fixture that specifies the following:

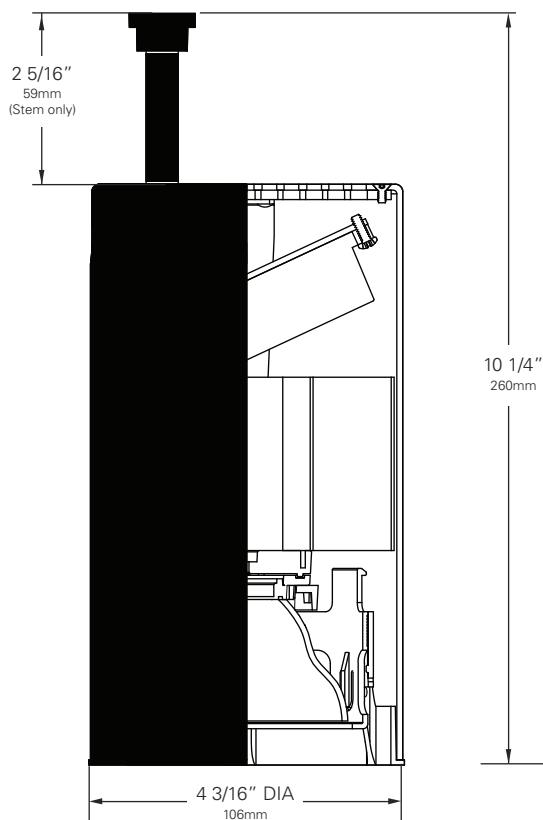
- LED Module
- LED Rating
- Color Temperature
- Optic (mm/beam spread)
- Fitting (Mounting Option)
- Dimming
- Voltage
- Finish

### PART NUMBER



Example Part Number: **LX2044-T1920-9830M2-CT3-DX120W** is a fixture with a Xicato 19mm LED module, 2000 Lumen/98 CRI/23 Watt LED rating, 3000°K Color Temperature, 70mm 20° Optic, CT3 CONTROLTrack fitting with DMX Address knobs and DMX compatible control gear, 120V and a White finish.

# LX2044 • 120/277V • XICATO 19MM • CONTROLTrack COMPATIBLE



## Color Temperature & Center Point Tolerance

Color Temp	Center Point	Tolerance
2700K	2700K	+/- 40K
3000K	2950K	+/- 50K
3500K	3420K	+/- 60K
4000K	4000K	+/- 70K

## Chromaticity Specifications

LED	R <sub>a</sub> -CRI	R <sub>f</sub> -Fidelity	R <sub>g</sub> -Gamut Area
T19-TS9 - 83	83	78	101
T19-TS9 - 98	98	96	103

## XTM 19MM ORDERING INFORMATION

### Base Fixture Model

LX2044-T19 (XTM 19mm)

### LED Rating (Lumens/CRI/Wattage)

- 10-83 = 1000/83/11
- 10-98 = 1000/98/13
- 13-83 = 1300/83/15
- 13-98 = 1300/98/20
- 20-83 = 2000/83/23
- 20-98 = 2000/98/23
- 23-83 = 2300/83/19
- 27-83 = 2700/83/23

### Color Temperature

- 27 = 2700K     30 = 3000K
- 35 = 3500K     40 = 4000K

### Optic

- WR = 72mm/ 15° Field Reducer     M2 = 70mm/ 20°
- M4 = 70mm/ 35°     M6 = 70mm/ 60°
- M8 = 70mm/ 40° Wide Field Angle
- M9 = 70mm/ 20° Wide Field Angle

### Fitting/Controls (Dimming)

- CT1-10 = CONTROLTrack Fitting & 0-10V (10%)
- CT3-DX = CONTROLTrack Fitting & DMX (<1%)
- CT1-L3 = CONTROLTrack Fitting & Lutron EcoSystem (1% soft on/off) for use on LED modules up to 1300 Lumens

### Voltage

- 120 = 120V     230 = 220-240V     277 = 277V

### Finish

- B = Black     W = White     S = Silver

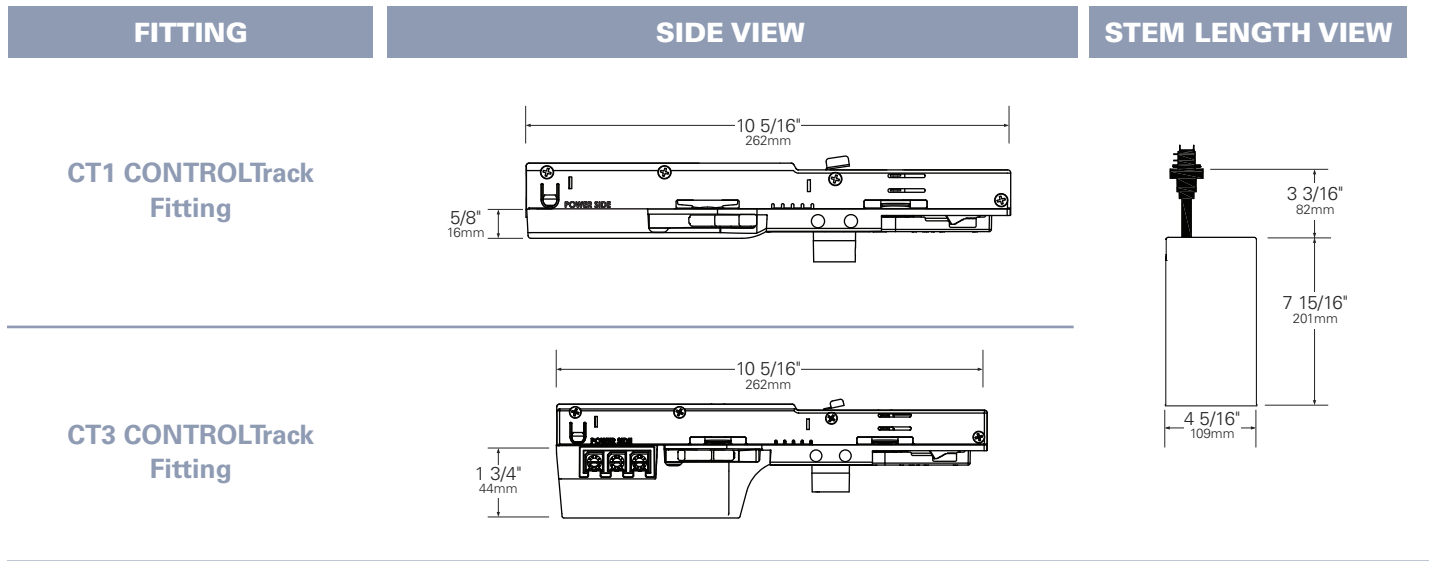
### Example Part Number:

**LX2044-T19**    **20-98**    **30**    **M2 - CT3-DX**    **120**    **W**  
FIXTURE MODEL    LED RATING    COLOR TEMP    OPTIC    FITTING/DIMMING    VOLTAGE    FINISH

### Other Options (Consult Factory):

- Custom Stems, specify length (4" - 48")
- Custom color, RAL palette

# LX2044 • MOUNTING OPTIONS



# LX2044 • PERFORMANCE

The performance characteristics of the LumeLEX family of products can be customized based on the LED module and the optic (reflector) selected.

Each available LED module is defined by four characteristics – the color rendering index (CRI), the correlated color temperature (CCT), the power that it uses (watts), and its “available lumens.” Note that available lumens is a theoretical value that represents the light output of the module on its own – no fixture or optic attached.

In the LSI part number, the LED module is specified with a letter and a number that immediately follow the product series number. For example, in the part number LX2044-T1920-8327M2-CT1-10120B, the “**T1920-8327**” represents an LED module with an output of 2000 lumens, a CRI of 83, a power usage of 23 watts and a color temperature of 2700K.

The available optics (reflectors) are characterized by size, beam angle, and in some cases the characteristics of the field angle (narrow or wide). The optic is specified by the two characters that follow the LED designation in the part number. For example, the “**M2**” in LX2044-T1920-8327M2-CT1-10120B is a 70mm diameter optic that has a 20-Degree beam with a narrow field.

Additional parameters, such as Center Beam Candle Power (CBCP), Delivered Lumens, and Efficiency (Lumens per Watt) are all shown in a table that is organized by LED module and optic combination.

## CBCP = Center Beam Candle Power

LED Module	Optic (Reflector)					
	M2	WR	M4	M6	M8	M9
<b>Lumens/CRI/Wattage</b>						
<b>1000/83/11</b>	3,270	2,490	2,180	980	1,480	3,000
<b>1000/98/13</b>	3,270	2,490	2,180	980	1,480	3,000
<b>1300/83/15</b>	4,251	3,237	2,834	1,274	1,924	3,900
<b>1300/98/20</b>	4,251	3,237	2,834	1,274	1,924	3,900
<b>2000/83/23</b>	6,540	4,980	4,360	1,960	2,960	6,000
<b>2000/98/23</b>	6,540	4,980	4,360	1,960	2,960	6,000
<b>2300/83/19</b>	7,521	5,727	5,014	2,254	3,404	6,900
<b>2700/83/23</b>	8,829	6,723	5,886	2,646	3,996	8,100

## Delivered Lumens

LED Module	Optic (Reflector)					
	M2	WR	M4	M6	M8	M9
<b>Lumens/CRI/Wattage</b>						
<b>1000/83/11</b>	390	220	580	720	830	830
<b>1000/98/13</b>	390	220	580	720	830	830
<b>1300/83/15</b>	507	286	754	936	1,079	1,079
<b>1300/98/20</b>	507	286	754	936	1,079	1,079
<b>2000/83/23</b>	780	440	1,160	1,440	1,660	1,660
<b>2000/98/23</b>	780	440	1,160	1,440	1,660	1,660
<b>2300/83/19</b>	897	506	1,334	1,656	1,909	1,909
<b>2700/83/23</b>	1,053	594	1,566	1,944	2,241	2,241

## Efficiency = Lumens Per Watt

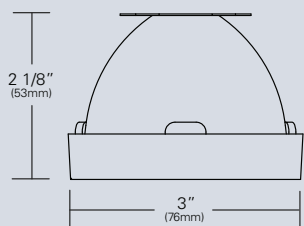
LED Module	Optic (Reflector)					
	M2	WR	M4	M6	M8	M9
<b>Lumens/CRI/Wattage</b>						
<b>1000/83/11</b>	35	20	53	65	75	75
<b>1000/98/13</b>	30	17	45	55	64	64
<b>1300/83/15</b>	34	19	50	62	72	72
<b>1300/98/20</b>	25	14	38	47	54	54
<b>2000/83/23</b>	34	19	50	63	72	72
<b>2000/98/23</b>	34	19	50	63	72	72
<b>2300/83/19</b>	47	27	70	87	100	100
<b>2700/83/23</b>	46	26	68	85	97	97

Absolute range of values are +/- 10% of typical value, and are for all color temperatures

LED Module Lumens/CRI/Wattage Letter Code	1000/83/11	1000/98/13	1300/83/15	1300/98/20	2000/83/23	2000/98/23	2300/83/23	2700/83/23
	10-83	10-98	13-83	13-98	20-83	20-98	23-83	27-83
Nominal Fixture Power (+/- 20%), Watts	11	13	15	20	23	23	23	23
Maximum Inrush Current, Amps	10	10	10	10	10	10	10	10
Minimum Power Factor	0.92	0.92	0.92	0.92	0.92	0.92	0.92	0.92

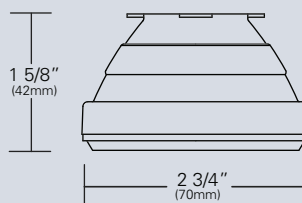
Inrush current is instantaneous current drawn by the LED only when fixture is initially powered on or instantaneously changed from full dim to full bright. For more details see Dimming Application Sheet, IS-0119.

# LX2044 • OPTICS



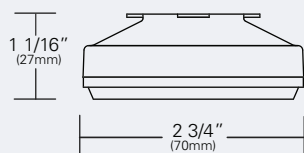
**LX-WRD-REF-CLR (WR)**  
**(72mm/15°)**

Field reducer. Proprietary field reducing baffle (black) with aluminized reflector. Tool-less, twist and lock installation.



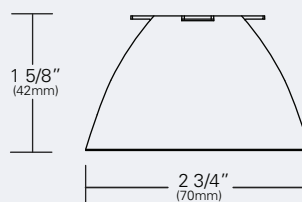
**LX-M20-REF-B (M2)**  
**(70mm/20°)**  
**(Narrow Field Angle)**

Computer designed polycarbonate lens. Tool-less, twist and lock installation. Black finish.



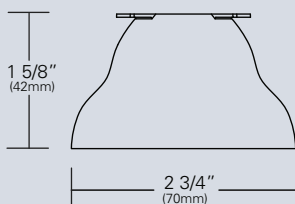
**LX-M40-REF-B (M4)**  
**(70mm/35°)**  
**(Narrow Field Angle)**

Computer designed polycarbonate specular optic. Tool-less, twist and lock installation. Black finish.



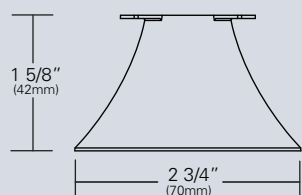
**LX-M90-REF-CLR (M9)**  
**(70mm/20°)**  
**(Wide Field Angle)**

Computer designed polycarbonate specular optic. Tool-less, twist and lock installation. Aluminized finish.



**LX-M80-REF-CLR (M8)**  
**(70mm/40°)**  
**(Wide Field Angle)**

Computer designed polycarbonate specular optic. Tool-less, twist and lock installation. Aluminized finish.



**LX-M60-REF-CLR (M6)**  
**(70mm/60°)**

Computer designed polycarbonate specular optic. Tool-less, twist and lock installation. Aluminized finish.

# LX2044 • PHOTOMETRIC DATA

**LED RATING: 13-98**

**M2- 70mm DIA Optic**  
(NFA: Narrow Field Angle)  
Beam Spread (minimum) **20°**  
Center Beam Candlepower **4257**  
CRI **98**

**WR- 70mm DIA Optic**  
(FR: Field Reducer)  
Beam Spread (minimum) **15°**  
Center Beam Candlepower **3237**  
CRI **98**

**M4- 70mm DIA Optic**  
(NFA: Narrow Field Angle)  
Beam Spread (minimum) **35°**  
Center Beam Candlepower **3171**  
CRI **98**

**M6- 70mm DIA Optic**  
(NFA: Narrow Field Angle)  
Beam Spread (minimum) **60°**  
Center Beam Candlepower **1312**  
CRI **98**

**M8- 70mm DIA Optic**  
(WFA: Wide Field Angle)  
Beam Spread (minimum) **40°**  
Center Beam Candlepower **1927**  
CRI **98**

**M9- 70mm DIA Optic**  
(WFA: Wide Field Angle)  
Beam Spread (minimum) **20°**  
Center Beam Candlepower **3913**  
CRI **98**

**LED RATING: 20-83**

**M2- 70mm DIA Optic**  
(NFA: Narrow Field Angle)  
Beam Spread (minimum) **20°**  
Center Beam Candlepower **6549**  
CRI **83**

**WR- 70mm DIA Optic**  
(FR: Field Reducer)  
Beam Spread (minimum) **15°**  
Center Beam Candlepower **4980**  
CRI **83**

**M4- 70mm DIA Optic**  
(NFA: Narrow Field Angle)  
Beam Spread (minimum) **35°**  
Center Beam Candlepower **4878**  
CRI **83**

**M6- 70mm DIA Optic**  
(NFA: Narrow Field Angle)  
Beam Spread (minimum) **60°**  
Center Beam Candlepower **2018**  
CRI **83**

**M8- 70mm DIA Optic**  
(WFA: Wide Field Angle)  
Beam Spread (minimum) **40°**  
Center Beam Candlepower **2964**  
CRI **83**

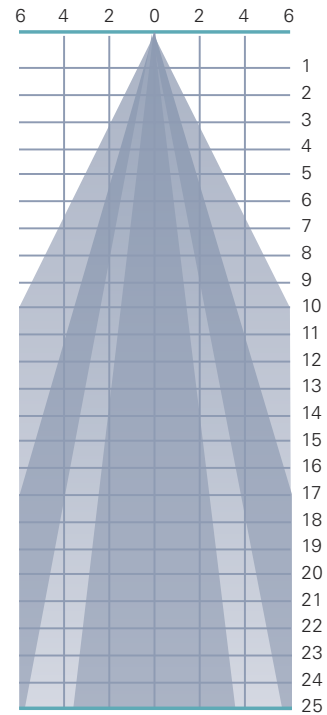
**M9- 70mm DIA Optic**  
(WFA: Wide Field Angle)  
Beam Spread (minimum) **20°**  
Center Beam Candlepower **6020**  
CRI **83**

**LED RATING: 13-98**

All Max. Footcandles at 0° Beam Axis

M6 (60°) NFA	M8 (40°) WFA	M4 (35°) NFA	M9 (20°) WFA	WR (15°) FR	M2 (20°) NFA
1312	1927	3171	3913	3237	4257
328	482	793	978	809	1064
146	214	352	435	360	473
82	120	198	245	202	266
52	77	127	157	129	170
36	54	88	109	90	118
27	39	65	80	66	87
21	30	50	61	51	67
16	24	39	48	40	53
13	19	32	39	32	43
11	16	26	32	27	35
9	13	22	27	22	30
8	11	19	23	19	25
7	10	16	20	17	22
6	9	14	17	14	19
5	8	12	15	13	17
5	7	11	14	11	15
4	6	10	12	10	13
4	5	9	11	9	12
3	5	8	10	8	11
3	4	7	9	7	10
3	4	7	8	7	9
2	4	6	7	6	8
2	3	6	7	6	7
2	3	5	6	5	7

All Distances in Feet



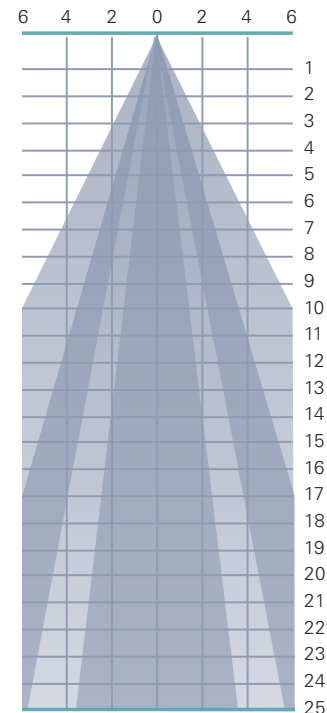
Photometric Data based on LED Rating: 13-98 (1300 Lumens/98CRI/20watts)  
\*WFA Optics not represented in graph

**LED RATING: 20-83**

All Max. Footcandles at 0° Beam Axis

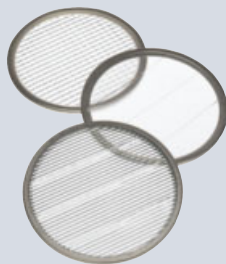
M6 (60°) NFA	M8 (40°) WFA	M4 (35°) NFA	M9 (20°) WFA	WR (15°) FR	M2 (20°) NFA
2018	2964	4878	6020	4980	6549
505	741	1220	1505	1245	1637
224	329	542	669	553	728
126	185	305	376	311	409
81	119	195	241	199	262
56	82	136	167	138	182
41	60	100	123	102	134
32	46	76	94	78	102
25	37	60	74	61	81
20	30	49	60	50	65
17	24	40	50	41	54
14	21	34	42	35	45
12	18	29	36	29	39
10	15	25	31	25	33
9	13	22	27	22	29
8	12	19	24	19	26
7	10	17	21	17	23
6	9	15	19	15	20
6	8	14	17	14	18
5	7	12	15	12	16
5	7	11	14	11	15
4	6	10	12	10	14
4	6	9	11	9	12
4	5	8	10	9	11
3	5	8	10	8	10

All Distances in Feet



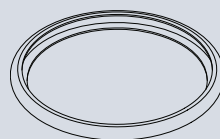
Photometric Data based on LED Rating: 20-83 (2000 Lumens/83CRI/23watts)  
\*WFA Optics not represented in graph

# LX2044 • ACCESSORIES



## SPREAD LENSES AND BEAM SOFTENER

No.	Description	% of Light Transmission
AA990	Spread Lens/Clear	83 (5°X 50°)
AA992	Spread Lens/Clear	85 (5°X 30°)
AA995	Spread Lens/Clear	83 (50°X 50°)
AA996	Spread Lens/Clear	86 (45°X 50°)
AA998	Beam Softener/Clear	80 (45°X 45°)



## BACKER RING AAB

Aluminum ring to hold gel when no other size AA accessories is being used. Black finish.



## 1 LIGHT BLOCKING SCREENS AA

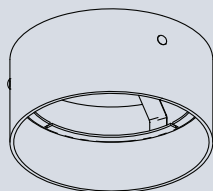
Stainless steel mesh screens used alone or in combinations will block from approximately 20% to 90% of the transmitted light without changing color temperature of the light

No.	% of Light Blocked
AA801S	20
AA802S	30
AA803S	40



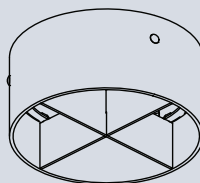
## LOUVER HEX AA

1/8" thick Hexcell black metal louver used for thin profile. Black finish.



## HOOD-EXT-LX44-NXB-X

Cylindrical metal hood controls spill light and glare. Does not include cross baffle. Specify finish.



## HOOD-EXT-LX44-WXB-X

Cylindrical metal hood controls spill light and glare. Includes cross baffle. Specify finish.

1. Figures vary based upon LED Module/Optic being used and relationship of screen(s) to LED Module/Optic and to each other.

# LX2044 • GELS

As the foremost innovator in accent lighting, LSI offers a complete range of pre-cut Gels to modify the spread and color of light for the LumeLEX LED Series.



## LumeLEX® SPREAD GELS

Size: AA (76 mm diameter)	Spread Gel
GEL-L1-AA	1° Spread Gel
GEL-L5-AA	5° Spread Gel
GEL-L10-AA	10° Spread Gel
GEL-L20-AA	20° Spread Gel
GEL-L30-AA	30° Spread Gel
GEL-L40-AA	40° Spread Gel
GEL-L60-AA	60° Spread Gel
GEL-L80-AA	80° Spread Gel
GEL-L30B5-AA	30° by 5° Spread Gel
GEL-L40B2-AA	40° by 0.2° Spread Gel
GEL-L60B1-AA	60° by 1° Spread Gel
GEL-L60B10-AA	60° by 10° Spread Gel
GEL-L75B45-AA	75° by 45° Spread Gel
GEL-L90B60-AA	90° by 60° Spread Gel
GEL-R101-AA	Beam Softener

## LumeLEX® COLOR GELS

Size: AA (76 mm diameter)	Gel Color	% of Light Transmission	Size: AA (76 mm diameter)	Gel Color	% of Light Transmission
GEL-R2-AA	Bastard Amber	78	GEL-R312-AA	Canary	85
GEL-R7-AA	Pale Yellow	96	GEL-R3204-AA	Half Blue	52
GEL-R12-AA	Straw	88	GEL-R331-AA	Shell Pink	68
GEL-R13-AA	Straw Tint	78	GEL-R383-AA	Sapphire Blue	4
GEL-R14-AA	Medium Straw	68	GEL-R397-AA	Pale Grey	70
GEL-R21-AA	Golden Amber	43	GEL-R2001-AA	Storaro Red	12
GEL-R25-AA	Orange Red	14	GEL-R2004-AA	Storaro Green	15
GEL-R26-AA	Light Red	12	GEL-R2009-AA	Storaro Violet	3
GEL-R27-AA	Medium Red	4	GEL-R3202-AA	Full Blue	36
GEL-R57-AA	Lavender	24	GEL-R3206-AA	Third Blue	64
GEL-R62-AA	Booster Blue	54	GEL-R3216-AA	Eighth Blue (Boosts 3200K to 3300K)	81
GEL-R71-AA	Sea Blue	30	GEL-R3318-AA	Tough 1/8 Minusgreen	89
GEL-R72-AA	Azure Blue	44	GEL-R3410-AA	Roscocosun (1/8 CTO) (Reduces 5500K to 4900K)	92
GEL-R91-AA	Primary Green	7	GEL-R3441-AA	Full Straw (CTS)	50
GEL-R97-AA	Light Grey	50	GEL-R3443-AA	Quarter Straw (CTS)	81
GEL-R98-AA	Medium Grey	25	GEL-R4330-AA	CalColor 30 Cyan	63
GEL-R101-AA	Light Frost	N/A	GEL-R4415-AA	CalColor 15 Green	67
GEL-R104-AA	Tough Silk	N/A	GEL-R4490-AA	CalColor 90 Green	25
GEL-R119-AA	Lt. Hamburg Frost	N/A	GEL-R4860-AA	CalColor 60 Pink	46
GEL-R121-AA	Blue Diffusion	N/A	GEL-R4890-AA	CalColor 90 Pink	38
GEL-R305-AA	Rose Gold	75	GEL-R4930-AA	CalColor 30 Lavender	47

\* Backer Ring AAB required to hold gels when no other rimmed "AA" accessories are used.

Type	ROSCO #	ROSCO Description	Resulting CCT
Amber Filters Lower CCT	3420	Double CTO	1531
	3407	Sun CTO	1999
	3401	Sun 85	2154
	3411	Sun 3/4 CTO	2154
	3408	Sun 1/2 CTO	2414
	3409	Sun 1/4 CTO	2664
	3410	Sun 1/8 CTO	2830
	3114	UV Filter	2930
Blue Filters Raise CCT	3220	Double Blue	N/A
	3202	Full Blue	4942
	3203	Three-Quarter Blue	4286
	3204	Half Blue	3769
	3206	Third Blue	3517
	3208	Quarter Blue	3297
	3216	Eighth Blue	3112



# COLOR MEDIA

## COLOR FILTERS

As the foremost innovator in accent lighting, LSI offers a complete range of permanent fade-free glass color filters, which are available in nine stock diameters. All glass color filters are rimmed in a seamless aluminum ring and are slotted for heat expansion.



Size	Diameter	LSI Fixture Series	No.	Color	% of Light Transmission
AAA	2 3/8"	LumeLEX® 2020/2030/2031/2038, SSLCX16, SSL260, LumeLEX MAR-S	902	Medium Pink	36
			903	Deep Pink	37
			904	Flesh Pink	73
ZM	2 13/16"	LZ Zoom	906	Pale Lavender	14
			907	Surprise Pink	19
AA	3"	LumeLEX® 2024 (with LX2024-Holder or LX2024-Barndoor), LumeLEX® 2026, LumeLEX® 2044, LumeLEX 2048	908	Lilac	21
			910	Warm Red	10
			911	Strawberry	6
			912	Ruby	4
A	3 1/2"	LumeLEX® 2060, SSL230, SSLCX30, SSLGR30CL, SSLGR36	913	Magenta	1
			914	Light Amethyst	25
B	4 1/4"	LumeLEX® MAR-L	915	Medium Amethyst	16
			916	Deep Amethyst	4
			917	Olive	18
C	4 3/4"	LumeLEX® 2084, LumeLEX® 2088, SSL238, SSLCX36, SSLCX38, SSLGR38CL	918	Light Green	68
			920	Medium Green	25
			921	Deep Green	7
			922	Silver green	65
			923	Yellow Green	49
			924	Emerald Green	12
			925	Light Turquoise	68
			926	Medium Turquoise	40
			927	Deep Turquoise	17
			928	Light Blue	34
			930	Medium Blue	3
			932	Daylight	59
			933	Gene Moore Blue	18
			936	Grey	56
			937	Light Blue Green	17
			939	Light Amber	68
			940	Medium Amber	48
			941	Deep Amber	43
			942	Straw	78
			943	Gold	87
			944	Canary Yellow	84
			945	Lemon	81
			946	Pumpkin	32
			947	Tangerine	20
			948	Orange	23
			949	Pink Gold	54
			950	Bronze	48
			951	Brass	11
			952	Autumn Tan	11
			953	Leaf Brown	19
			954	Butter Pecan	3
			955	Toasted Almond	1

**Notes:**

1. Values given are approximate due to slight variations in glass color and thickness.

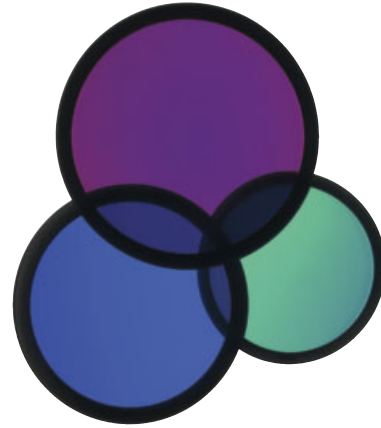
# COLOR MEDIA

## DICHROIC COLOR FILTERS

In addition to our complete line of glass color filters, LSI now offers dichroic glass color filters that achieve purer, more saturated, richer color by selective wavelength transmission. Since these filters reflect rather than absorb the unwanted color wavelengths, a higher intensity of colored light can be obtained with fewer or lower wattage fixtures. In addition, this selective transmission allows for very accurate color matching from filter to filter.

All standard LSI filter sizes are available in a wide palette of well chosen dichroic colors that can be used with all LSI fixtures that accept accessories.

LSI dichroic glass color filters have the added benefit of being rimmed for extra durability to allow for frequent usage without fear of breakage or edge chipping.



Size	Diameter	LSI Fixture Series	Technical Data	No.	Color	% of Light Transmission
AAA	2 3/8"	LumeLEX® 2020/2030/2031/2038, SSLCX16, SSL260, LumeLEX MAR-S	Dichroic color filters are created in a vacuum chamber by multi-layer vapor deposits of different minerals onto low expansion, chemically resistant Borosilicate glass.	2001	Light Pink	69
ZM	2 13/16"	LZ Zoom	Deposits are made in alternating layers of varying microscopic thickness which allow very narrow color wavelengths to be selectively transmitted and all other wavelengths to be reflected.	2002	Medium Pink	43
AA	3"	LumeLEX® 2024 (with LX2024-Holder or LX2024-Barndoor), LumeLEX® 2026, LumeLEX® 2044, LumeLEX 2048	LSI does not recommend using dichroic color filters with lamps or fixtures that have beam spreads greater than 40° because a secondary color aura is created by the wide angular transmitted wavelengths that are different than the desired color wavelength.	2003	Hot Pink	11
A	3 1/2"	LumeLEX® 2060, SSL230, SSLCX30, SSLGR30CL, SSLGR36	Since there is mainly transmission and reflection of the color wavelengths by the dichroic filter and very little absorption, the dichroic filter can be used with many high temperature lights that normally would not accept color filters.	2004	Pale Pink	55
B	4 1/4"	LumeLEX® MAR-L		2010	Deep Magenta	29
C	4 3/4"	LumeLEX® 2084, LumeLEX® 2088, SSL238, SSLCX36, SSLCX38, SSLGR38CL		2011	Lavender	24
				2012	Vivid Magenta	31
				2013	Lavender Accent	48
				2014	Lilac	37
				2015	Purple Fusion	12
				2020	Sky Blue	39
				2021	Sea Blue	39
				2022	Cyan	33
				2023	Light Blue Green	30
				2024	Primary Blue	24
				2025	Medium Red Blue	15
				2026	Deep Purple	16
				2027	Peacock Blue	53
				2028	Mediterranean Blue	20
				2029	Boost Blue	51
				2040	Light Yellow Green	64
				2041	Fern Green	47
				2042	Turquoise	35
				2043	Primary Green	31
				2044	Industrial Green	64
				2050	Yellow	80
				2051	Amber	71
				2052	Amber Blush	38
				2053	Bastard Amber	71
				2054	Goldenrod	63
				2055	Bright Straw	56
				2060	Medium Orange	51
				2061	Orange	44
				2070	Flame Red	27
				2071	Primary Red	25