

# LX2048 • 120/277V • LED • DIM TO WARM



## Elegant fixed downlight designed specifically for the most demanding architecture applications.

- Designed for a Dim to Warm module up to 22 Watts
- Natural dimming that approximates the black body curve
- System efficiency up to 59 lumens/watt
- 36,000 hour life to 70% lumen output, L70 at 95°F max ambient
- Halogen mimicking color from 2800°K to 2000°K
- Color Rendering Index (CRI) of 92 min. at all dimming settings
- Color Fidelity (R<sub>f</sub>) 92
- Gamut Area Index (R<sub>g</sub>) 102
- Lumen output: 1800 Lumens
- Proprietary mixing optics for smooth even light
- Tested to LM79 and LM80 Protocols, TM-30 available
- Hidden integral electronic driver compatible with reverse phase (ELV compatible) dimmers down to 5%
- Field interchangeable optics (15°- 50°) modify the beam spread distribution
- Integral black polycarbonate accessory cartridge accepts up to two size-AA LSI filters and accessories
- Integral dimmer available
- Finishes: LSI Black, White, and Silver
- Fixture weight: 3 lbs
- All modules are field replaceable
- Fixed center stem

## MOUNTING OPTIONS

Please review the **ORDERING INFORMATION** section on the next page on how to specify the following:

- LED Module
- LED Rating
- Color Temperature
- Optic - mm/beam spread
- Dimming
- Voltage
- Finish

### LX2048-XXXXX-XXXXXX-00-XXXXXX

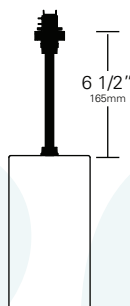
Lexan fitting for 1 and 2 circuit LSI track. With On/Off switch.

### LX2048-XXXXX-XXXXXX-0E-EDXXXX

Lexan fitting with integral dimmer (for use with ED dimming driver 10%).

### LX2048-XXXXX-XXXXXX-LT-LTXXXX

Lexan fitting with LumenTalk dimmer (for use with LT dimming driver (<1%).

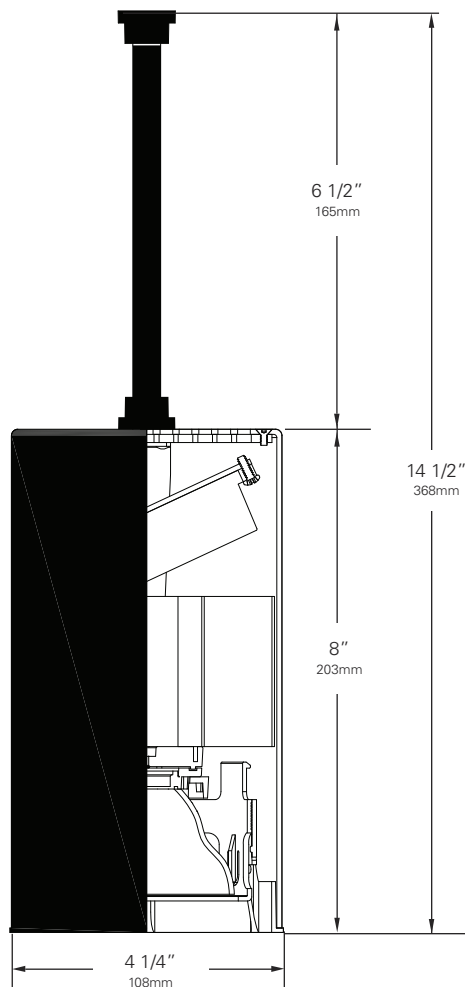


### LX2048-XXXXX-XXXXXX-5A-XXXXXX

Canopy for permanent mounting on standard 4" octagonal junction boxes.

### Other Options (Consult Factory):

- Custom Stems, specify length (4"- 48")
- Custom color, RAL palette
- Security/Worklite Fixture, add suffix —**EF00** (track) mounting option only.

**LX2048** • 120/277V • LED • DIM TO WARM**ORDERING INFORMATION****Dim to Warm Fixture**

1. Choose the desired LED Module **(D15)** for Dim to Warm (15mm)
2. Choose the numeric code to designate the desired LED Rating **Lumens/CRI/Wattage (18-92)** for 1800/92/22
3. Choose the alpha code to designate the desired **Color Temperature (DW)** for 2800K to 2000K
4. Use the following alpha-numeric code to designate the **Optic (W2)** for 72mm/20°      **(WR)** for 70mm/15° (Field Reducer)  
**(W3)** for 72mm/30°      **(W4)** for 72mm/40°  
**(W5)** for 72mm/50°
5. Select your **Mounting Option (00)** Track Fitting      **(0E)** Track Fitting with Integral Dimmer  
**(LT)** Lumentalk Fitting      **(5A)** Canopy Fitting
6. Choose the letter code for **Dimming Type: (TE)** Trailing Edge (Reverse Phase) (5%)  
**(ED)** Integral Dimming (10%) (0E & 5A fitting only)  
**(LT)** Lumentalk (<1%) (LT fitting only)  
**(10)** 0-10V (10%) (5A fitting only)
7. Choose the desired **Voltage: (120)** for 120V      **(230)** for 220-240V      **(277)** for 277V
8. Choose a **Finish** for your fixture: Black **(B)**    White **(W)**    Silver **(S)**

Example:

**LX2048 - D15 18-92 DW W2 - 00 - TE 120 B**  
FIXTURE LED MODULE LED RATING COLOR TEMP OPTIC FITTING DIMMING VOLTAGE FINISH

9. Don't forget your Accessories!

**Chromaticity Specifications**

LED	R <sub>a</sub> -CRI	R <sub>f</sub> -Fidelity	R <sub>g</sub> -Gamut Area
D15	92	92	102

**ACCESSORIES**

- **LX-WRD-CLR (70mm/15°)**  
Field Reducer
- **LX-W20-REF-CLR (72mm/20°)**
- **LX-W30-REF-CLR (72mm/30°)**
- **LX-W40-REF-CLR (72mm/40°)**
- **LX-W50-REF-CLR (72mm/50°)**
- **HOOD-EXT-LX44-NXB-X**
- **HOOD-EXT-LX44-WXB-X**
- **Spread Gels AA**
- **Backer Ring AAB**
- **Louver Hex AA**
- **Beam Softener AA998**
- **Lighting Blocking Screens AA801S, AA802S, AA803S**
- **Spread Lenses AA990, AA992, AA995, AA996**

# LX2048 • PERFORMANCE

The performance characteristics of the Dim to Warm LumeLEX family of products can be customized based on the optic (reflector) selected.

The behavior of the Dim to Warm modules links the color of the light to the dimmed output of the fixture just like a halogen or incandescent source. Therefore the four characteristics defining the color — the color rendering index (CRI), the correlated color temperature (CCT) range, the power that it uses (watts), and its “available lumens” — are linked to the dim setting. Note that available lumens is a theoretical value that represents the light output of the module on its own — no fixture or optic attached. Also note that the CRI of this fixture is a minimum of 92 at any dimming setting.

In the LSI part number, the LED module is specified with a letter and a number that immediately follow the product series number. For example, in the part number LX2048-D1518-92DWW2-00-TE220B, the “D1518-92DW” represents a Dim to Warm LED module with an output of 1800 lumens, a CRI of 92, a power usage of 22 watts and a color temperature range of 2800K – 2000K that is tied to the dimming setting.

The available optics (reflectors) are characterized by size, beam angle, and in some cases the characteristics of the field angle (narrow or wide). The optic is specified by the two characters that follow the LED designation in the part number. For example, the “W2” in LX2048-D1518-92DWW2-00-TE120B is a 70mm diameter optic that has a 20-Degree beam.

Additional parameters, such as Center Beam Candle Power (CBCP), Delivered Lumens, and Efficiency (Lumens per Watt) are all shown in a table that is organized by LED module and optic combination.

CBCP = Center Beam Candle Power					
LED Module	Optic (Reflector)				
Lumens/CRI/Wattage	W2	WR	W3	W4	W5
1800/92/22	7350	5512	4201	2991	2292

Delivered Lumens					
LED Module	Optic (Reflector)				
Lumens/CRI/Wattage	W2	WR	W3	W4	W5
1800/92/22	1265	506	1212	1226	1305

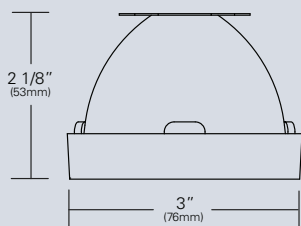
Efficiency = Lumens Per Watt					
LED Module	Optic (Reflector)				
Lumens/CRI/Wattage	W2	WR	W3	W4	W5
1800/92/22	57	23	55	56	59

*Absolute range of values are +/- 10% of typical value, and are for all color temperatures*

LED Module Lumens/CRI/Wattage SKU Code	1800/92/22 18-92
Nominal Fixture Power (+/- 20%), Watts	22
Maximum Inrush Current Amps	10
Minimum Power Factor	0.92

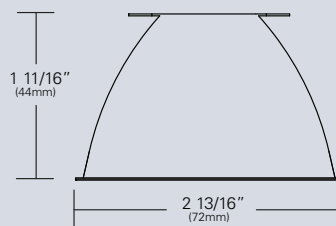
*Inrush current is instantaneous current drawn by the LED only when fixture is initially powered on or instantaneously changed from full dim to full bright. For more details see Dimming Application Sheet, IS-0119.*

# LX2048 • OPTICS



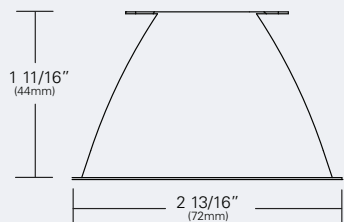
**LX-WRD-REF-CLR (WR)**  
**(70mm/15°)**

Field reducer. Proprietary field reducing baffle (black) with aluminized reflector. Tool-less, twist and lock installation.



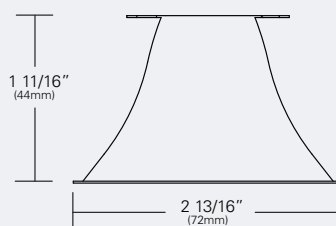
**LX-W20-REF-CLR (W2)**  
**(72mm/20°)**

Faceted reflectively coated metal optic. Tool-less twist and lock installation. Aluminized finish.



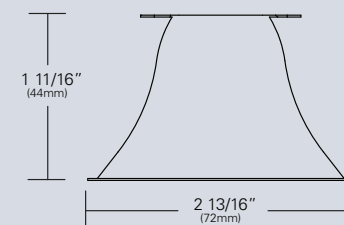
**LX-W30-REF-CLR (W3)**  
**(72mm/30°)**

Faceted reflectively coated metal optic. Tool-less twist and lock installation. Aluminized finish.



**LX-W40-REF-CLR (W4)**  
**(72mm/40°)**

Faceted reflectively coated metal optic. Tool-less twist and lock installation. Aluminized finish.



**LX-W50-REF-CLR (W5)**  
**(72mm/50°)**

Faceted reflectively coated metal optic. Tool-less twist and lock installation. Aluminized finish.

# LX2048 • PHOTOMETRIC DATA

**LED RATING: 18-92**

**WR-70mm DIA Optic**

Beam Spread (minimum)  
(FR: Field Reducer)  
Center Beam Candlepower  
CRI

**15°**  
**5572**  
**92**

**W2-72mm DIA Optic**

Beam Spread (minimum)  
Center Beam Candlepower  
CRI

**20°**  
**7350**  
**92**

**W3-72mm DIA Optic**

Beam Spread (minimum)  
Center Beam Candlepower  
CRI

**30°**  
**4201**  
**92**

**W4-72mm DIA Optic**

Beam Spread (minimum)  
Center Beam Candlepower  
CRI

**40°**  
**2991**  
**92**

**W5-72mm DIA Optic**

Beam Spread (minimum)  
Center Beam Candlepower  
CRI

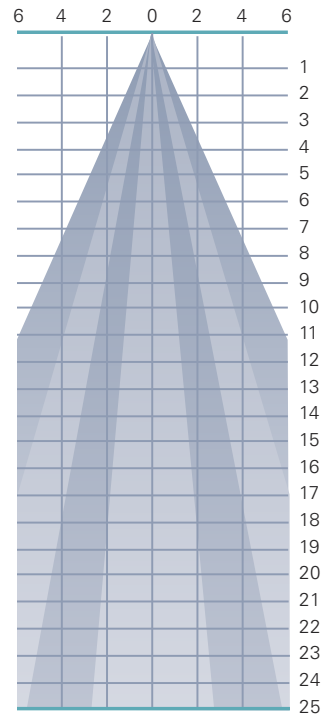
**50°**  
**2292**  
**92**

**LED RATING: 25-92**

All Max. Footcandles at 0° Beam Axis

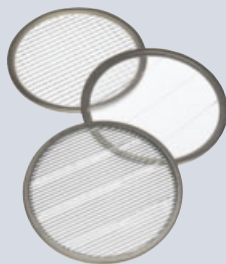
	W5 (50°)	W4 (40°)	W3 (30°)	W2 (20°)	WR (15°) FR
2292	2991	4201	7350	5572	
573	748	1050	1838	1393	
255	332	467	817	619	
143	187	263	459	348	
92	120	168	294	223	
64	83	117	204	155	
47	61	86	150	114	
36	47	66	115	87	
28	37	52	91	69	
23	30	42	74	56	
19	25	35	61	46	
16	21	29	51	39	
14	18	25	43	33	
12	15	21	38	28	
10	13	19	33	25	
9	12	16	29	22	
8	10	15	25	19	
7	9	13	23	17	
6	8	12	20	15	
6	7	11	18	14	
5	7	10	17	13	
5	6	9	15	12	
4	6	8	14	11	
4	5	7	13	10	
4	5	7	12	9	

**All Distances in Feet**



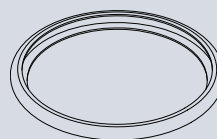
Photometric Data based on LED Rating: 18-92 (1800 Lumens/92CRI/22watts)

# LX2048 • ACCESSORIES



## SPREAD LENSES AND BEAM SOFTENER

No.	Description	% of Light Transmission
AA990	Spread Lens/Clear	83 (5°X 50°)
AA992	Spread Lens/Clear	85 (5°X 30°)
AA995	Spread Lens/Clear	83 (50°X 50°)
AA996	Spread Lens/Clear	86 (45°X 50°)
AA998	Beam Softener/Clear	80 (45°X 45°)



## BACKER RING AAB

Aluminum ring to hold gel when no other size AA accessories is being used. Black finish.



## 1 LIGHT BLOCKING SCREENS AA

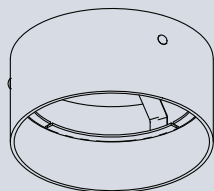
Stainless steel mesh screens used alone or in combinations will block from approximately 20% to 90% of the transmitted light without changing color temperature of the light

No.	% of Light Blocked
AA801S	20
AA802S	30
AA803S	40



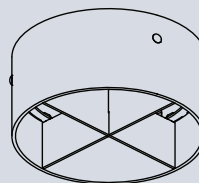
## LOUVER HEX AA

1/8" thick Hexcell black metal louver used for thin profile. Black finish.



## HOOD-EXT-LX44\_NXB-X

Cylindrical metal hood controls spill light and glare. Does not include cross baffle. Specify finish.



## HOOD-EXT-LX44\_WXB-X

Cylindrical metal hood controls spill light and glare. Includes cross baffle. Specify finish.

1. Figures vary based upon LED Module/Optic being used and relationship of screen(s) to LED Module/Optic and to each other.

# LX2048 • GELS

As the foremost innovator in accent lighting, LSI offers a complete range of pre-cut Gels to modify the spread and color of light for the LumeLEX LED Series.



## LumeLEX® SPREAD GELS

Size: AA (76 mm diameter)	Spread Gel
GEL-L1-AA	1° Spread Gel
GEL-L5-AA	5° Spread Gel
GEL-L10-AA	10° Spread Gel
GEL-L20-AA	20° Spread Gel
GEL-L30-AA	30° Spread Gel
GEL-L40-AA	40° Spread Gel
GEL-L60-AA	60° Spread Gel
GEL-L80-AA	80° Spread Gel
GEL-L30B5-AA	30° by 5° Spread Gel
GEL-L40B2-AA	40° by 0.2° Spread Gel
GEL-L60B1-AA	60° by 1° Spread Gel
GEL-L60B10-AA	60° by 10° Spread Gel
GEL-L75B45-AA	75° by 45° Spread Gel
GEL-L90B60-AA	90° by 60° Spread Gel
GEL-R101-AA	Beam Softener

\* Backer Ring AAB required to hold gels when no other rimmed "AA" accessories are used.