

# LX2048 • 120/277V • LED • XICATO 9MM



## Elegant fixed downlight designed specifically for the most demanding architecture applications.

- Designed for the Xicato XTM 9mm LED module up to 22 Watts
- Extremely tight color consistency (less than 2 MacAdam Ellipses)
- System efficiency up to 50 lumens/watt
- Backed by Xicato's Five Year Color Consistency and Lumen Maintenance Warranty
- 50,000 hour life to 70% lumen output, L70 at 95°F max ambient
- Choice of color temperature
- Color Rendering Index (CRI) of either 98 (high) or 83 (standard)
- Color Fidelity (R<sub>f</sub>) 96 (high) or 78 (standard)
- Gamut Area Index (R<sub>g</sub>) 103 (high) or 101 (standard)
- Choice of lumen outputs (delivered lumens)
- Tested to LM79 and LM80 Protocols, TM-30 available
- Hidden integral electronic driver compatible with reverse phase (ELV compatible) dimmers down to 5%
- Field interchangeable optics (10°- 60°) modify the beam spread distribution
- Integral black polycarbonate accessory cartridge accepts up to two size-AA LSI filters and accessories
- Integral dimmer available
- Finishes: LSI Black, White, and Silver
- Fixture weight: 3 lbs
- All modules are field replaceable
- Fixed center stem

## MOUNTING OPTIONS

Please review the **ORDERING INFORMATION** section on the next page on how to specify the following:

- LED Module
- LED Rating
- Color Temperature
- Optic - mm/beam spread
- Dimming
- Voltage
- Finish

### LX2048-XXXXX-XXXXXX-00-XXXXXX

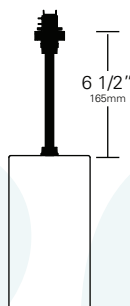
Lexan fitting for 1 and 2 circuit LSI track. With On/Off switch.

### LX2048-XXXXX-XXXXXX-0E-EDXXXX

Lexan fitting with integral dimmer (for use with ED dimming driver 10%).

### LX2048-XXXXX-XXXXXX-LT-LTXXXX

Lexan fitting with LumenTalk dimmer (for use with LT dimming driver (<1%).

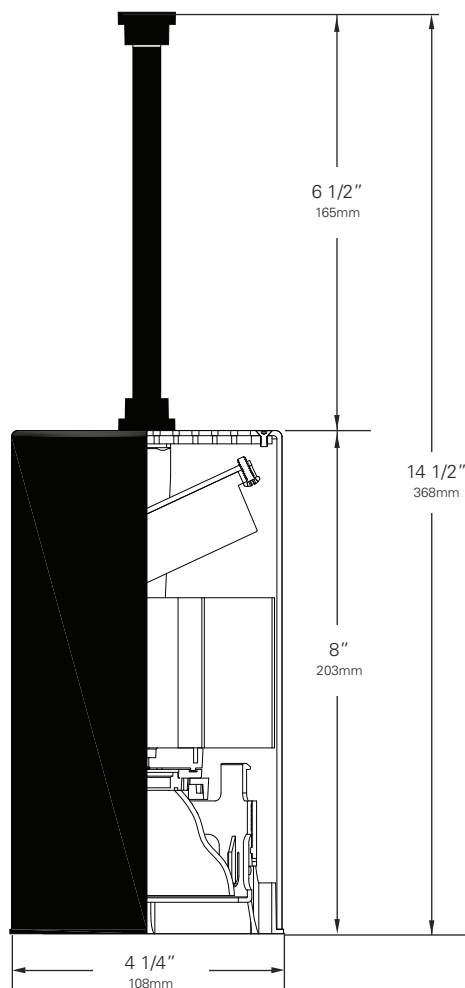


### LX2048-XXXXX-XXXXXX-5A-XXXXXX

Canopy for permanent mounting on standard 4" octagonal junction boxes.

### Other Options (Consult Factory):

- Custom Stems, specify length (4" - 48")
- Custom color, RAL palette
- Security/Worklite Fixture, add suffix —**EF00** (track) mounting option only.

**LX2048** • 120/277V • LED • XICATO 9MM**ORDERING INFORMATION****Xicato XTM 9mm Fixture**

1. Choose the desired LED Module **(TS9)** for XTM (9mm)
2. Choose the numeric code to designate the desired LED Rating  
**Lumens/CRI/Wattage**  
**(07-98)** for 700/98/13    **(09-83)** for 900/83/14  
**(09-98)** for 900/98/22    **(13-83)** for 1300/83/22
3. Choose the code to designate the desired  
**Color Temperature**  
**(27)** for 2700K    **(30)** for 3000K    **(35)** for 3500K  
**(40)** for 4000K    For other CCT, consult factory
4. Use the following alpha-numeric code to designate the **Optic**  
**(N1)** for 70mm/10°  
**(NR)** for 70mm/10°(Field Reducer)  
**(N2)** for 70mm/20°  
**(N4)** for 70mm/40°  
**(N6)** for 70mm/60°
5. Select your **Mounting Option**  
**(00)** Track Fitting    **(0E)** Track Fitting with Integral Dimmer  
**(LT)** Lumentalk Fitting    **(5A)** Canopy Fitting
6. Choose the letter code for **Dimming Type:**  
**(TE)** Trailing Edge (Reverse Phase) (5%)  
**(ED)** Integral Dimming (10%) (0E & 5A fitting only)  
**(LT)** Lumentalk (<1%) (LT fitting only)  
**(10)** 0-10V (10%) (5A fitting only)
7. Choose the desired **Voltage:**  
**(120)** for 120V    **(230)** for 220-240V    **(277)** for 277V
8. Choose a **Finish** for your fixture:  
Black **(B)**    White **(W)**    Silver **(S)**

Example: **LX2048 - TS9 13-83 27 N2 - 00 - TE 120 B**

FIXTURE    LED MODULE    LED RATING    COLOR TEMP    OPTIC    FITTING    DIMMING    VOLTAGE    FINISH

9. Don't forget your Accessories!

**Chromaticity Specifications**

LED	R <sub>a</sub> - CRI	R <sub>f</sub> - Fidelity	R <sub>g</sub> - Gamut Area
T19-TS9 - 83	83	78	101
T19-TS9 - 98	98	96	103

**ACCESSORIES**

- **LX-N10-REF-CLR (70mm/10°)**
- **LX-NRD-REF-CLR (70mm/10°) Field Reducer**
- **LX-N20-REF-CLR (70mm/20°)**
- **LX-N40-REF-CLR (70mm/40°)**
- **LX-N60-REF-CLR (70mm/60°)**
- **HOOD-EXT-LX44-NXB-X**
- **HOOD-EXT-LX44-WXB-X**
- **ANG Hood 2IN AA**
- **Hood 2IN AA**
- **Glass Color Filters AA**
- **Color and Spread Gels AA**
- **Backer Ring AAB**
- **Louwer Hex AA**
- **Beam Softener AA998**
- **Light Blocking Screens AA801S, AA802S, AA803S**
- **Spread Lens AA990, AA992, AA995, AA996**

# LX2048 • PERFORMANCE

The performance characteristics of the LumeLEX family of products can be customized based on the LED module and the optic (reflector) selected.

Each available LED module is defined by four characteristics – the color rendering index (CRI), the correlated color temperature (CCT), the power that it uses (watts), and its “available lumens.” Note that available lumens is a theoretical value that represents the light output of the module on its own – no fixture or optic attached.

In the LSI part number, the LED module is specified with a letter and a number that immediately follow the product series number. For example, in the part number LX2048-TS913-8327N1-00-TE120B, the “TS913-8327” represents an LED module with an output of 1300 lumens, a CRI of 83, a power usage of 22 watts and a color temperature of 2700K.

The available optics (reflectors) are characterized by size, beam angle, and in some cases the characteristics of the field angle (narrow or wide). The optic is specified by the two characters that follow the LED designation in the part number. For example, the “N1” in TS913-8327N1-00-TE120B is a 70mm diameter optic that has a 10-Degree beam.

Additional parameters, such as Center Beam Candle Power (CBCP), Delivered Lumens, and Efficiency (Lumens per Watt) are all shown in a table that is organized by LED module and optic combination.

CBCP = Center Beam Candle Power					
LED Module	Optic (Reflector)				
Lumens/CRI/Wattage	N1	NR	N2	N4	N6
700/98/13	7338	5346	1590	948	576
900/83/14	11007	8019	2385	1422	864
900/98/22	11007	8019	2385	1422	864
1300/83/22	15899	11583	3445	2054	1248

Delivered Lumens					
LED Module	Optic (Reflector)				
Lumens/CRI/Wattage	N1	NR	N2	N4	N6
700/98/13	468	186	438	462	444
900/83/14	702	279	657	693	666
900/98/22	702	279	657	693	666
1300/83/22	1014	403	949	1001	962

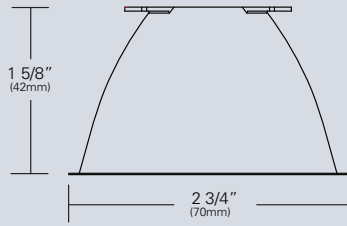
Efficiency = Lumens Per Watt					
LED Module	Optic (Reflector)				
Lumens/CRI/Wattage	N1	NR	N2	N4	N6
700/98/13	36	14	34	36	34
900/83/14	50	20	47	50	48
900/98/22	32	13	30	32	30
1300/83/22	46	18	43	46	44

*Absolute range of values are +/- 10% of typical value, and are for all color temperatures*

LED Module <small>LUMENS/WATTAGE</small> Letter Code	<small>GROUP 3</small> 06-98	<small>GROUP 4</small> 09-83	<small>GROUP 2</small> 09-98	<small>GROUP 2</small> 13-83
Nominal Fixture Power (+/- 20%), Watts	13	14	22	22
Maximum Inrush Current Amps	10	10	10	10
Minimum Power Factor	0.92	0.92	0.92	0.92

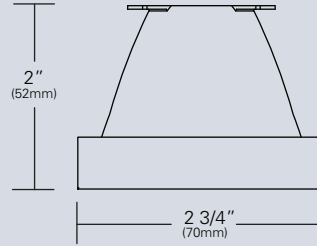
*Inrush current is instantaneous current drawn by the LED only when fixture is initially powered on or instantaneously changed from full dim to full bright. For more details see Dimming Application Sheet, IS-0119.*

# LX2048 • OPTICS



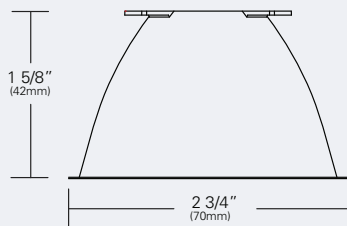
**LX-N10-REF-CLR (N1)**  
**(70mm/10°)**

Faceted reflectively coated metal optic. Tool-less twist and lock installation. Clear finish.



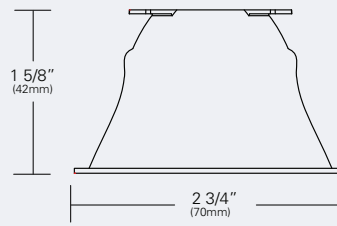
**LX-NRD-REF-CLR (NR)**  
**(70mm/10°)**

Field reducer. Proprietary field reducing baffle. Clear finish.



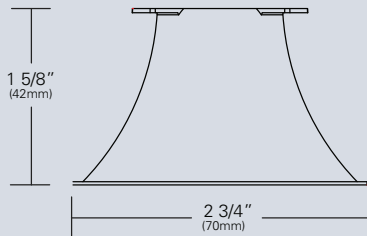
**LX-N20-REF-CLR (N2)**  
**(70mm/20°)**

Faceted reflectively coated metal optic. Tool-less twist and lock installation. Clear finish.



**LX-N40-REF-CLR (N4)**  
**(70mm/40°)**

Faceted reflectively coated metal optic. Tool-less twist and lock installation. Clear finish.



**LX-N60-REF-CLR (N6)**  
**(70mm/60°)**

Faceted reflectively coated metal optic. Tool-less twist and lock installation. Clear finish.

# LX2048 • PHOTOMETRIC DATA

**LED RATING: 07-98**

**N1- 50mm DIA Optic**

Beam Spread (minimum) **10°**  
Center Beam Candlepower **7338**  
CRI **98**

**NR- 70mm DIA Optic**

(FR: Field Reducer)  
Beam Spread (minimum) **10°**  
Center Beam Candlepower **5346**  
CRI **98**

**N2- 70mm DIA Optic**

Beam Spread (minimum) **20°**  
Center Beam Candlepower **1590**  
CRI **98**

**N4- 70mm DIA Optic**

Beam Spread (minimum) **40°**  
Center Beam Candlepower **948**  
CRI **98**

**N6- 70mm DIA Optic**

Beam Spread (minimum) **60°**  
Center Beam Candlepower **576**  
CRI **98**

**LED RATING: 13-83**

**N1- 70mm DIA Optic**

Beam Spread (minimum) **10°**  
Center Beam Candlepower **15899**  
CRI **83**

**NR- 70mm DIA Optic**

(FR: Field Reducer)  
Beam Spread (minimum) **10°**  
Center Beam Candlepower **11583**  
CRI **83**

**N2- 70mm DIA Optic**

Beam Spread (minimum) **20°**  
Center Beam Candlepower **3445**  
CRI **83**

**N4- 70mm DIA Optic**

Beam Spread (minimum) **40°**  
Center Beam Candlepower **2054**  
CRI **83**

**N6- 70mm DIA Optic**

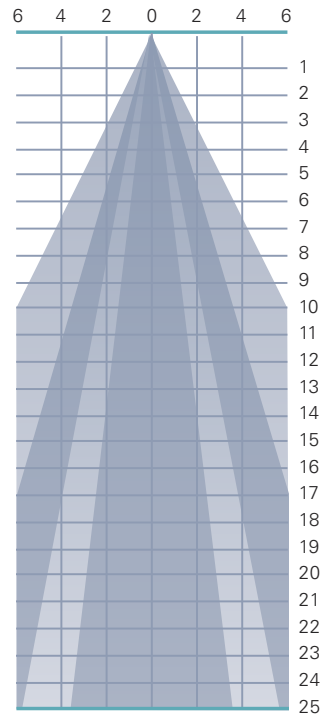
Beam Spread (minimum) **20°**  
Center Beam Candlepower **1248**  
CRI **83**

**LED RATING: 06-98**

All Max. Footcandles at 0° Beam Axis

	N6 (60°)	N4 (40°)	N2 (20°)	NR (10°) FR	N1 (10°)
	576	948	1590	5346	7338
	144	237	398	1337	1835
	64	105	177	594	815
	36	59	99	334	459
	23	38	64	214	294
	16	26	44	149	204
	12	19	32	109	150
	9	15	25	84	115
	7	12	20	66	91
	6	9	16	53	73
	5	8	13	44	61
	4	7	11	37	51
	3	6	9	32	43
	3	5	8	27	37
	3	4	7	24	33
	2	4	6	21	29
	2	3	6	18	25
	2	3	5	17	23
	2	3	4	15	20
	1	2	4	13	18
	1	2	4	12	17
	1	2	3	11	15
	1	2	3	10	14
	1	2	3	9	13
	1	2	3	9	12

All Distances in Feet



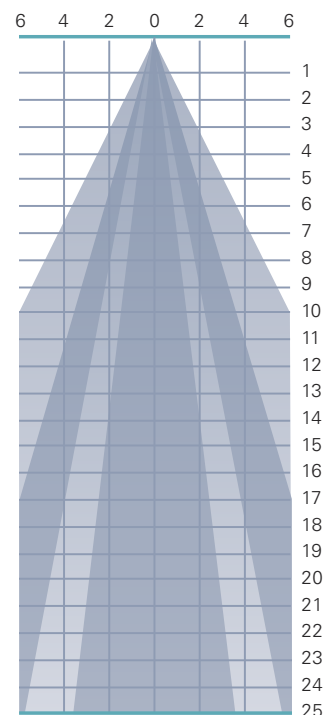
Photometric Data based on LED Rating: 07-98 (700 Lumens/98CRI/13watts)

**LED RATING: 13-83**

All Max. Footcandles at 0° Beam Axis

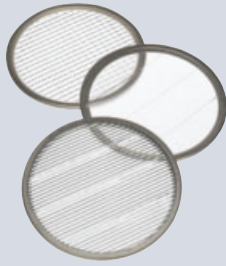
	N6 (60°)	N4 (40°)	N2 (20°)	NR (10°) FR	N1 (10°)
	1248	2054	3445	11583	15899
	514	514	861	2896	3975
	228	228	383	1287	1767
	128	128	215	724	994
	82	82	138	463	636
	57	57	96	322	442
	42	42	70	236	324
	32	32	54	181	248
	25	25	43	143	196
	21	21	34	116	159
	17	17	28	96	131
	14	14	24	80	110
	12	12	20	69	94
	10	10	18	59	81
	9	9	15	51	71
	8	8	13	45	62
	7	7	12	40	55
	6	6	11	36	49
	6	6	10	32	44
	5	5	9	29	40
	5	5	8	26	36
	4	4	7	24	33
	4	4	7	22	30
	4	4	6	20	28
	3	3	6	19	25

All Distances in Feet



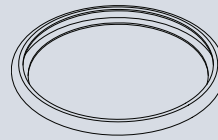
Photometric Data based on LED Rating: 13-83 (1300 Lumens/83CRI/22watts)

# LX2048 • ACCESSORIES



## SPREAD LENSES AND BEAM SOFTENER

No.	Description	% of Light Transmission
AA990	Spread Lens/Clear	83 (5°X 50°)
AA992	Spread Lens/Clear	85 (5°X 30°)
AA995	Spread Lens/Clear	83 (50°X 50°)
AA996	Spread Lens/Clear	86 (45°X 50°)
AA998	Beam Softener/Clear	80 (45°X 45°)



## BACKER RING AAB

Aluminum ring to hold gel when no other size AA accessories is being used. Black finish.



## 1 LIGHT BLOCKING SCREENS AA

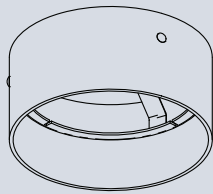
Stainless steel mesh screens used alone or in combinations will block from approximately 20% to 90% of the transmitted light without changing color temperature of the light

No.	% of Light Blocked
AA801S	20
AA802S	30
AA803S	40



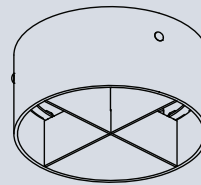
## LOUVER HEX AA

1/8" thick Hexcell black metal louver used for thin profile. Black finish.



## HOOD-EXT-LX44-NXB-X

Cylindrical metal hood controls spill light and glare. Does not include cross baffle. Specify finish.



## HOOD-EXT-LX44-WXB-X

Cylindrical metal hood controls spill light and glare. Includes cross baffle. Specify finish.

1. Figures vary based upon LED Module/Optic being used and relationship of screen(s) to LED Module/Optic and to each other.

# LX2048 • GELS

As the foremost innovator in accent lighting, LSI offers a complete range of pre-cut Gels to modify the spread and color of light for the LumeLEX LED Series.



## LumeLEX® SPREAD GELS

Size: AA (76 mm diameter)	Spread Gel
GEL-L1-AA	1° Spread Gel
GEL-L5-AA	5° Spread Gel
GEL-L10-AA	10° Spread Gel
GEL-L20-AA	20° Spread Gel
GEL-L30-AA	30° Spread Gel
GEL-L40-AA	40° Spread Gel
GEL-L60-AA	60° Spread Gel
GEL-L80-AA	80° Spread Gel
GEL-L30B5-AA	30° by 5° Spread Gel
GEL-L40B2-AA	40° by 0.2° Spread Gel
GEL-L60B1-AA	60° by 1° Spread Gel
GEL-L60B10-AA	60° by 10° Spread Gel
GEL-L75B45-AA	75° by 45° Spread Gel
GEL-L90B60-AA	90° by 60° Spread Gel
GEL-R101-AA	Beam Softener

## LumeLEX® COLOR GELS

Size: AA (76 mm diameter)	Gel Color	Size: AA (76 mm diameter)	Gel Color
GEL-R2-AA	Bastard Amber	GEL-R312-AA	Canary
GEL-R7-AA	Pale Yellow	GEL-R3204-AA	Half Blue
GEL-R12-AA	Straw	GEL-R331-AA	Shell Pink
GEL-R13-AA	Straw Tint	GEL-R383-AA	Sapphire Blue
GEL-R14-AA	Medium Straw	GEL-R397-AA	Pale Grey
GEL-R21-AA	Golden Amber	GEL-R2001-AA	Storaro Red
GEL-R25-AA	Orange Red	GEL-R2004-AA	Storaro Green
GEL-R26-AA	Light Red	GEL-R2009-AA	Storaro Violet
GEL-R27-AA	Medium Red	GEL-R3202-AA	Full Blue
GEL-R57-AA	Lavender	GEL-R3206-AA	Third Blue
GEL-R62-AA	Booster Blue	GEL-R3216-AA	Eighth Blue (Boosts 3200K to 3300K)
GEL-R71-AA	Sea Blue	GEL-R3318-AA	Tough 1/8 Minusgreen
GEL-R72-AA	Azure Blue	GEL-R3410-AA	Roscosun (1/8 CTO) (Reduces 5500K to 4900K)
GEL-R91-AA	Primary Green	GEL-R3441-AA	Full Straw (CTS)
GEL-R97-AA	Light Grey	GEL-R3443-AA	Quarter Straw (CTS)
GEL-R98-AA	Medium Grey	GEL-R4330-AA	CalColor 30 Cyan
GEL-R101-AA	Light Frost	GEL-R4415-AA	CalColor 15 Green
GEL-R104-AA	Tough Silk	GEL-R4490-AA	CalColor 90 Green
GEL-R119-AA	Light Hamburg Frost	GEL-R4860-AA	CalColor 60 Pink
GEL-R121-AA	Blue Diffusion	GEL-R4890-AA	CalColor 90 Pink
GEL-R305-AA	Rose Gold	GEL-R4930-AA	CalColor 30 Lavender

\* Backer Ring AAB required to hold gels when no other rimmed "AA" accessories are used.

# COLOR MEDIA

## COLOR FILTERS

As the foremost innovator in accent lighting, LSI offers a complete range of permanent fade-free glass color filters, which are available in nine stock diameters. All glass color filters are rimmed in a seamless aluminum ring and are slotted for heat expansion.



Size	Diameter	LSI Fixture Series	No.	Color	% of Light Transmission
AAA	2 3/8"	LumeLEX® 2020/2030/2031/2038, SSLCX16, SSL260, LumeLEX MAR-S	902	Medium Pink	36
			903	Deep Pink	37
			904	Flesh Pink	73
ZM	2 13/16"	LZ Zoom	906	Pale Lavender	14
			907	Surprise Pink	19
AA	3"	LumeLEX® 2024 (with LX2024-Holder or LX2024-Barndoor), LumeLEX® 2026, LumeLEX® 2044, LumeLEX 2048	908	Lilac	21
			910	Warm Red	10
			911	Strawberry	6
			912	Ruby	4
A	3 1/2"	LumeLEX® 2060, SSL230, SSLCX30, SSLGR30CL, SSLGR36	913	Magenta	1
			914	Light Amethyst	25
B	4 1/4"	LumeLEX® MAR-L	915	Medium Amethyst	16
			916	Deep Amethyst	4
			917	Olive	18
C	4 3/4"	LumeLEX® 2084, LumeLEX® 2088, SSL238, SSLCX36, SSLCX38, SSLGR38CL	918	Light Green	68
			920	Medium Green	25
			921	Deep Green	7
			922	Silver green	65
			923	Yellow Green	49
			924	Emerald Green	12
			925	Light Turquoise	68
			926	Medium Turquoise	40
			927	Deep Turquoise	17
			928	Light Blue	34
			930	Medium Blue	3
			932	Daylight	59
			933	Gene Moore Blue	18
			936	Grey	56
			937	Light Blue Green	17
			939	Light Amber	68
			940	Medium Amber	48
			941	Deep Amber	43
			942	Straw	78
			943	Gold	87
			944	Canary Yellow	84
			945	Lemon	81
			946	Pumpkin	32
			947	Tangerine	20
			948	Orange	23
			949	Pink Gold	54
			950	Bronze	48
			951	Brass	11
			952	Autumn Tan	11
			953	Leaf Brown	19
			954	Butter Pecan	3
			955	Toasted Almond	1

**Notes:**

1. Values given are approximate due to slight variations in glass color and thickness.



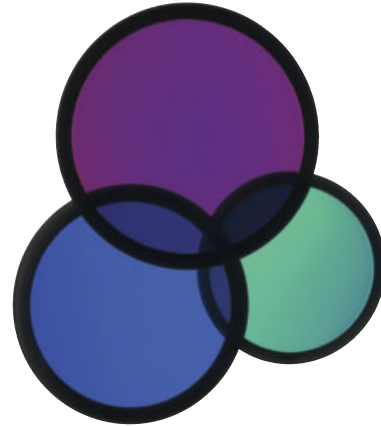
# COLOR MEDIA

## DICHROIC COLOR FILTERS

In addition to our complete line of glass color filters, LSI now offers dichroic glass color filters that achieve purer, more saturated, richer color by selective wavelength transmission. Since these filters reflect rather than absorb the unwanted color wavelengths, a higher intensity of colored light can be obtained with fewer or lower wattage fixtures. In addition, this selective transmission allows for very accurate color matching from filter to filter.

All standard LSI filter sizes are available in a wide palette of well chosen dichroic colors that can be used with all LSI fixtures that accept accessories.

LSI dichroic glass color filters have the added benefit of being rimmed for extra durability to allow for frequent usage without fear of breakage or edge chipping.



Size	Diameter	LSI Fixture Series	Technical Data	No.	Color	% of Light Transmission
AAA	2 3/8"	LumeLEX® 2020/2030/2031/2038, SSLCX16, SSL260, LumeLEX MAR-S	Dichroic color filters are created in a vacuum chamber by multi-layer vapor deposits of different minerals onto low expansion, chemically resistant Borosilicate glass.	2001	Light Pink	69
ZM	2 13/16"	LZ Zoom	Deposits are made in alternating layers of varying microscopic thickness which allow very narrow color wavelengths to be selectively transmitted and all other wavelengths to be reflected.	2002	Medium Pink	43
AA	3"	LumeLEX® 2024 (with LX2024-Holder or LX2024-Barndoor), LumeLEX® 2026, LumeLEX® 2044, LumeLEX 2048	LSI does not recommend using dichroic color filters with lamps or fixtures that have beam spreads greater than 40° because a secondary color aura is created by the wide angular transmitted wavelengths that are different than the desired color wavelength.	2003	Hot Pink	11
A	3 1/2"	LumeLEX® 2060, SSL230, SSLCX30, SSLGR30CL, SSLGR36	Since there is mainly transmission and reflection of the color wavelengths by the dichroic filter and very little absorption, the dichroic filter can be used with many high temperature lights that normally would not accept color filters.	2004	Pale Pink	55
B	4 1/4"	LumeLEX® MAR-L		2010	Deep Magenta	29
C	4 3/4"	LumeLEX® 2084, LumeLEX® 2088, SSL238, SSLCX36, SSLCX38, SSLGR38CL		2011	Lavender	24
				2012	Vivid Magenta	31
				2013	Lavender Accent	48
				2014	Lilac	37
				2015	Purple Fusion	12
				2020	Sky Blue	39
				2021	Sea Blue	39
				2022	Cyan	33
				2023	Light Blue Green	30
				2024	Primary Blue	24
				2025	Medium Red Blue	15
				2026	Deep Purple	16
				2027	Peacock Blue	53
				2028	Mediterranean Blue	20
				2029	Boost Blue	51
				2040	Light Yellow Green	64
				2041	Fern Green	47
				2042	Turquoise	35
				2043	Primary Green	31
				2044	Industrial Green	64
				2050	Yellow	80
				2051	Amber	71
				2052	Amber Blush	38
				2053	Bastard Amber	71
				2054	Goldenrod	63
				2055	Bright Straw	56
				2060	Medium Orange	51
				2061	Orange	44
				2070	Flame Red	27
				2071	Primary Red	25