


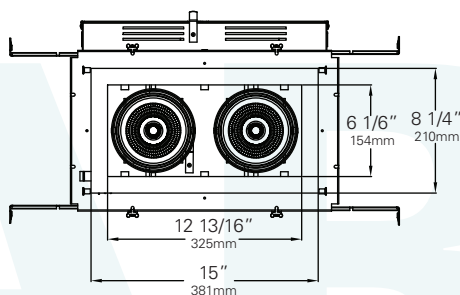
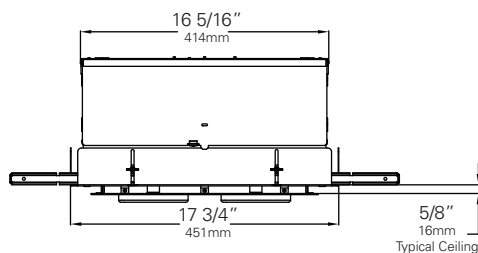
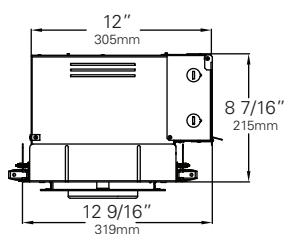
MAR-L2 • 120/277V • LED • XICATO



The LumeLEX MAR2 Series features the highly efficient Xicato XTM Modules and a variety of optics and accessory options for unprecedented flexibility.

- Designed for the Xicato™ XTM LED module up to 20 Watts
- Extremely tight color consistency (less than 2 MacAdam Ellipses)
- System efficiency up to 100 lumens/watt
- Backed by Xicato's Five Year Color Consistency and Lumen Maintenance Warranty
- Tested to LM79 and LM80 Protocols
- 50,000 hour life to 70% lumen output, L₇₀ at 95°F max ambient
- Integral electronic driver compatible with reverse phase (ELV compatible) dimmers down to 5%
- Choice of 13°, 24° or 43° field changeable optic
- 25° Aiming
- Choice of LED modules with various lumen outputs
- Choice of color temperatures
- Color Rendering Index (CRI) of either 98 (high) or 83+ (standard)
- No UV or IR emissions; no mercury or lead
- All LumeLEX modules are field replaceable
- Can be ordered for 120V or 277V
- Sturdy steel housing with spun aluminum lamp holders
- Accepts up to three size-B LSI filters and accessories
- Thermally protected and approved for all Non-IC ceiling types, including air handling plenums
- Unique spring-loaded clamping system facilitates installation in plaster, sheetrock or acoustic tiles
- Supplied with LED driver
- Flange finishes: LSI Black, White and Silver
- Fixture weight: 15 LB
- 

SPECIFICATIONS



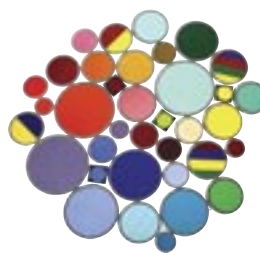
MAR-L2 • 120/277V • LED • XICATO**ORDERING INFORMATION**

1. Choose the product code
(L2) for Large 2-head fixture
2. Choose the numeric code to designate the desired LED Rating
Lumens/CRI/Wattage
(13-98) for 1300/98/18
(20-83) for 2000/83/20
(21-98) for 2100/98/24
(27-83) for 2700/83/24
3. Choose the numeric code to designate the desired
Color Temperature
(27) for 2700K **(30)** for 3000K
(35) for 3500K **(40)** for 4000K
4. Use the following alpha-numeric codes to designate the **Optic:**
(M13) for 13° **(M24)** for 24° **(M43)** for 43°
5. Choose the letter code for **Dimming Type:**
(TE) Trailing Edge (ELV Reverse Phase) (5%)
(10) 0-10V (10%)
(L3) Lutron Ecosystem
6. Choose the desired **Voltage:**
(120) for 120V **(277)** for 277V
7. Choose a **Finish** for your fixture:
Black **(B)** White **(W)** Silver **(S)** Trimless **(T)**

Example:

LX**MAR-L2** - **13-98** - **27** - **M24** - **TE** - **120** - **W**
FIXTURE LED RATING COLOR TEMP OPTIC DIMMING VOLTAGE FINISH

8. Don't forget your Accessories!

ACCESSORIES**Glass Color Filters B**

Selection of 95 permanent rimmed dichroic and rimmed and slotted standard colors.

- **Color and Spread Gels B**
- **Backer Ring B**

Other accessories:

- **Spread Lenses B990, B992, B995, B996**
- **Beam Softener B998**
- **Louver Hex B**
- **Light Blocking Screens B801S, B802S, B803S**

MAR-L2 • PERFORMANCE

The performance characteristics of the LumeLEX MAR Series can be customized based on the LED module and the optic (reflector) selected.

Each available LED module is defined by four characteristics – the color rendering index (CRI), the correlated color temperature (CCT), the power that it uses (watts), and its “available lumens.” Note that available lumens is a theoretical value that represents the light output of the module on its own – no fixture or optic attached.

In the LSI part number, the LED module is specified with a number that immediately follows the product series number.

For example, in the part number LXMAR-L2-13-98-27-M24-TE-120-W, the “13-98-27” represents an LED module with an output of 1300 lumens, a CRI of 98, a power usage of 18 watts and a color temperature of 2700K.

Additional parameters, such as Center Beam Candle Power (CBCP), Delivered Lumens, and Efficiency (Lumens per Watt) are all shown in a table that is organized by LED module and optic combination.

| CBCP = Center Beam Candle Power | | | |
|---------------------------------|-------------------|------|------|
| LED Module | Optic (Reflector) | | |
| Lumens/CRI/Wattage | M13 | M24 | M43 |
| 1300/98/18 | 7995 | 2847 | 1703 |
| 2000/83/20 | 12300 | 4600 | 2613 |
| 2100/98/24 | 12915 | 4599 | 2751 |
| 2700/83/24 | 18449 | 6579 | 3920 |

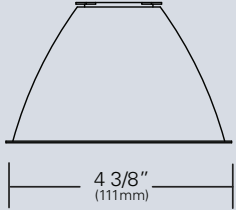
| Delivered Lumens | | | |
|--------------------|-------------------|------|------|
| LED Module | Optic (Reflector) | | |
| Lumens/CRI/Wattage | M13 | M24 | M43 |
| 1300/98/18 | 1027 | 1040 | 1027 |
| 2000/83/20 | 1580 | 1600 | 1580 |
| 2100/98/24 | 1659 | 1680 | 1659 |
| 2700/83/24 | 2133 | 2160 | 2133 |

| Efficiency = Lumens Per Watt | | | |
|------------------------------|-------------------|-----|-----|
| LED Module | Optic (Reflector) | | |
| Lumens/CRI/Wattage | M13 | M24 | M43 |
| 1300/98/18 | 57 | 58 | 57 |
| 2000/83/20 | 79 | 80 | 79 |
| 2100/98/24 | 69 | 70 | 69 |
| 2700/83/24 | 89 | 90 | 89 |

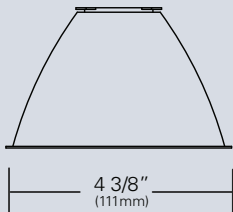
Absolute range of values are +/- 10% of typical value, and are for all color temperatures

| LED Module | 1300/98/18 | 2000/83/20 | 2100/98/24 | 2700/83/24 |
|---|------------|------------|------------|------------|
| Lumens/CRI/Wattage SKU Code | 13-98 | 20-83 | 21-98 | 15-83 |
| Nominal Fixture Power (+/- 20%), Watts | 18 | 20 | 24 | 24 |
| Maximum Inrush Current Amps | 10 | 10 | 10 | 10 |
| Minimum Power Factor | 0.92 | 0.92 | 0.92 | 0.92 |

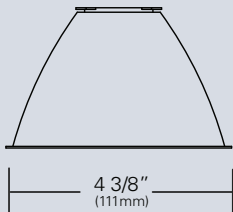
Inrush current is instantaneous current drawn by the LED only when fixture is initially powered on or instantaneously changed from full dim to full bright. For more details see Dimming Application Sheet, IS-0119.

MAR-L2 • OPTICS**M13 REFLECTOR
(111mm/13°)**

Computer designed polycarbonate specular optic. Tool-less, twist and lock installation.

**M24 REFLECTOR
(111mm/24°)**

Computer designed polycarbonate specular optic. Tool-less, twist and lock installation.

**M43 REFLECTOR
(111mm/43°)**

Computer designed polycarbonate specular optic. Tool-less, twist and lock installation.

MAR-L2 • PHOTOMETRIC DATA

LED RATING: 20-83

M13 Optic

Beam Spread (minimum) **13°**
Center Beam Candlepower **12300**
CRI **83**

M24 Optic

Beam Spread (minimum) **24°**
Center Beam Candlepower **4600**
CRI **83**

M43 Optic

Beam Spread (minimum) **43°**
Center Beam Candlepower **2613**
CRI **83**

LED RATING: 27-83

M13 Optic

Beam Spread (minimum) **13°**
Center Beam Candlepower **18449**
CRI **83**

M24 Optic

Beam Spread (minimum) **24°**
Center Beam Candlepower **6579**
CRI **83**

M43 Optic

Beam Spread (minimum) **43°**
Center Beam Candlepower **3920**
CRI **83**

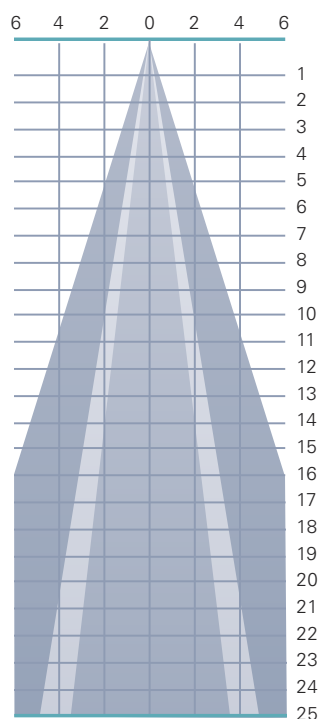
LED RATING: 20-83

M43 (43°) **M24 (24°)** **M13 (13°)**

All Max. Footcandles at 0° Beam Axis

| | | |
|------|------|-------|
| 2613 | 4600 | 12300 |
| 653 | 1150 | 3075 |
| 290 | 511 | 1367 |
| 163 | 288 | 769 |
| 105 | 184 | 492 |
| 73 | 128 | 342 |
| 53 | 94 | 251 |
| 41 | 72 | 192 |
| 32 | 57 | 152 |
| 26 | 46 | 123 |
| 22 | 38 | 102 |
| 18 | 32 | 85 |
| 15 | 27 | 73 |
| 13 | 23 | 63 |
| 12 | 20 | 55 |
| 10 | 18 | 48 |
| 9 | 16 | 43 |
| 8 | 14 | 38 |
| 7 | 13 | 34 |
| 7 | 12 | 31 |
| 6 | 10 | 28 |
| 5 | 10 | 25 |
| 5 | 9 | 23 |
| 5 | 8 | 21 |
| 4 | 7 | 20 |

All Distances in Feet



Photometric Data based on LED Rating: 20-83 (2000 Lumens/83CRI/20watts)

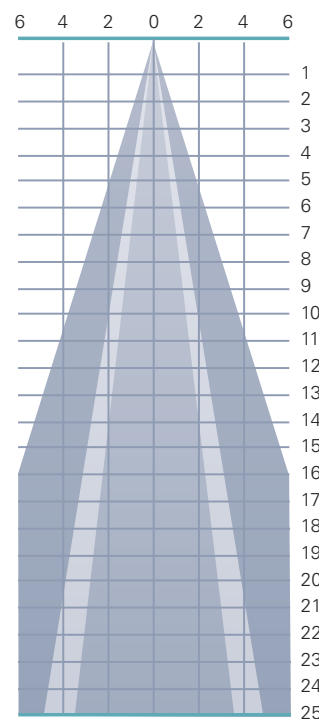
LED RATING: 27-83

M43 (43°) **M24 (24°)** **M13 (13°)**

All Max. Footcandles at 0° Beam Axis

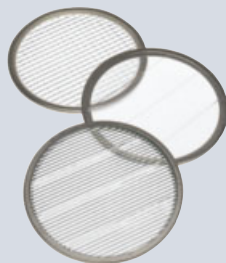
| | | |
|------|------|-------|
| 3920 | 6579 | 18449 |
| 980 | 1645 | 4612 |
| 436 | 731 | 2050 |
| 245 | 411 | 1153 |
| 157 | 263 | 738 |
| 109 | 183 | 512 |
| 80 | 134 | 377 |
| 61 | 103 | 288 |
| 48 | 81 | 228 |
| 39 | 66 | 184 |
| 32 | 54 | 152 |
| 27 | 46 | 128 |
| 23 | 39 | 109 |
| 20 | 34 | 94 |
| 17 | 29 | 82 |
| 15 | 26 | 72 |
| 14 | 23 | 64 |
| 12 | 20 | 57 |
| 11 | 18 | 51 |
| 10 | 16 | 46 |
| 9 | 15 | 42 |
| 8 | 14 | 38 |
| 7 | 12 | 35 |
| 7 | 11 | 32 |
| 6 | 11 | 30 |

All Distances in Feet



Photometric Data based on LED Rating: 10-98 (2700 Lumens/83CRI/24watts)

MAR-L2 • ACCESSORIES

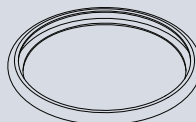


SPREAD LENSES AND BEAM SOFTENER

| No. | Description | % of Light Transmission |
|-----|---------------------|-------------------------|
| 990 | Spread Lens/Clear | 83 (5°X 50°) |
| 992 | Spread Lens/Clear | 85 (5°X 30°) |
| 995 | Spread Lens/Clear | 83 (50°X 50°) |
| 996 | Spread Lens/Clear | 86 (45°X 50°) |
| 998 | Beam Softener/Clear | 80 (45°X 45°) |

BACKER RING B

Stainless steel ring to hold gel when no other size Baccessories are being used.



LOUVER HEX B

1/8" thick Hexcell black metal louver used for thin profile.



¹LIGHT BLOCKING SCREENS B

Stainless steel mesh screens used alone or in combinations will block from approximately 20% to 90% of the transmitted light without changing color temperature of the light.



| No. | % of Light Blocked |
|-------|--------------------|
| B801S | 20 |
| B802S | 30 |
| B803S | 40 |

1. Figures vary based upon LED Module/Optic being used and relationship of screen(s) to LED Module/Optic and to each other.

MAR-L2 • GELS

As the foremost innovator in accent lighting, LSI offers a complete range of pre-cut Gels to modify the spread and color of light for the LumeLEX LED Series.



LumeLEX® SPREAD GELS

| Size: B (4 1/4" diameter) | Spread Gel |
|------------------------------|------------------------|
| GELL1-B | 1° Spread Gel |
| GELL5-B | 5° Spread Gel |
| GELL10-B | 10° Spread Gel |
| GELL20-B | 20° Spread Gel |
| GELL30-B | 30° Spread Gel |
| GELL40-B | 40° Spread Gel |
| GELL60-B | 60° Spread Gel |
| GELL80-B | 80° Spread Gel |
| GELL30B5-B | 30° by 5° Spread Gel |
| GELL40B2-B | 40° by 0.2° Spread Gel |
| GELL60B1-B | 60° by 1° Spread Gel |
| GELL60B10-B | 60° by 10° Spread Gel |
| GELL75B45-B | 5° by 45° Spread Gel |
| GELL90B60-B | 90° by 60° Spread Gel |
| GELR101-B | Beam Softener |

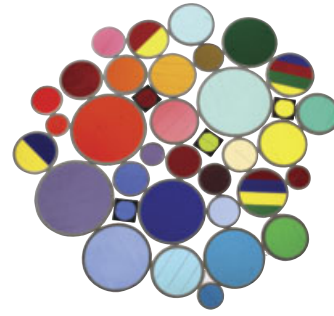
LumeLEX® COLOR GELS

| Size: B (4 1/4" diameter) | Gel Color | Size: B (4 1/4" diameter) | Gel Color |
|------------------------------|-------------------|------------------------------|---|
| GELR2-B | Bastard Amber | GELR312-B | Canary |
| GELR7-B | Pale Yellow | GELR3204-B | Half Blue |
| GELR12-B | Straw | GELR331-B | Shell Pink |
| GELR13-B | Straw Tint | GELR383-B | Sapphire Blue |
| GELR14-B | Medium Straw | GELR397-B | Pale Grey |
| GELR21-B | Golden Amber | GELR2001-B | Storaro Red |
| GELR25-B | Orange Red | GELR2004-B | Storaro Green |
| GELR26-B | Light Red | GELR2009-B | Storaro Violet |
| GELR27-B | Medium Red | GELR3202-B | Full Blue |
| GELR57-B | Lavender | GELR3206-B | Third Blue |
| GELR62-B | Booster Blue | GELR3216-B | Eighth Blue (Boosts 3200K to 3300K) |
| GELR71-B | Sea Blue | GELR3318-B | Tough 1/8 Minusgreen |
| GELR72-B | Azure Blue | GELR3410-B | Roscosun (1/8 CTO) (Reduces 5500K to 4900K) |
| GELR91-B | Primary Green | GELR3441-B | Full Straw (CTS) |
| GELR97-B | Light Grey | GELR3443-B | Quarter Straw (CTS) |
| GELR98-B | Medium Grey | GELR4330-B | CalColor 30 Cyan |
| GELR101-B | Light Frost | GELR4415-B | CalColor 15 Green |
| GELR104-B | Tough Silk | GELR4490-B | CalColor 90 Green |
| GELR119-B | Lt. Hamburg Frost | GELR4860-B | CalColor 60 Pink |
| GELR121-B | Blue Diffusion | GELR4890-B | CalColor 90 Pink |
| GELR305-B | Rose Gold | GELR4930-B | CalColor 30 Lavender |

COLOR MEDIA

COLOR FILTERS

As the foremost innovator in accent lighting, LSI offers a complete range of permanent fade-free glass color filters, which are available in nine stock diameters. All glass color filters are rimmed in a seamless aluminum ring and are slotted for heat expansion.



| Size | Diameter | LSI Fixture Series | No. | Color | % of Light Transmission |
|------|----------|--|-----|------------------|-------------------------|
| AAA | 2 3/8" | LumeLEX® 2020/2030/2031/2038, SSLCX16, SSL260, LumeLEX MAR-S | 902 | Medium Pink | 36 |
| | | | 903 | Deep Pink | 37 |
| | | | 904 | Flesh Pink | 73 |
| ZM | 2 13/16" | LZ Zoom | 906 | Pale Lavender | 14 |
| | | | 907 | Surprise Pink | 19 |
| AA | 3" | LumeLEX® 2024 (with LX2024-Holder or LX2024-Barndoor), LumeLEX® 2044, LumeLEX 2048 | 908 | Lilac | 21 |
| | | | 910 | Warm Red | 10 |
| | | | 911 | Strawberry | 6 |
| | | | 912 | Ruby | 4 |
| A | 3 1/2" | LumeLEX® 2060, SSL230, SSLCX30, SSLGR30CL, SSLGR36 | 913 | Magenta | 1 |
| | | | 914 | Light Amethyst | 25 |
| B | 4 1/4" | LumeLEX® MAR-L | 915 | Medium Amethyst | 16 |
| | | | 916 | Deep Amethyst | 4 |
| | | | 917 | Olive | 18 |
| C | 4 3/4" | LumeLEX® 2084, LumeLEX® 2088, SSL238, SSLCX36, SSLCX38, SSLGR38CL | 918 | Light Green | 68 |
| | | | 920 | Medium Green | 25 |
| | | | 921 | Deep Green | 7 |
| | | | 922 | Silver green | 65 |
| | | | 923 | Yellow Green | 49 |
| | | | 924 | Emerald Green | 12 |
| | | | 925 | Light Turquoise | 68 |
| | | | 926 | Medium Turquoise | 40 |
| | | | 927 | Deep Turquoise | 17 |
| | | | 928 | Light Blue | 34 |
| | | | 930 | Medium Blue | 3 |
| | | | 932 | Daylight | 59 |
| | | | 933 | Gene Moore Blue | 18 |
| | | | 936 | Grey | 56 |
| | | | 937 | Light Blue Green | 17 |
| | | | 939 | Light Amber | 68 |
| | | | 940 | Medium Amber | 48 |
| | | | 941 | Deep Amber | 43 |
| | | | 942 | Straw | 78 |
| | | | 943 | Gold | 87 |
| | | | 944 | Canary Yellow | 84 |
| | | | 945 | Lemon | 81 |
| | | | 946 | Pumpkin | 32 |
| | | | 947 | Tangerine | 20 |
| | | | 948 | Orange | 23 |
| | | | 949 | Pink Gold | 54 |
| | | | 950 | Bronze | 48 |
| | | | 951 | Brass | 11 |
| | | | 952 | Autumn Tan | 11 |
| | | | 953 | Leaf Brown | 19 |
| | | | 954 | Butter Pecan | 3 |
| | | | 955 | Toasted Almond | 1 |

Notes:

1. Values given are approximate due to slight variations in glass color and thickness.

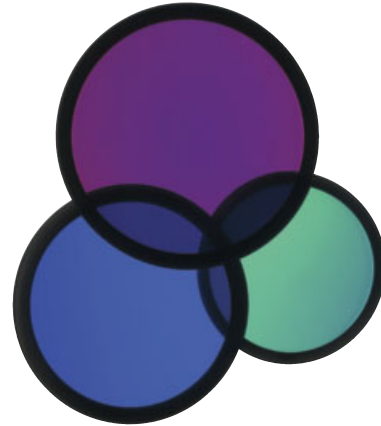
COLOR MEDIA

DICHROIC COLOR FILTERS

In addition to our complete line of glass color filters, LSI now offers dichroic glass color filters that achieve purer, more saturated, richer color by selective wavelength transmission. Since these filters reflect rather than absorb the unwanted color wavelengths, a higher intensity of colored light can be obtained with fewer or lower wattage fixtures. In addition, this selective transmission allows for very accurate color matching from filter to filter.

All standard LSI filter sizes are available in a wide palette of well chosen dichroic colors that can be used with all LSI fixtures that accept accessories.

LSI dichroic glass color filters have the added benefit of being rimmed for extra durability to allow for frequent usage without fear of breakage or edge chipping.



| Size | Diameter | LSI Fixture Series | Technical Data | No. | Color | % of Light Transmission |
|------|----------|--|--|------|--------------------|-------------------------|
| AAA | 2 3/8" | LumeLEX® 2020/2030/2031/2038, SSLCX16, SSL260, LumeLEX MAR-S | Dichroic color filters are created in a vacuum chamber by multi-layer vapor deposits of different minerals onto low expansion, chemically resistant Borosilicate glass. | 2001 | Light Pink | 69 |
| ZM | 2 13/16" | LZ Zoom | Deposits are made in alternating layers of varying microscopic thickness which allow very narrow color wavelengths to be selectively transmitted and all other wavelengths to be reflected. | 2002 | Medium Pink | 43 |
| AA | 3" | LumeLEX® 2024 (with LX2024-Holder or LX2024-Barndoor), LumeLEX® 2044, LumeLEX 2048 | LSI does not recommend using dichroic color filters with lamps or fixtures that have beam spreads greater than 40° because a secondary color aura is created by the wide angular transmitted wavelengths that are different than the desired color wavelength. | 2003 | Hot Pink | 11 |
| A | 3 1/2" | LumeLEX® 2060, SSL230, SSLCX30, SSLGR30CL, SSLGR36 | Since there is mainly transmission and reflection of the color wavelengths by the dichroic filter and very little absorption, the dichroic filter can be used with many high temperature lights that normally would not accept color filters. | 2004 | Pale Pink | 55 |
| B | 4 1/4" | LumeLEX® MAR-L | | 2010 | Deep Magenta | 29 |
| C | 4 3/4" | LumeLEX® 2084, LumeLEX® 2088, SSL238, SSLCX36, SSLCX38, SSLGR38CL | | 2011 | Lavender | 24 |
| | | | | 2012 | Vivid Magenta | 31 |
| | | | | 2013 | Lavender Accent | 48 |
| | | | | 2014 | Lilac | 37 |
| | | | | 2015 | Purple Fusion | 12 |
| | | | | 2020 | Sky Blue | 39 |
| | | | | 2021 | Sea Blue | 39 |
| | | | | 2022 | Cyan | 33 |
| | | | | 2023 | Light Blue Green | 30 |
| | | | | 2024 | Primary Blue | 24 |
| | | | | 2025 | Medium Red Blue | 15 |
| | | | | 2026 | Deep Purple | 16 |
| | | | | 2027 | Peacock Blue | 53 |
| | | | | 2028 | Mediterranean Blue | 20 |
| | | | | 2029 | Boost Blue | 51 |
| | | | | 2040 | Light Yellow Green | 64 |
| | | | | 2041 | Fern Green | 47 |
| | | | | 2042 | Turquoise | 35 |
| | | | | 2043 | Primary Green | 31 |
| | | | | 2044 | Industrial Green | 64 |
| | | | | 2050 | Yellow | 80 |
| | | | | 2051 | Amber | 71 |
| | | | | 2052 | Amber Blush | 38 |
| | | | | 2053 | Bastard Amber | 71 |
| | | | | 2054 | Goldenrod | 63 |
| | | | | 2055 | Bright Straw | 56 |
| | | | | 2060 | Medium Orange | 51 |
| | | | | 2061 | Orange | 44 |
| | | | | 2070 | Flame Red | 27 |
| | | | | 2071 | Primary Red | 25 |