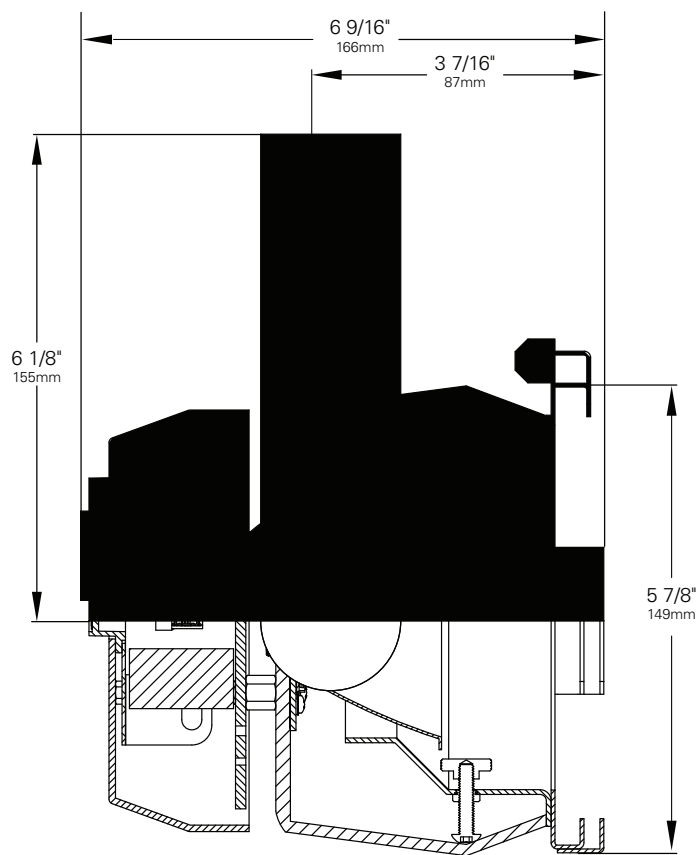


UV8 • 100V/120V/240V • LED**DRIVER TYPE (Electronic)**

Input Power (A) - 100V	0.15
Input Power (A) - 120V	0.13
Input Power (A) - 240V	0.07
Wattage	15
Power Factor - 115V	.95

LED ORDERING INFORMATION**Base Fixture Model**

UV8-N01 = UV A (1) LED Array

LED Rating (mW/Wavelength/Wattage)

26-36 = 2550/365/15

Installed Optic (Choose 1)

- 8 = 82mm/8°
- 15 = 70mm/15°
- 25 = 82mm/25°
- 40 = 82mm/40°
- 60 = 70mm/60°

Extra Optic (Choose 1)

- 8 = 82mm/8°
- 15 = 70mm/15°
- 25 = 82mm/25°
- 40 = 82mm/40°
- 60 = 70mm/60°

Fitting/Controls (Dimming)

- 2A-DMX = Unistrut Mount & DMX (1%)
- 2A-ELV = Unistrut Mount & ELV (5%)
- 2B-DMX = Base Plate Mount & DMX (1%)
- 2B-ELV = Base Plate Mount & ELV (5%)
- 3A-DMX = Mega Clamp Fitting & DMX (1%)
- 3A-ELV = Mega Clamp Fitting & ELV (5%)

Voltage

100 = 100V 120 = 120V 240 = 240V

Finish

B = Black

Accessory (Optional)

- BD = Barndoor
- HD = Hood

Starter Harness Plug

- P1 = NEMA 5-15P (125V Max)
- P2 = NEMA L5-15P (125V Max)
- P3 = NEMA L6-20P (250V Max)
- P4 = NEMA L5-20P (125V Max)
- P5 = 10 FT, No Plug (250V Max)

Example Part Number:

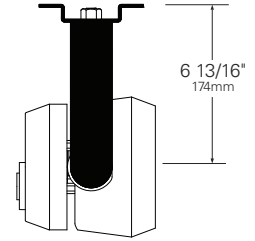
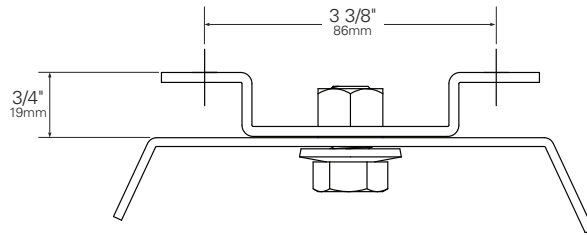
UV8-N01 **26-36** **815** - **3A-DMX** **120B** - **BDHD** - **P1**

FIXTURE MODEL LED RATING OPTIC FITTING/DIMMING VOLTAGE/FINISH ACCESSORY PLUG

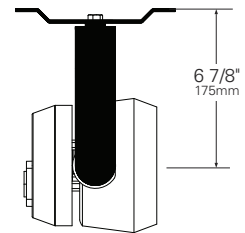
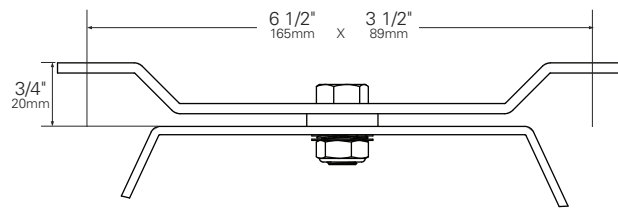
UV8 • MOUNTING OPTIONS

FITTING	SIDE VIEW	PROFILE VIEW
---------	-----------	--------------

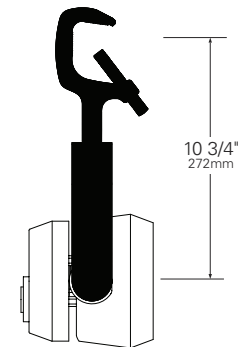
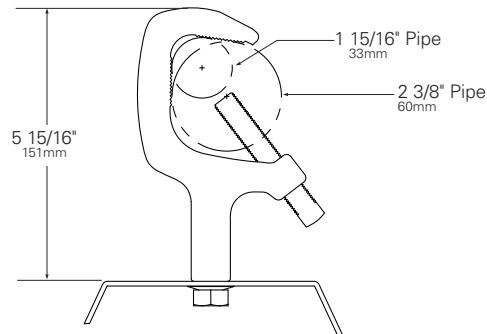
2A Unistrut Fitting



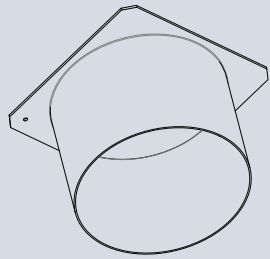
2B Base Plate Fitting



3A Mega Clamp Fitting

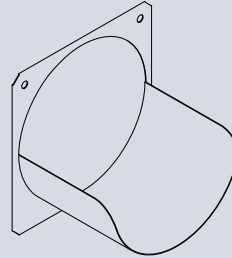


UV8 • ACCESSORIES



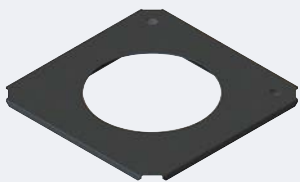
HOOD UV8

3 1/4 inch deep hood.
Controls spill light and glare.
Black finish.



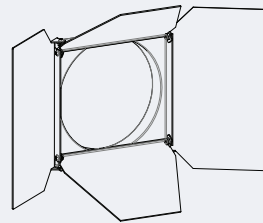
HALF HOOD UV8

3 1/4 inch deep half hood.
Controls spill light and glare.
Black finish.



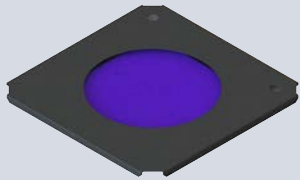
DIRT SHIELD UV8

Clear glass in sheet metal
frame to prevent dirt and debris
from going inside
the fixture.



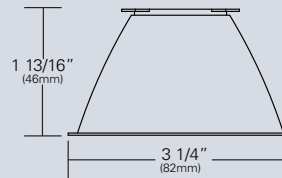
BARNDOOR UV8

4-way individually adjustable
blades for control of light
beam. Black finish.



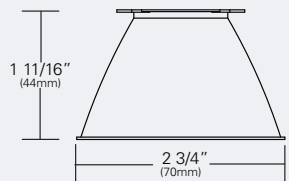
UV LENS UV8

Narrow band pass filter blocks
all visible light while allowing
UV transmission.



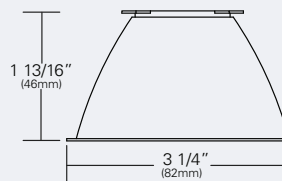
UV8-08-REF-CLR (82MM/8°)

Faceted aluminum optic.
Tool-less, twist and lock
installation. Aluminized finish.



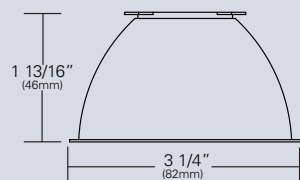
UV8-15-REF-CLR (70MM/15°)

Faceted aluminum optic.
Tool-less, twist and lock
installation. Aluminized finish.



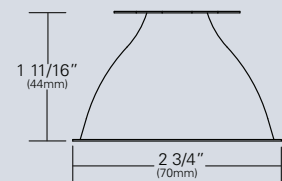
UV8-25-REF-CLR (82MM/25°)

Faceted aluminum optic.
Tool-less, twist and lock
installation. Aluminized finish.



UV8-40-REF-CLR (82MM/40°)

Faceted aluminum optic.
Tool-less, twist and lock
installation. Aluminized finish.



UV8-60-REF-CLR (70MM/60°)

Faceted aluminum optic.
Tool-less, twist and lock
installation. Aluminized finish.